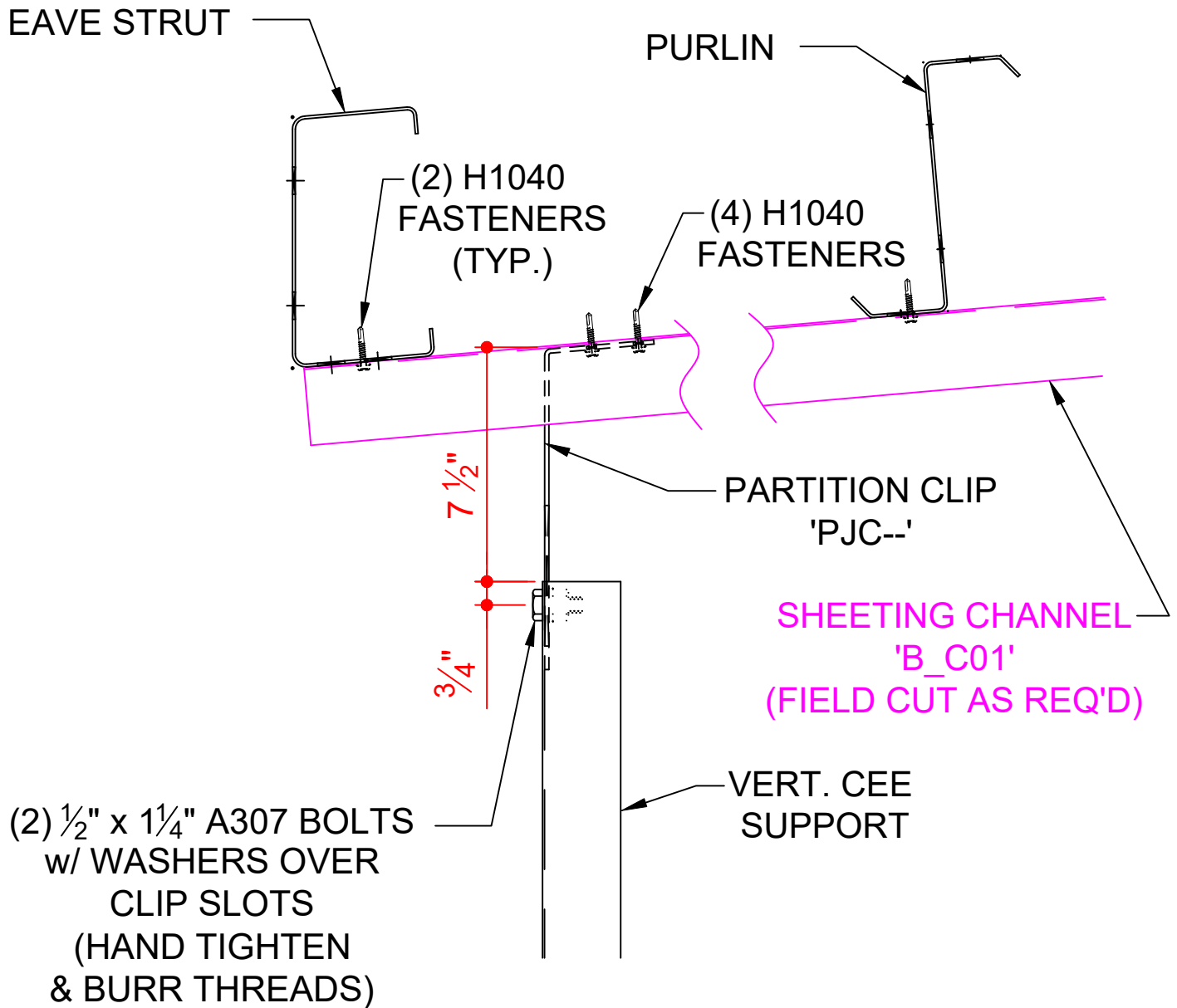
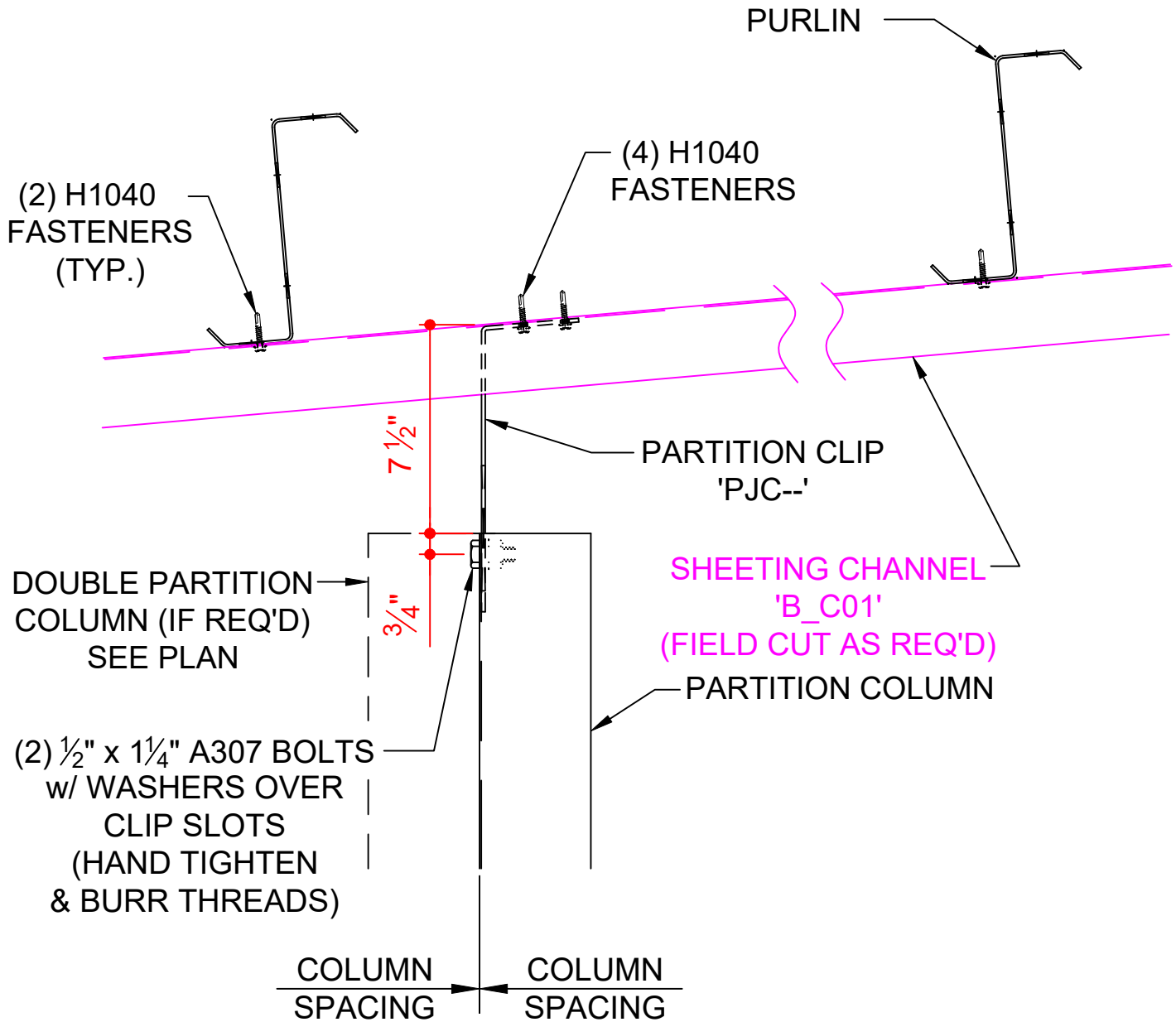


IH0011 - Vert. Cee Top
IH0013 - Part. Col. Top
IH0022 - Girt to Vert Cee
IH0025 - Part Girt to Cee Col
IH1025 - Part Girt to Double Cee Col
IH0041 - Long. Cee to Int Rafter
IH0043 - Long Cee to By-Frame EW Rafter
IH1043 - Long Cee to Flush EW Rafter
IH0045 - Part. Col. to Long. Support Cee
IH0061 - Recessed Girt to Girt Same Elev.
IH0063 - Flush Girt to By-Frame RF
IH0163 - Flush Girt to Flush RF
IH0064 - Inset Girt to By-Frame RF
IH0264 - Inset Girt to Inset RF
IH0631 - Trans. Part Pnl Cap
IH1631 - Trans. Part Pnl Cap > 2:12
IH0633 - Trans Part Pnl Cap Below Purlin
IH0641 - Long. Part Pnl Cap
IH0643 - Long Part. Pnl. Cap Below Purlin
IH0651 - Trans Flush Part Cap < 1 1/2:12
IH1651 - Trans Flush Part Cap > 1 1/2:12
IH0653 - Trans Inset Part Cap < 1 1/2:12
IH1653 - Trans Inset Part Cap > 1 1/2:12
IH0656 - Trans By-Frm Part Cap < 1 1/2:12
IH1656 - Trans By-Frm Part Cap > 1 1/2:12
IH0681 - Beam Closure Recessed SW
IH0686 - Part Trim @ Rafter Penetrations
IH0689 - Part Trim @ Rafter Penetrations
IH0111 - Inside Cnr KW
IH0211 - Inside Cnr KR
IH0311 - Inside Cnr - KRP



IH0011K

VERTICAL CEE SUPPORT TOP CONNECTION



IH0013K

PARTITION COLUMN TOP CONNECTION



KIRBY
BUILDING
SYSTEMS

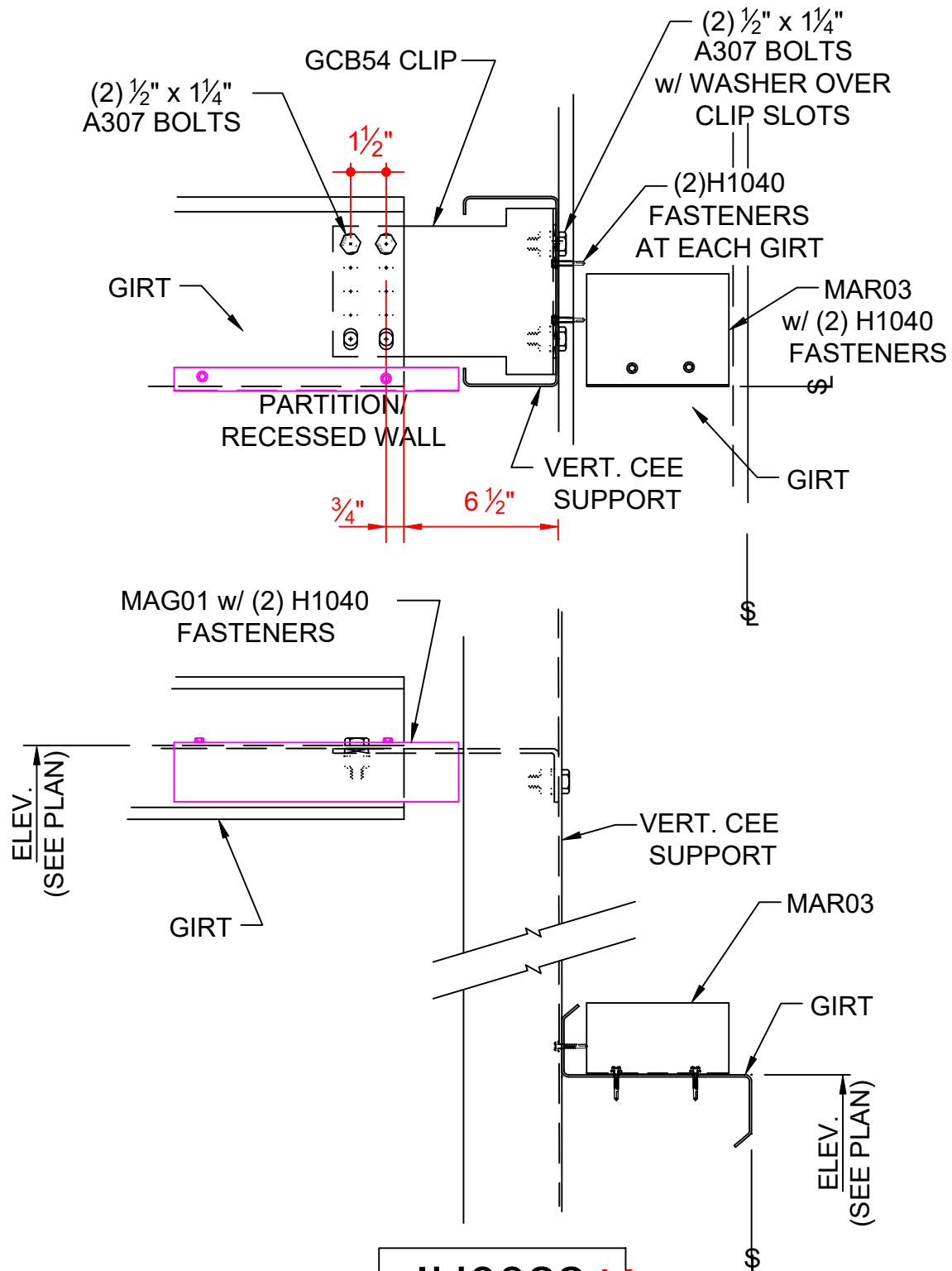
A NUCCA COMPANY

BETTER SOLUTIONS. BETTER BUILDINGS.

PREPARED BY: BKC

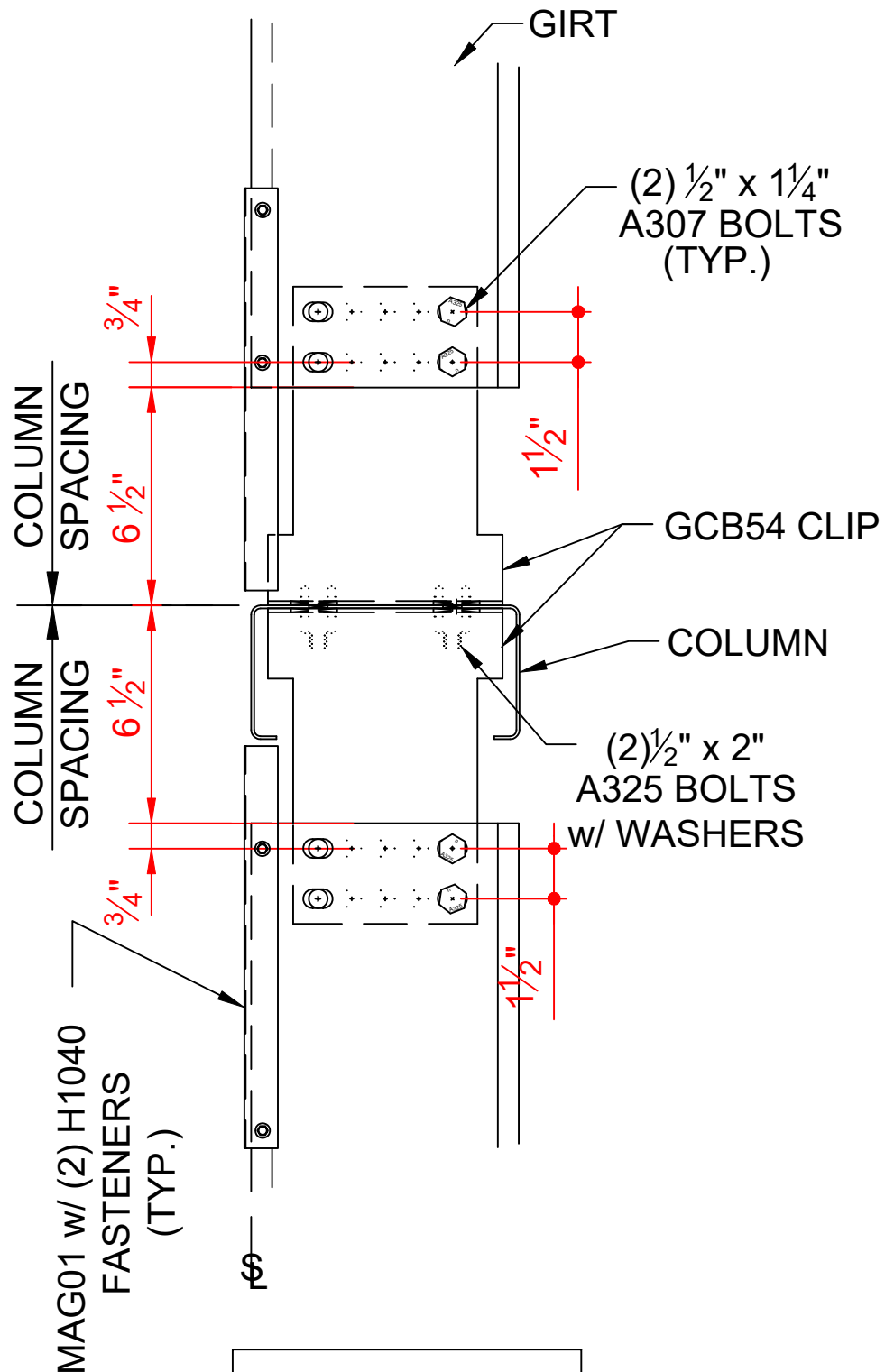
DATE: 4-23-20

IH0013

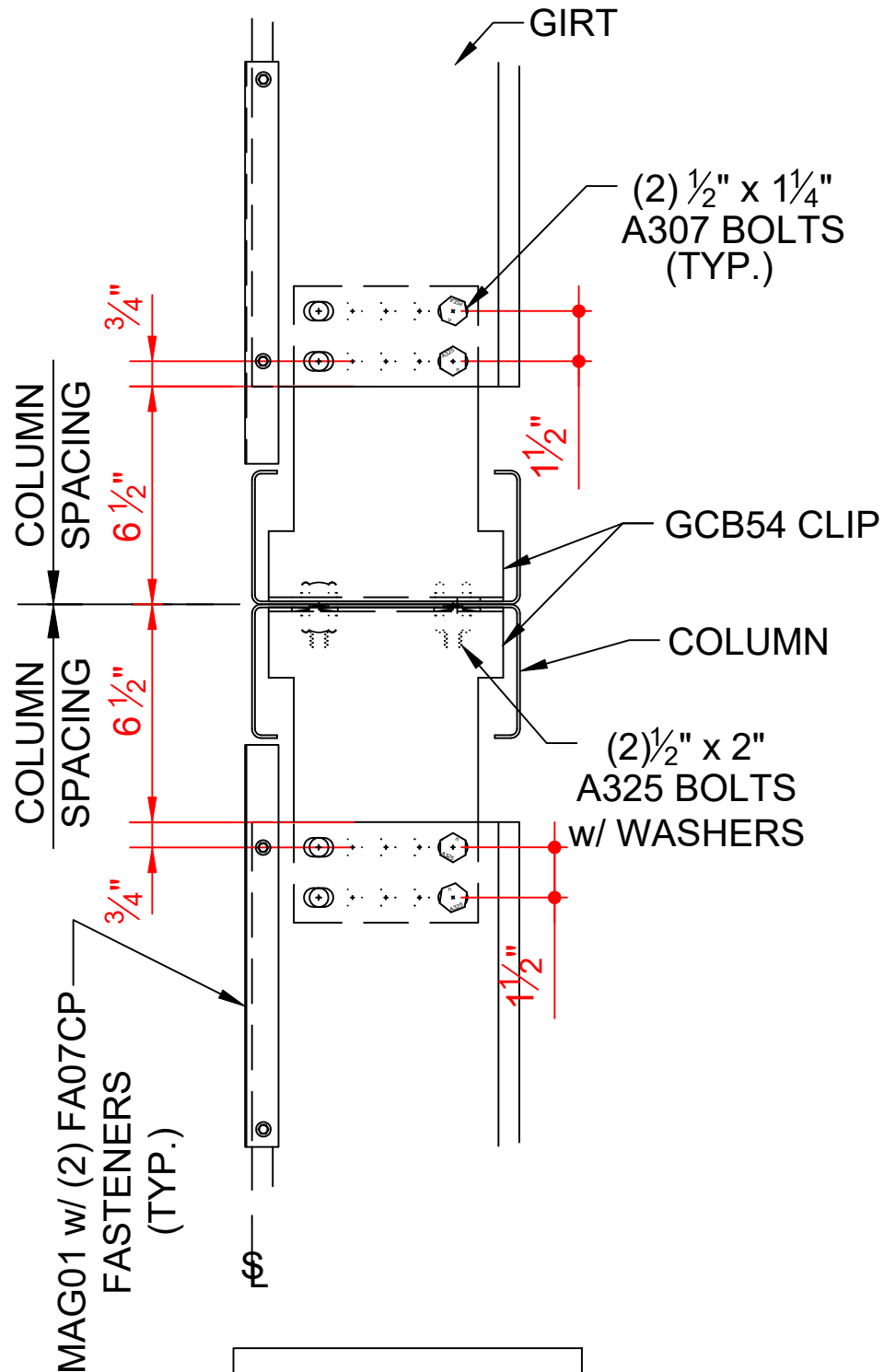


IH0022 K

PARTITION/ RECESSED WALL GIRT TO EXTERIOR
GIRTS w/ VERTICAL CEE SUPPORT

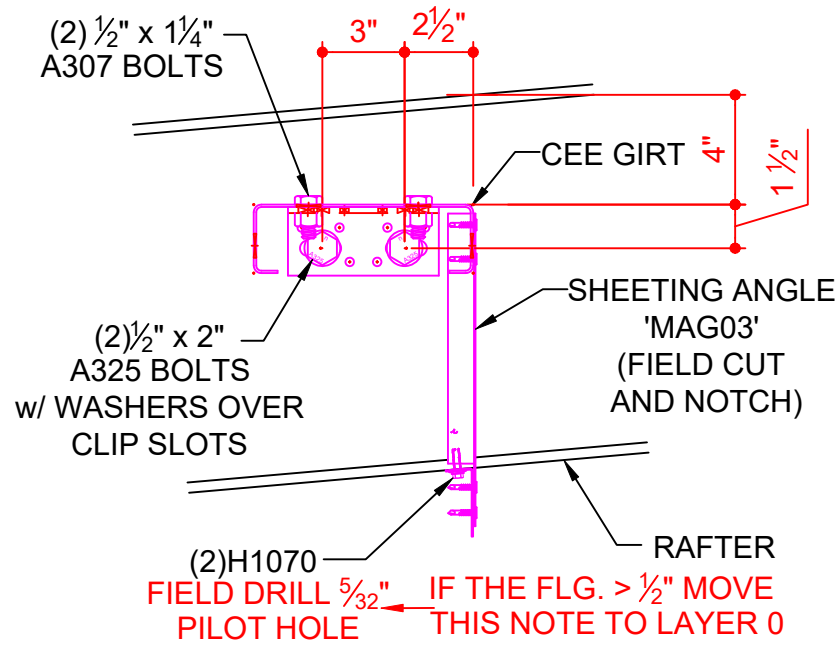
IH0025 **K**

PARTITION GIRT TO SINGLE CEE PARTITION COLUMN

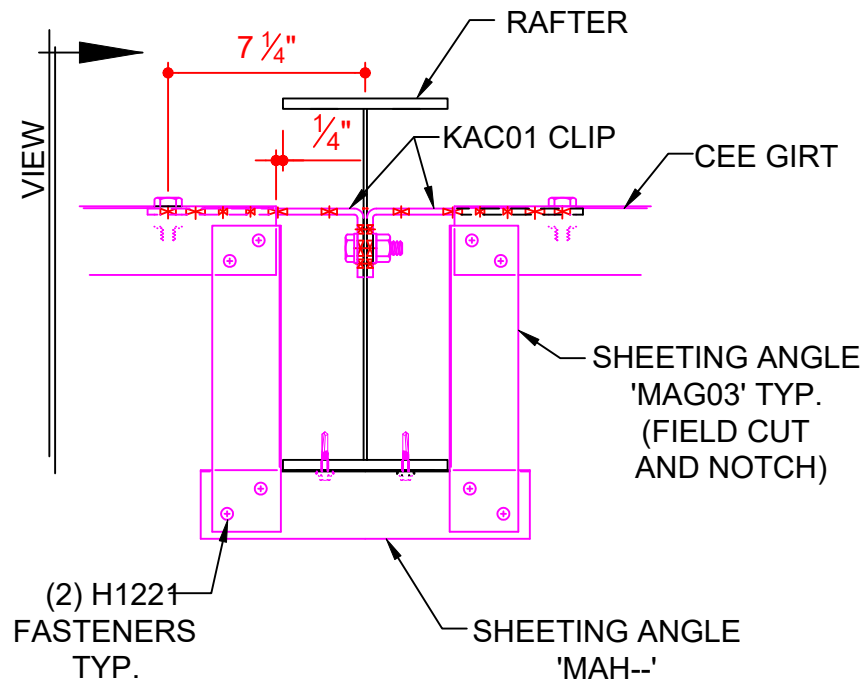


IH1025 K

PARTITION GIRTS TO DOUBLE CEE PARTITION COLUMN

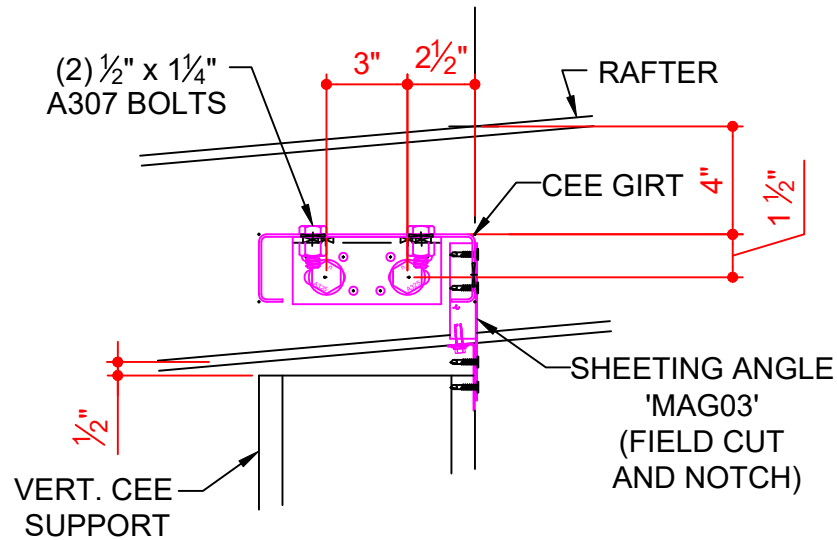
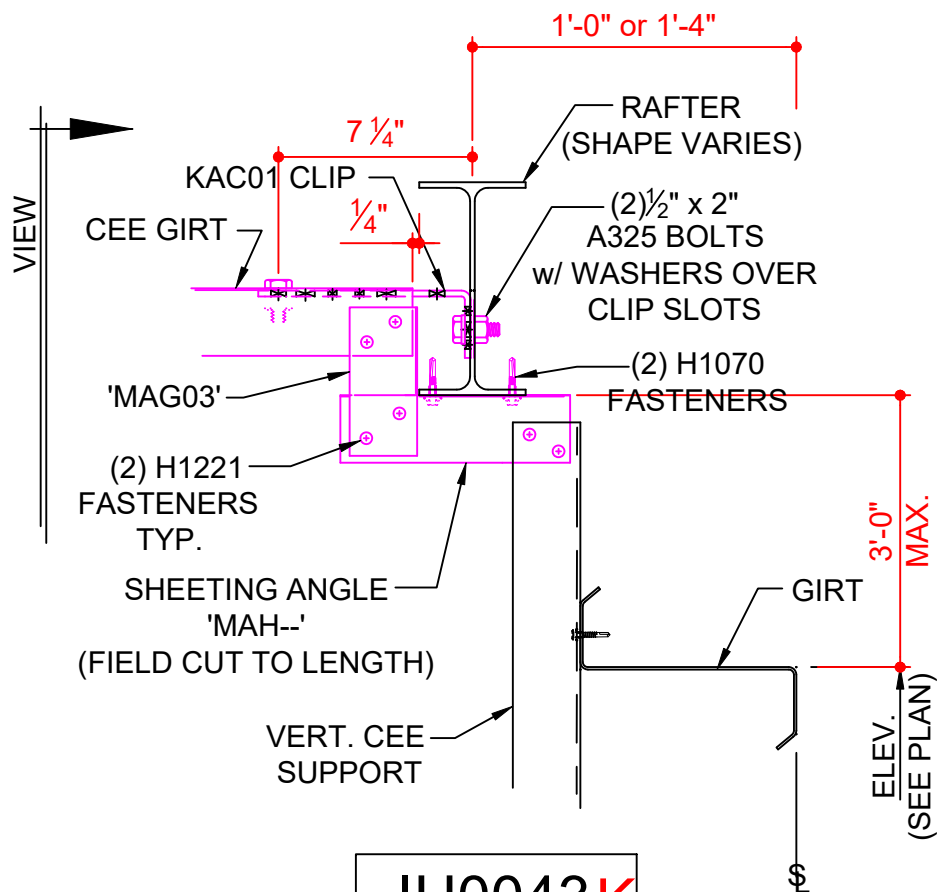


VIEW

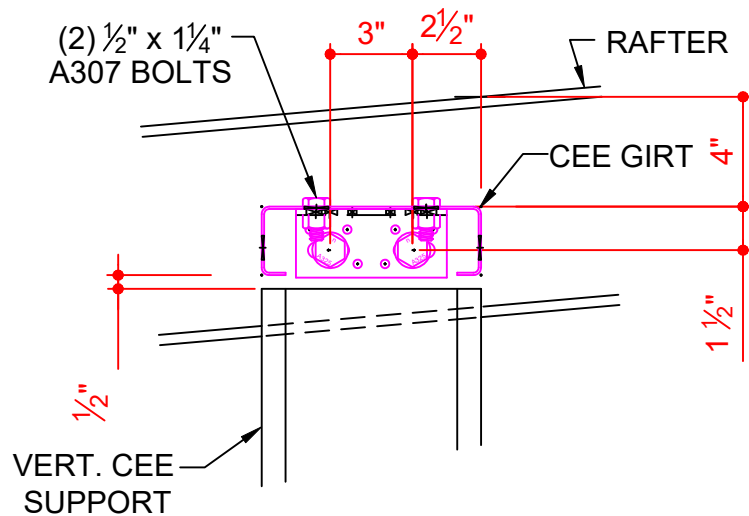
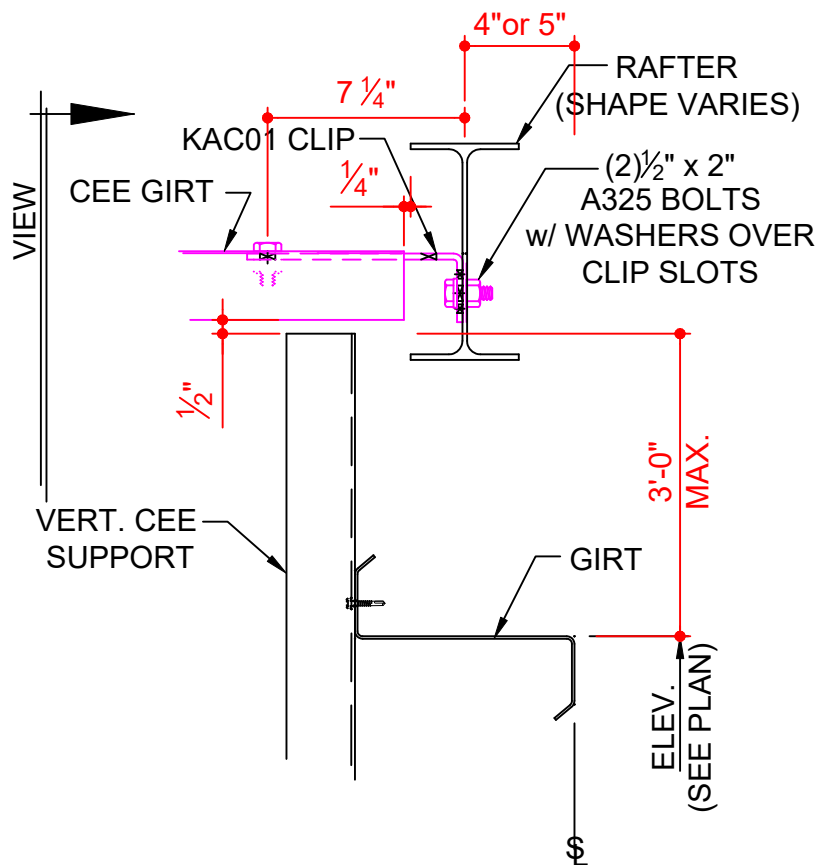


IH0041K

LONGITUDINAL PARTITION CEE
TO INTERIOR RAFTER

VIEW**IH0043K**

LONGITUDINAL PARTITION CEE
TO BY-FRAME END RAFTER

**VIEW****IH1043K**

LONGITUDINAL PARTITION CEE
TO FLUSH OR INSET END RAFTER



KIRBY
BUILDING
SYSTEMS

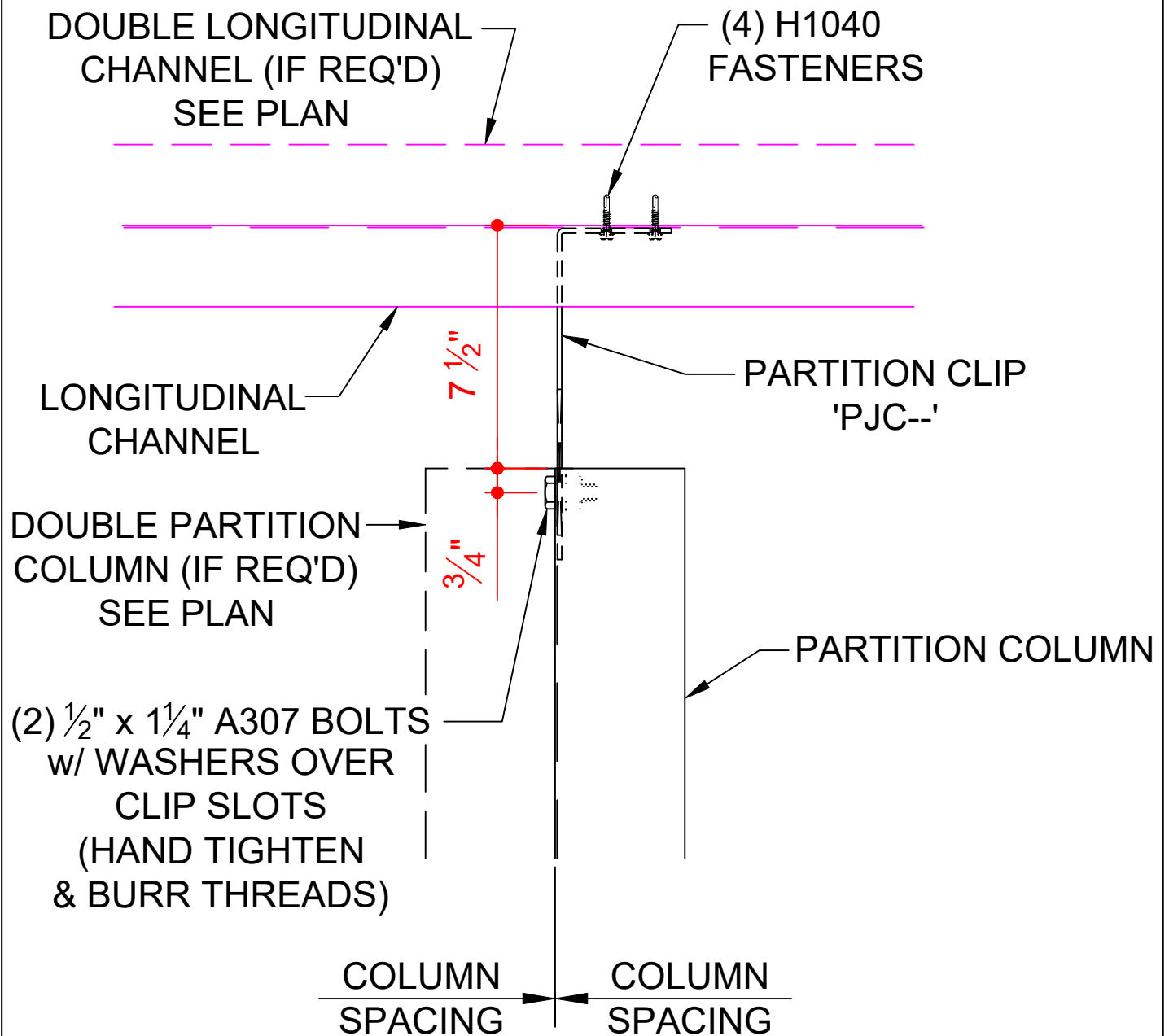
A NUDOR COMPANY

BETTER SOLUTIONS. BETTER BUILDINGS.

PREPARED BY: BKC

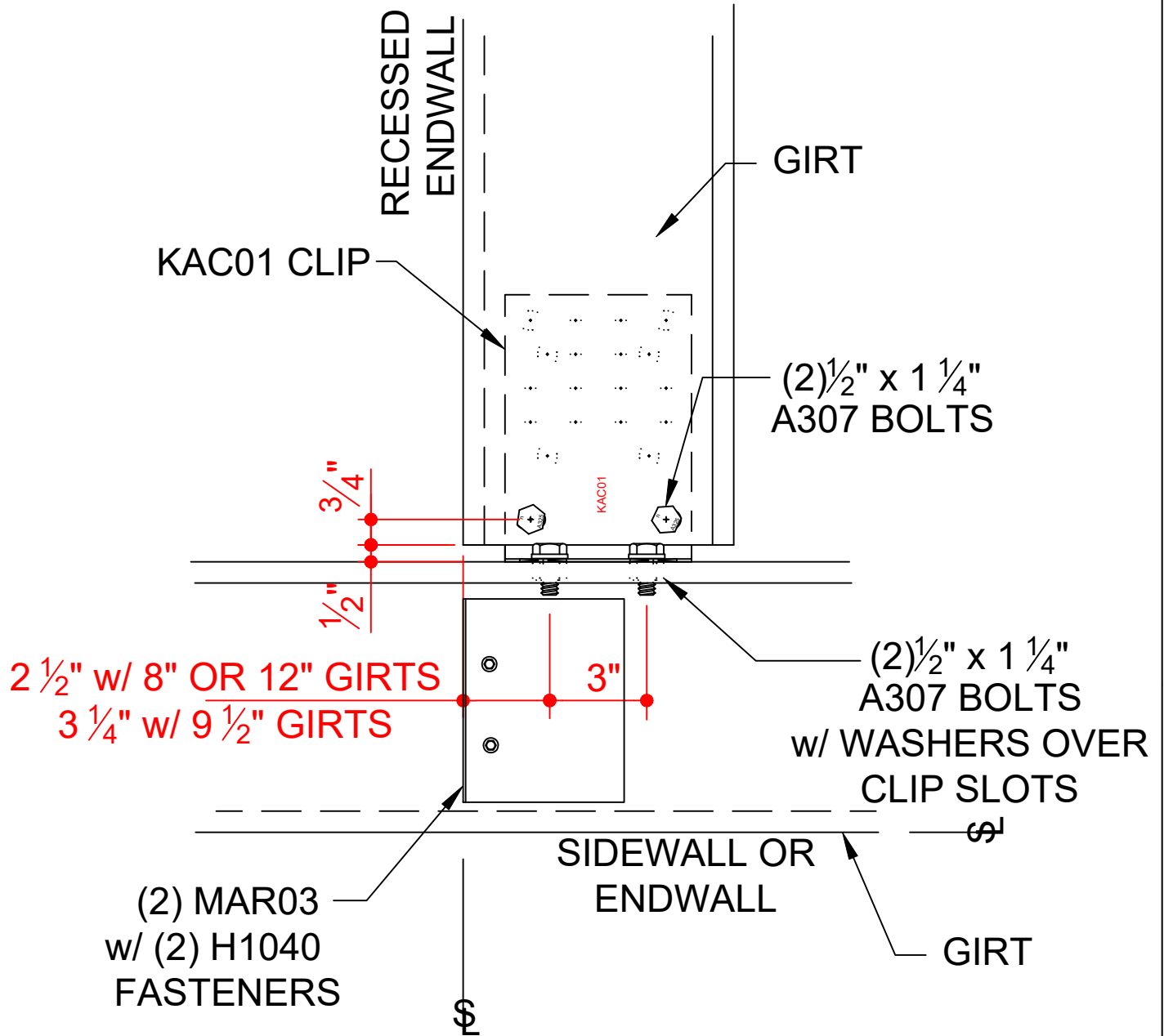
DATE: 4-23-20

IH1043



IH0045K

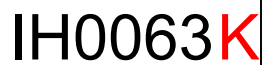
PARTITION COLUMN TOP CONNECTION TO
LONGITUDINAL SUPPORT CHANNEL



IH0061K

RECESSED GIRT TO WALL GIRT
AT THE SAME ELEVATION

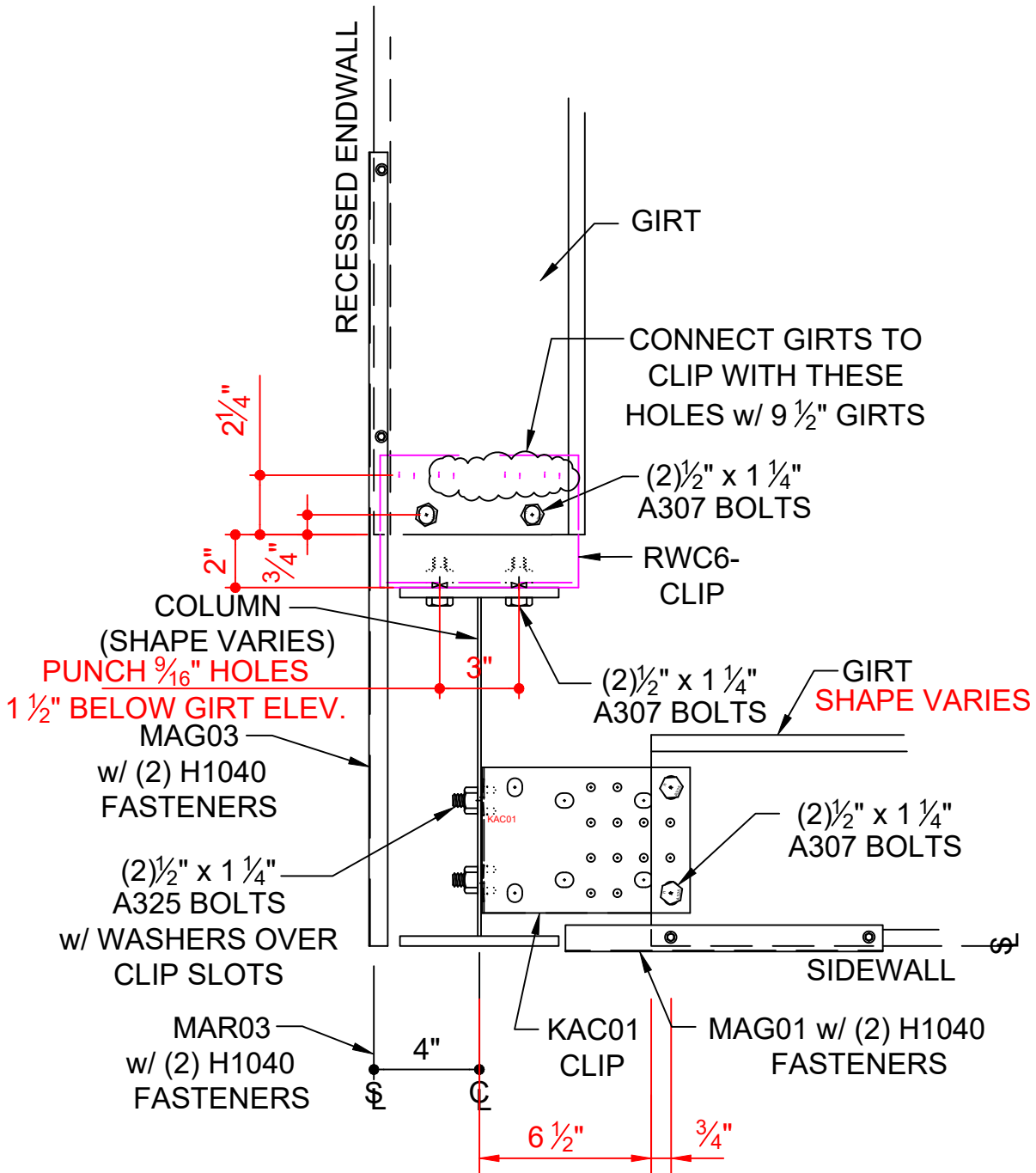
IH



KIRBY
BUILDING
SYSTEMS
A NUCOR COMPANY

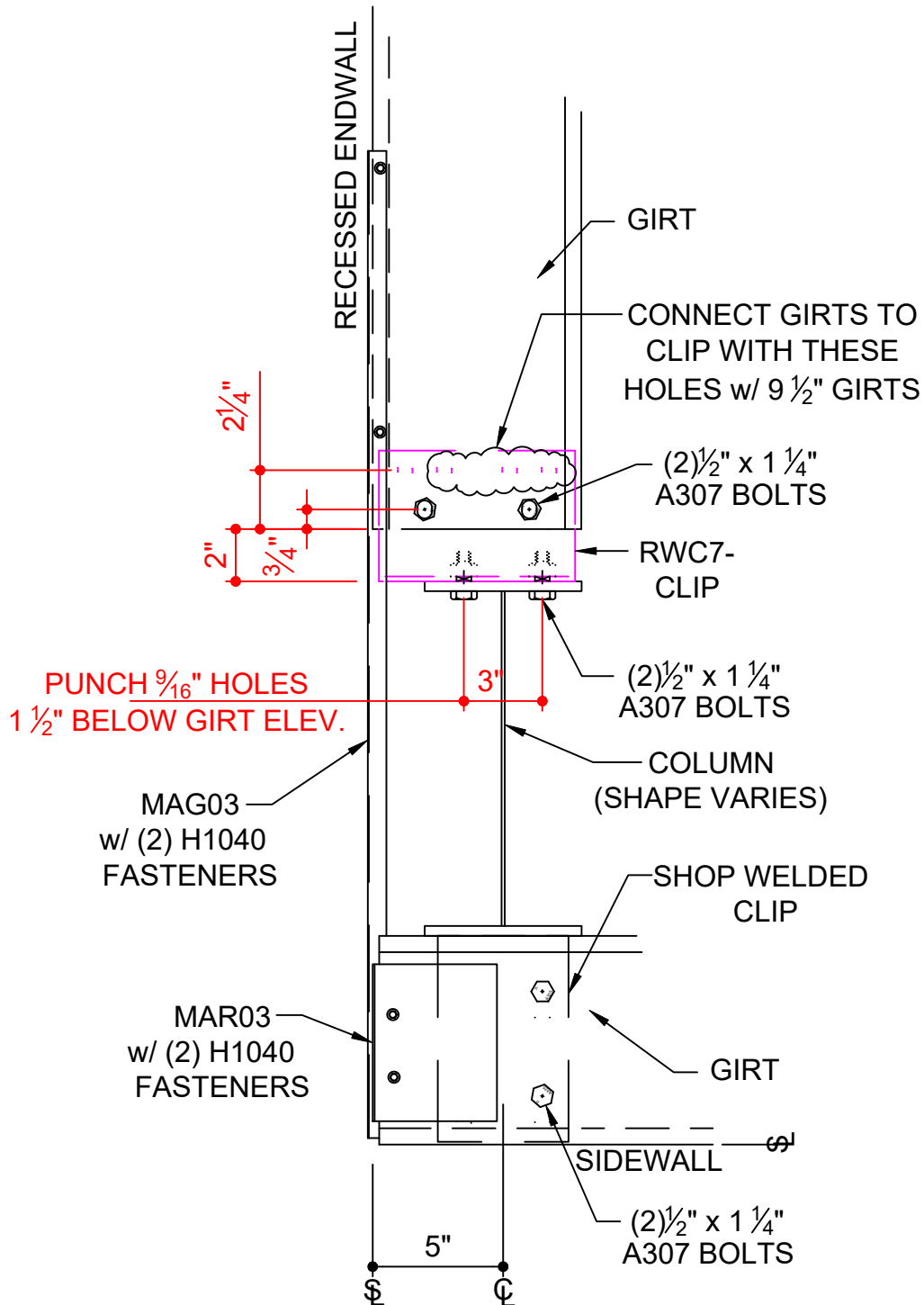
BETTER SOLUTIONS. BETTER BUILDINGS.

IH0063



IH0163K

FLUSH RECESSED EW GIRT TO FLUSH
RIGID FRAME



IH0064K

INSET RECESSED EW GIRT TO RIGID FRAME



KIRBY
BUILDING
SYSTEMS

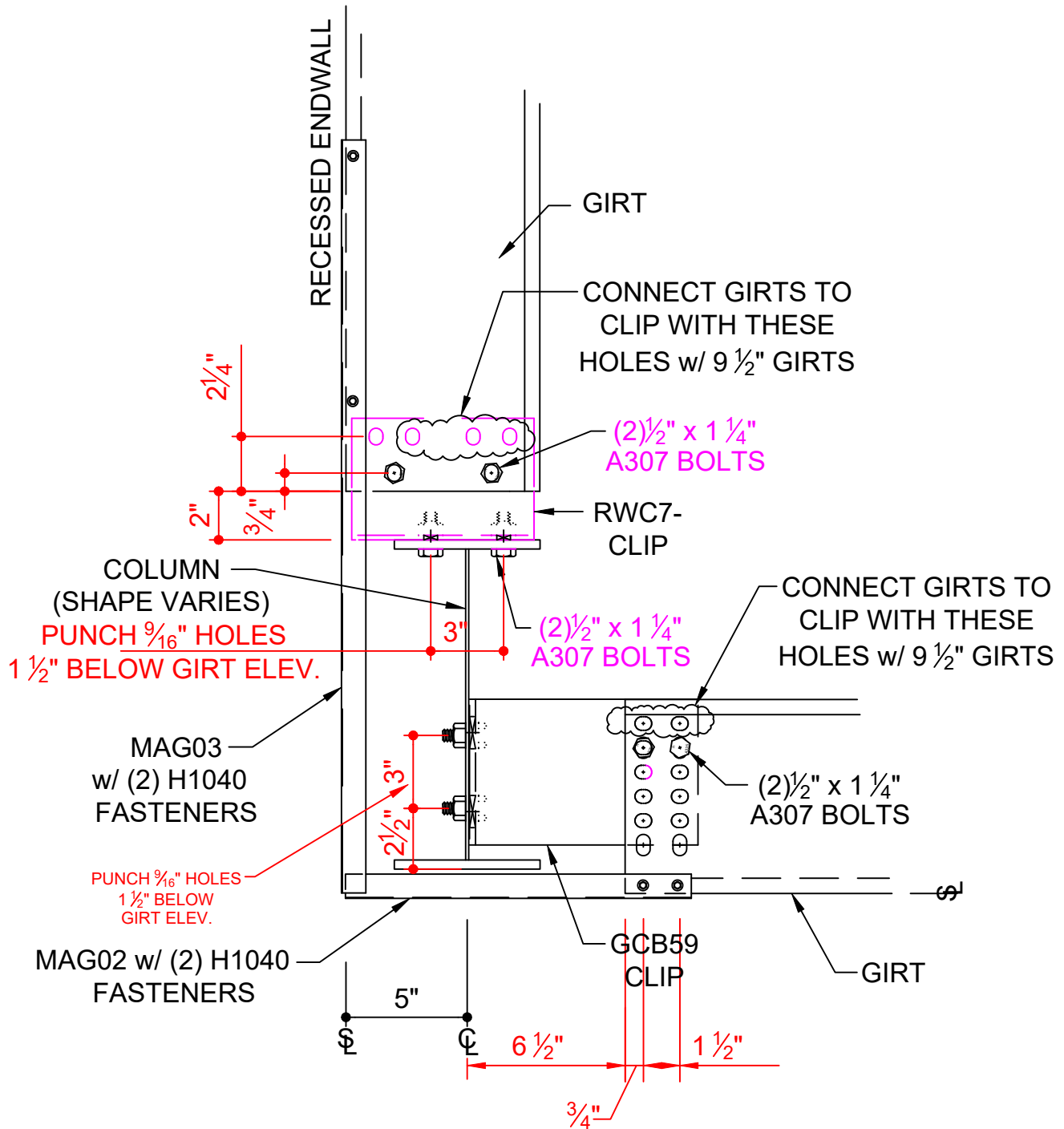
A NUCCA COMPANY

BETTER SOLUTIONS. BETTER BUILDINGS.

PREPARED BY: BKC

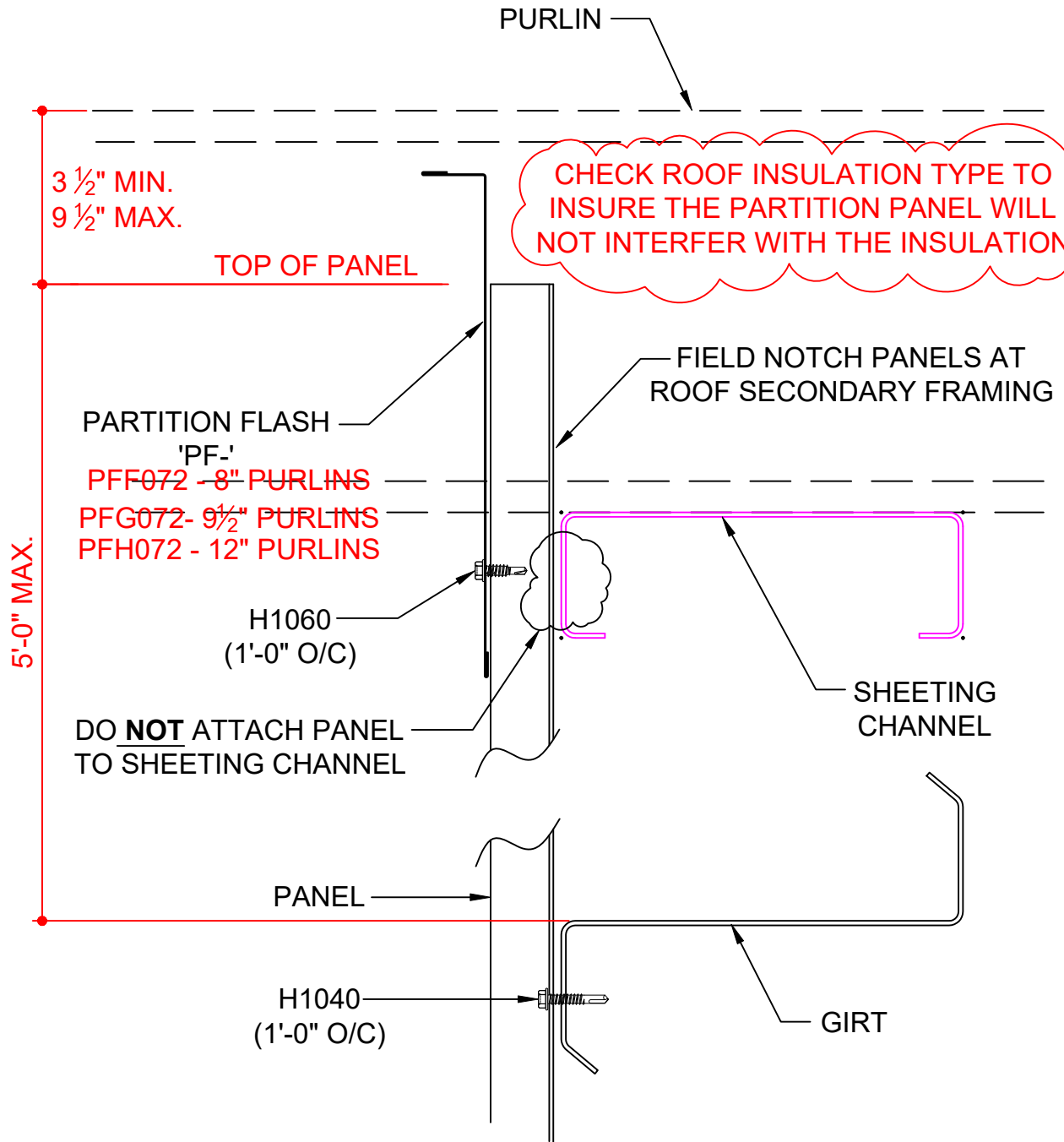
DATE: 4-23-20

IH0064



IH0264K

INSET RECESSED EW GIRT
TO INSET RIGID FRAME



IH0631K

TRANSVERSE PARTITION PANEL CAP DETAIL
w/ PANEL IN PURLIN CAVITY
ROOF SLOPE ≤ 2:12



KIRBY
BUILDING
SYSTEMS

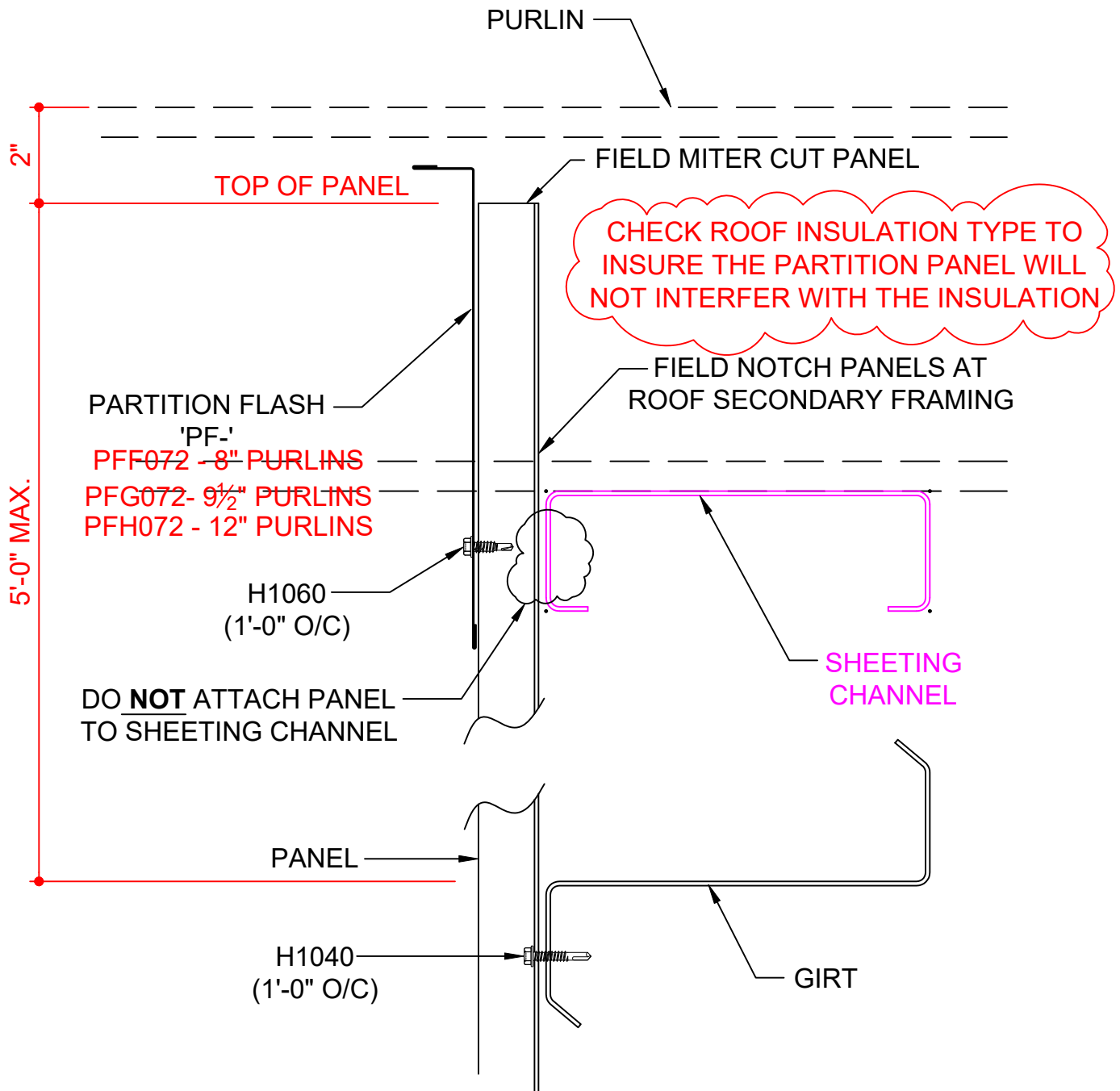
A NUDOR COMPANY

BETTER SOLUTIONS. BETTER BUILDINGS.

PREPARED BY: BKC

DATE: 4-23-20

IH0631



IH1631K

TRANSVERSE PARTITION PANEL CAP DETAIL
w/ PANEL IN PURLIN CAVITY
ROOF SLOPE > 2:12



KIRBY
BUILDING
SYSTEMS

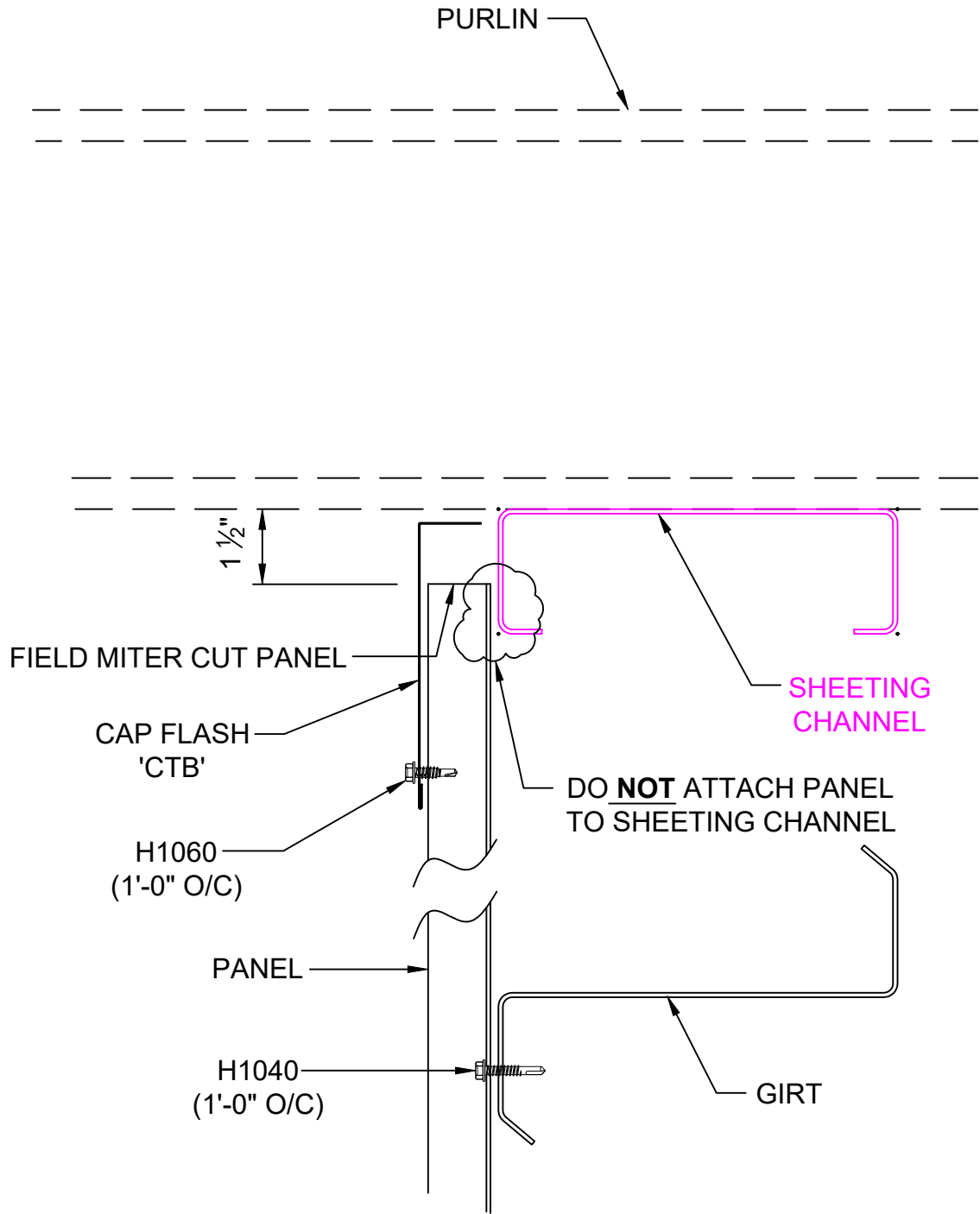
A NUCOR COMPANY

BETTER SOLUTIONS. BETTER BUILDINGS.

PREPARED BY: BKC

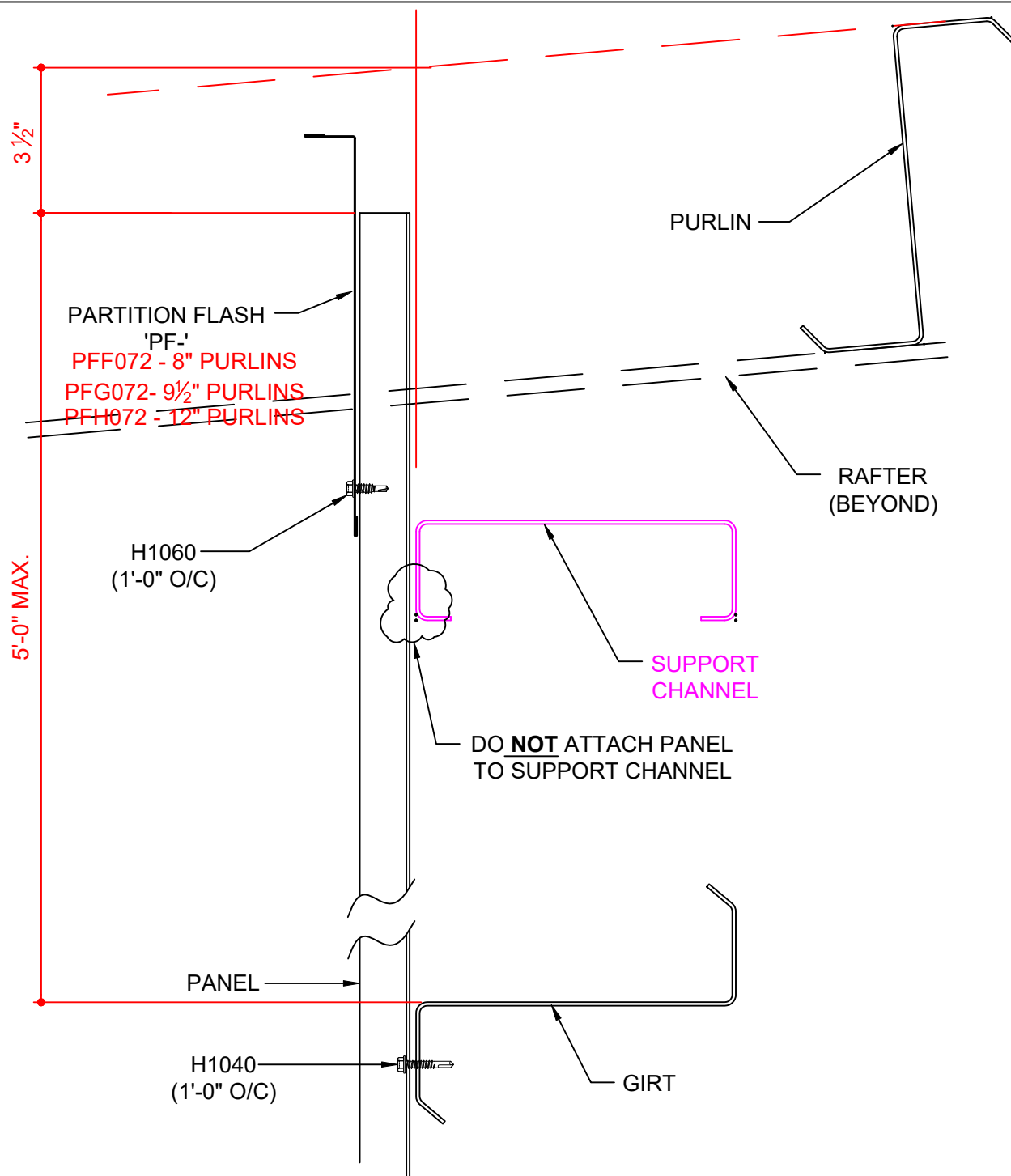
DATE: 4-23-20

IH1631



IH0633K

TRANSVERSE PARTITION PANEL CAP DETAIL
w/ PANEL BELOW PURLIN CAVITY



PARTITION FLASH

'PF-'

PFF072 - 8" PURLINS

PFG072- 9½" PURLINS

~~PFH072 - 12" PURLINS~~

PURLIN

- RAFTER
(BEYOND)

H1060 —
(1'-0" O/C)

SUPPORT
CHANNEL

DO **NOT** ATTACH PANEL
TO SUPPORT CHANNEL

PANEL

H1040—
(1'-0" O/C)

GIRT

IH0641K

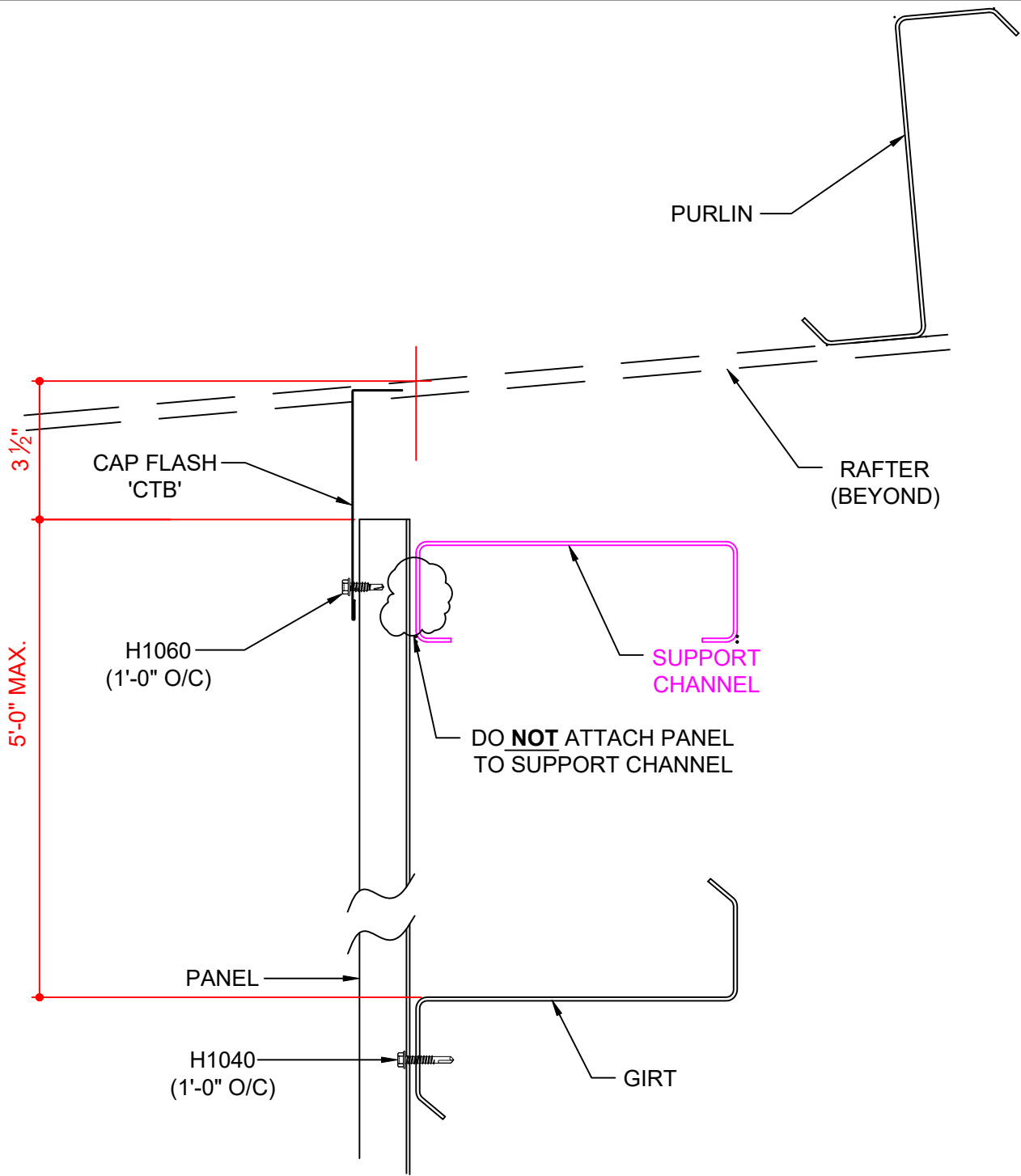
LONGITUDINAL PARTITION PANEL CAP DETAIL w/ PANEL IN PURLIN CAVITY



PREPARED BY: BKC

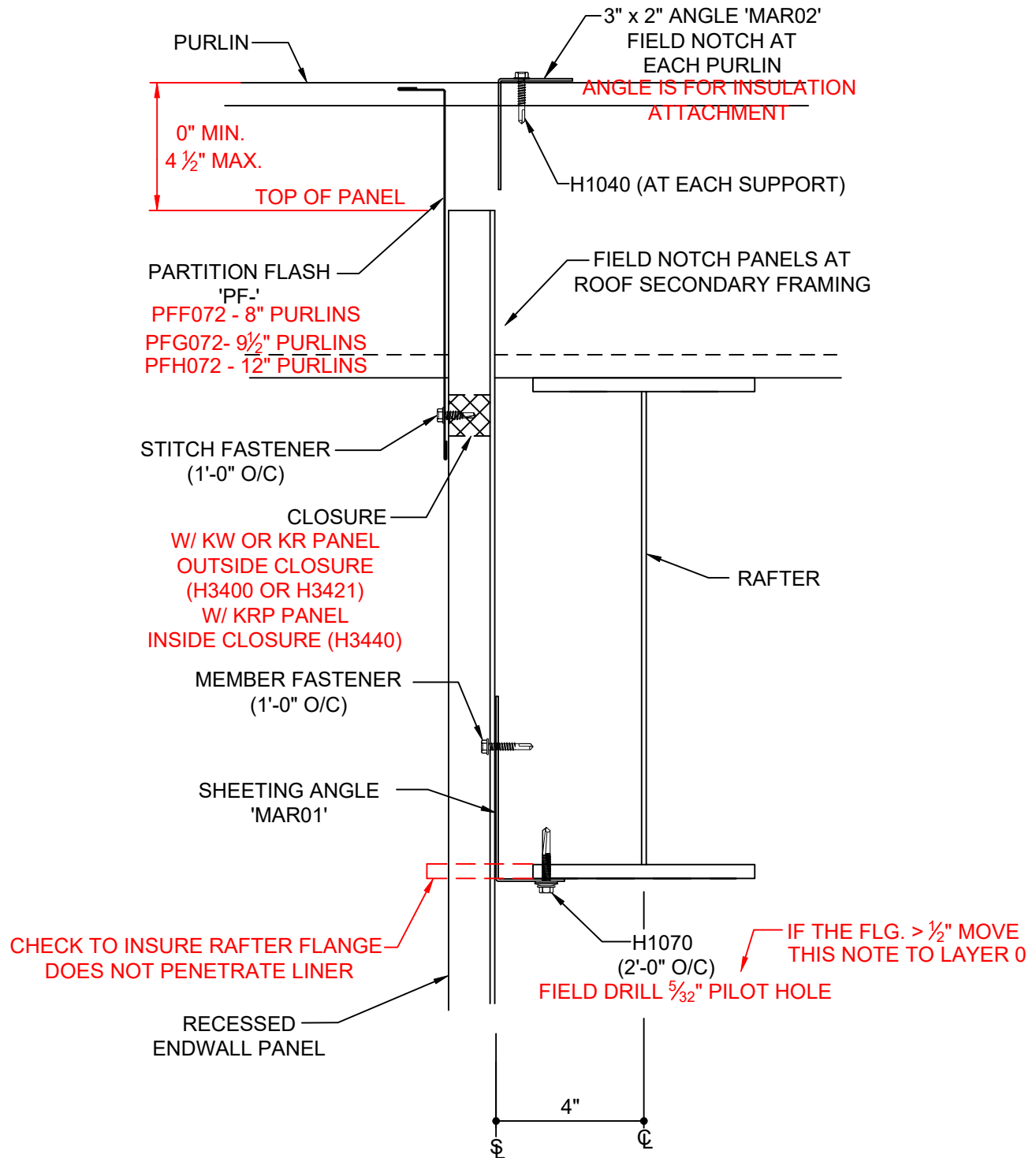
DATE: 4-23-20

IH0641



IH0643K

LONGITUDINAL PARTITION PANEL CAP DETAIL
w/ PANEL BELOW PURLIN CAVITY



IH0651K

FLUSH RECESSED WALL PANEL CAP DETAIL
w/ ROOF SLOPES $\leq 1 \frac{1}{2}:12$



KIRBY
BUILDING
SYSTEMS

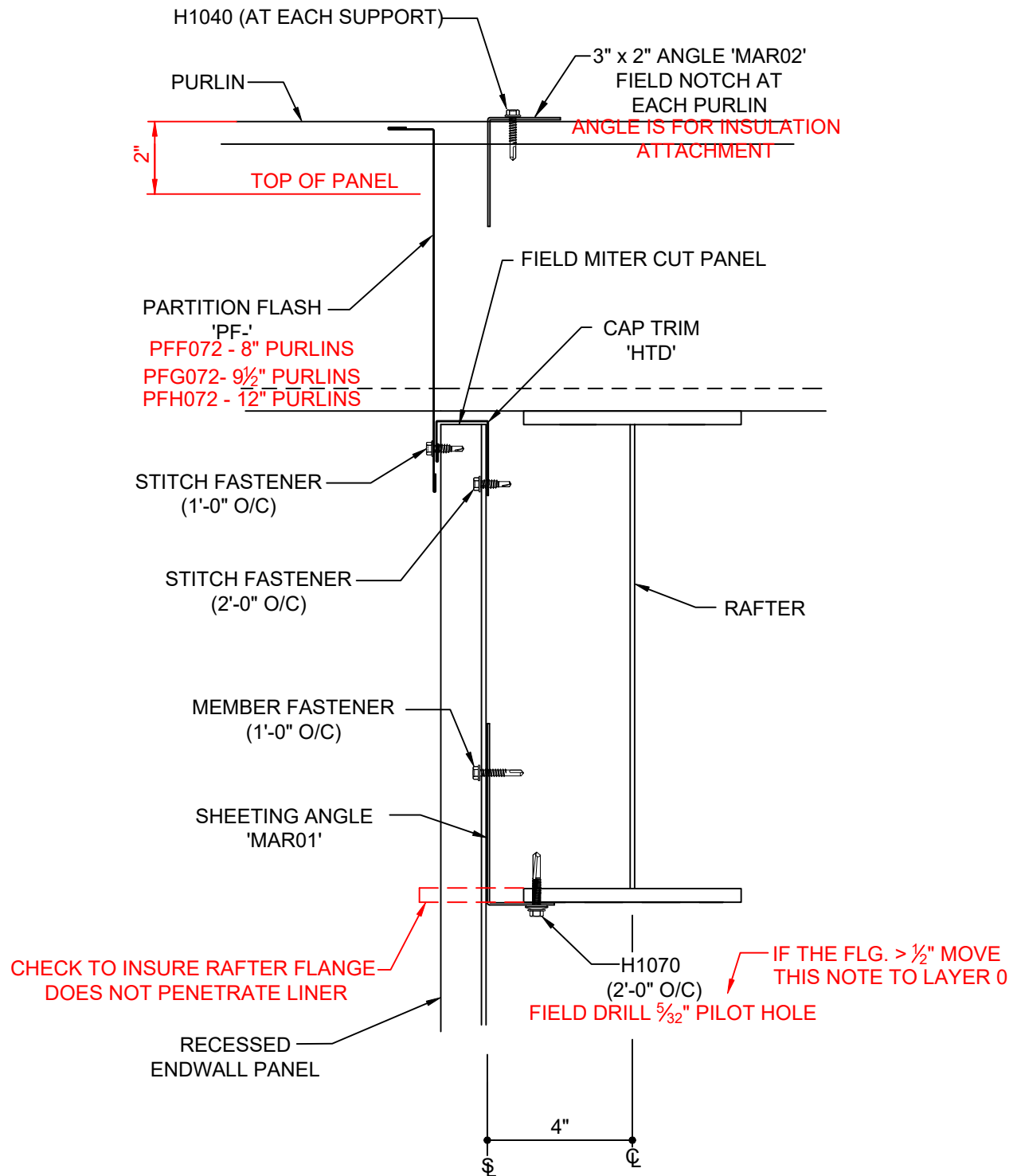
A NUDOR COMPANY

BETTER SOLUTIONS. BETTER BUILDINGS.

PREPARED BY: BKC

DATE: 4-23-20

IH0651



IH1651K

FLUSH RECESSED WALL PANEL CAP DETAIL
w/ ROOF SLOPES > 1 ½:12



KIRBY
BUILDING
SYSTEMS

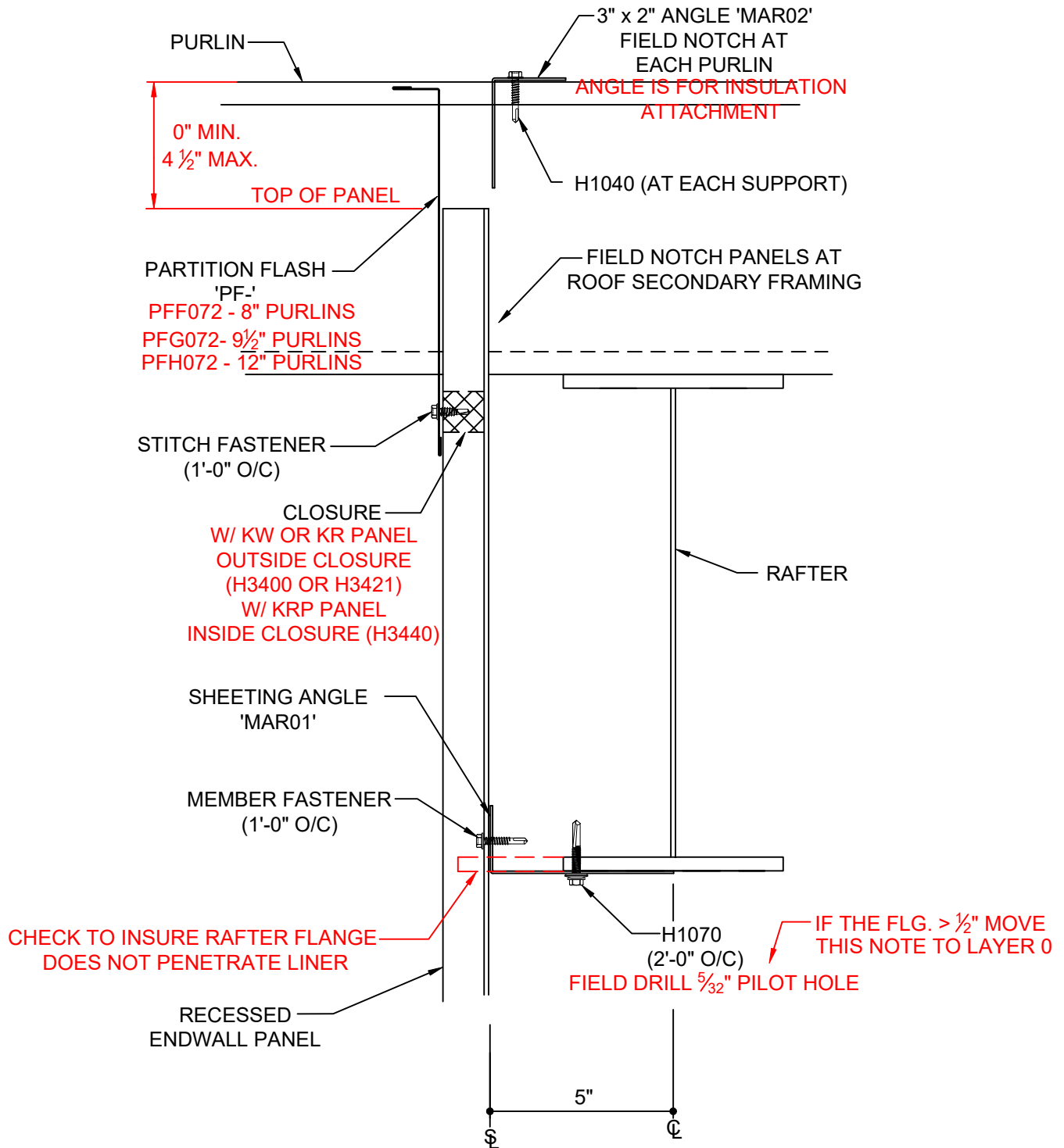
A NUDOR COMPANY

BETTER SOLUTIONS. BETTER BUILDINGS.

PREPARED BY: BKC

DATE: 4-24-20

IH1651



IH0653K

INSET RECESSED WALL PANEL CAP DETAIL
w/ ROOF SLOPES $\leq 1 \frac{1}{2}$:12



KIRBY
BUILDING
SYSTEMS

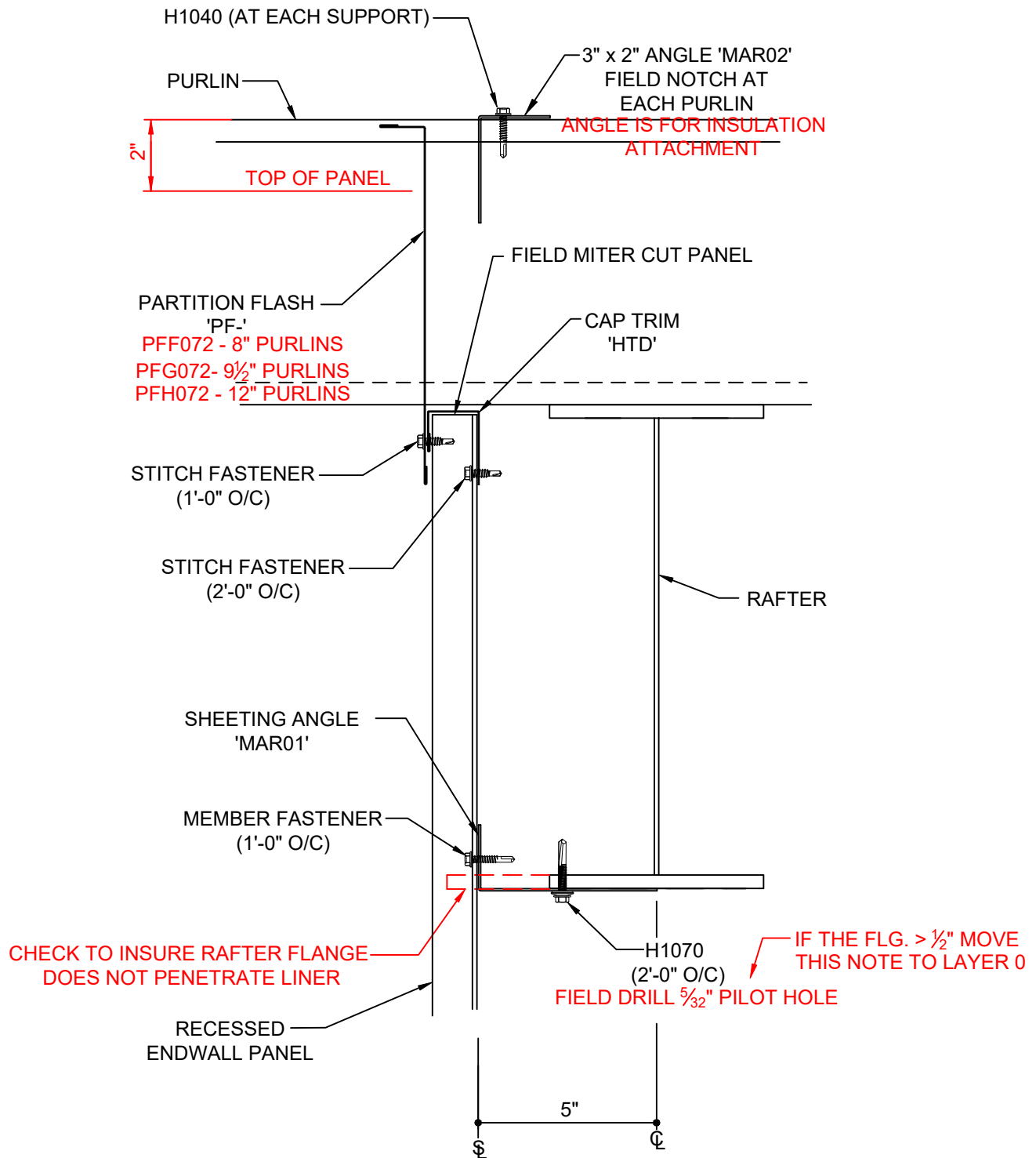
A NUBBA COMPANY

BETTER SOLUTIONS. BETTER BUILDINGS.

PREPARED BY: BKC

DATE: 4-24-20

IH0653



IH1653K

INSET RECESSED WALL PANEL CAP DETAIL
w/ ROOF SLOPES > 1 ½:12



KIRBY
BUILDING
SYSTEMS

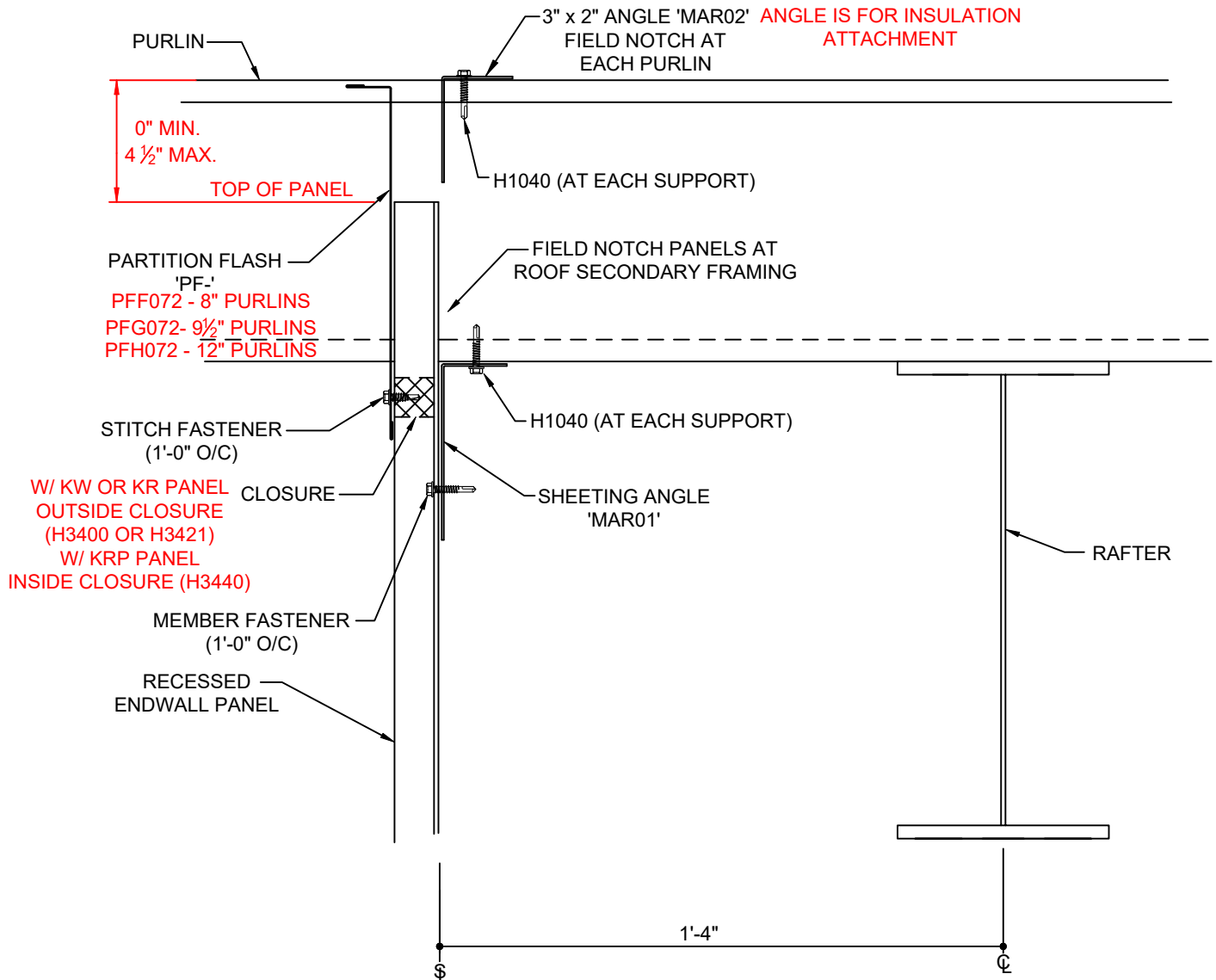
A NUBOR COMPANY

BETTER SOLUTIONS. BETTER BUILDINGS.

PREPARED BY: BKC

DATE: 4-24-20

IH1653



IH0656K

RECESSED WALL PANEL CAP DETAIL
FRAME 1'-4" FROM ℄
w/ ROOF SLOPES $\leq 1 \frac{1}{2}$:12



KIRBY
BUILDING
SYSTEMS

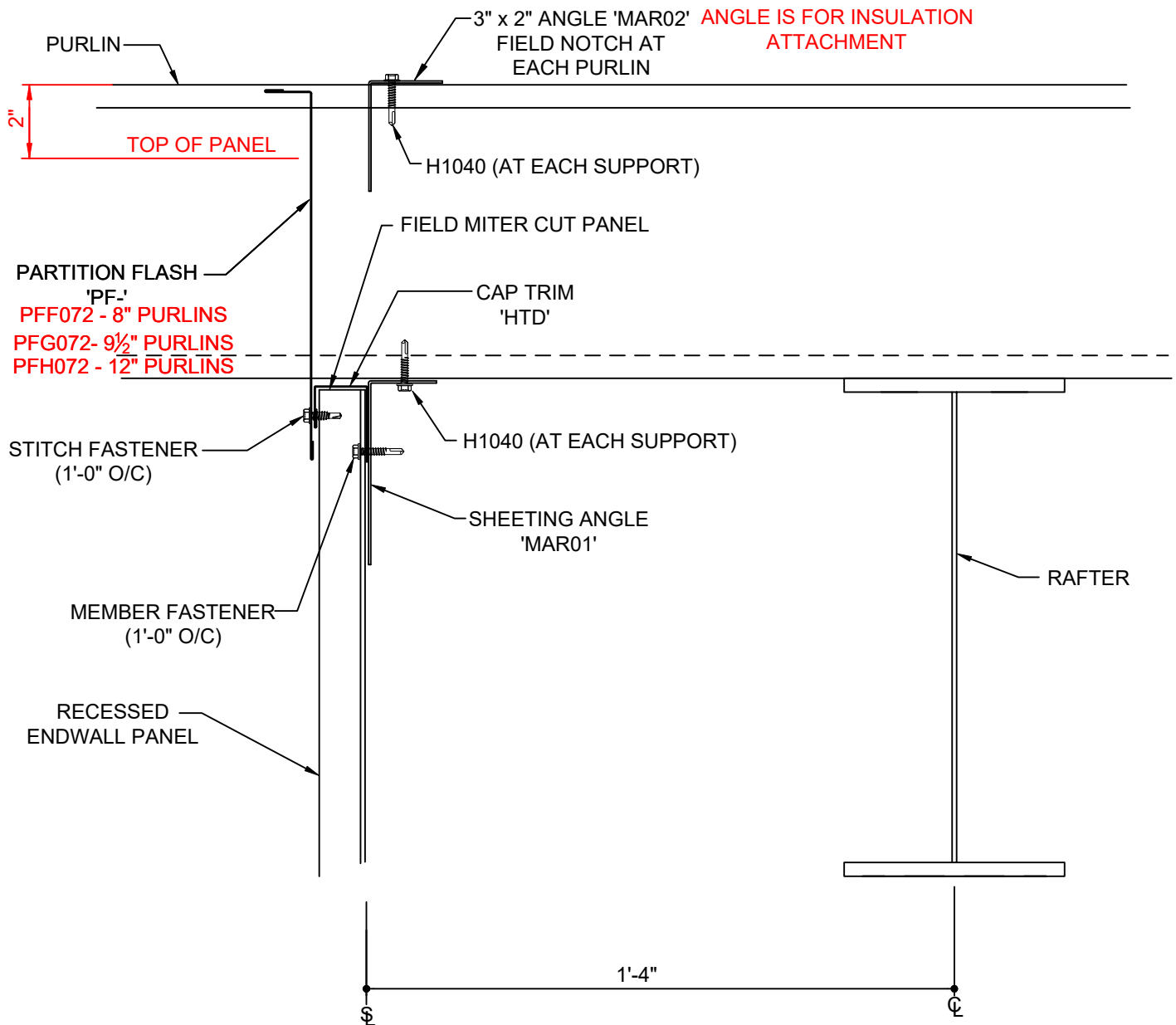
A NUDOR COMPANY

BETTER SOLUTIONS. BETTER BUILDINGS.

PREPARED BY: BKC

DATE: 4-24-20

IH0656



IH1656K

RECESSED WALL PANEL CAP DETAIL
 FRAME 1'-4" FROM CL
 w/ ROOF SLOPES > 1 ½:12



KIRBY
BUILDING
SYSTEMS

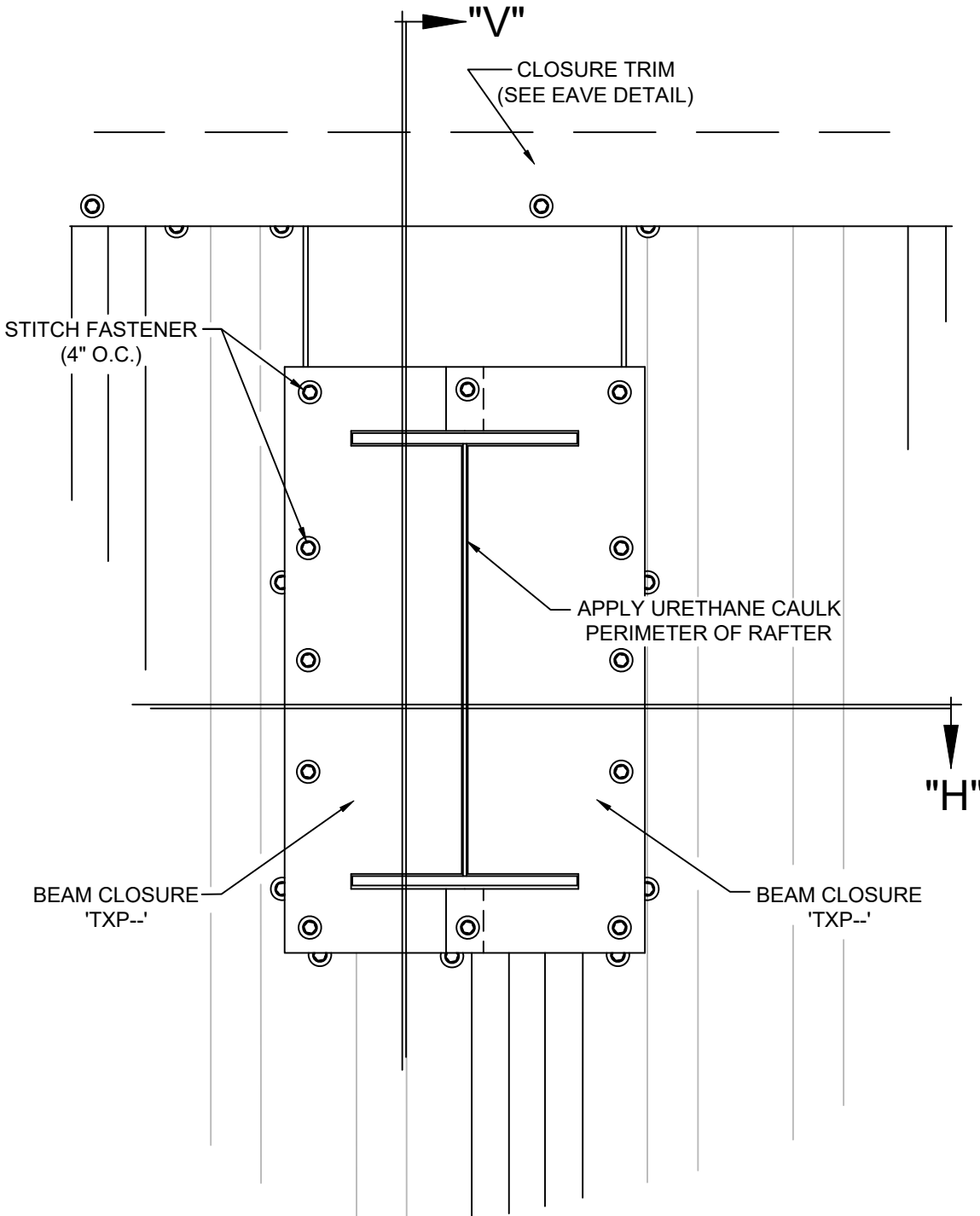
A NUCCA COMPANY

BETTER SOLUTIONS. BETTER BUILDINGS.

PREPARED BY: BKC

DATE: 4-24-20

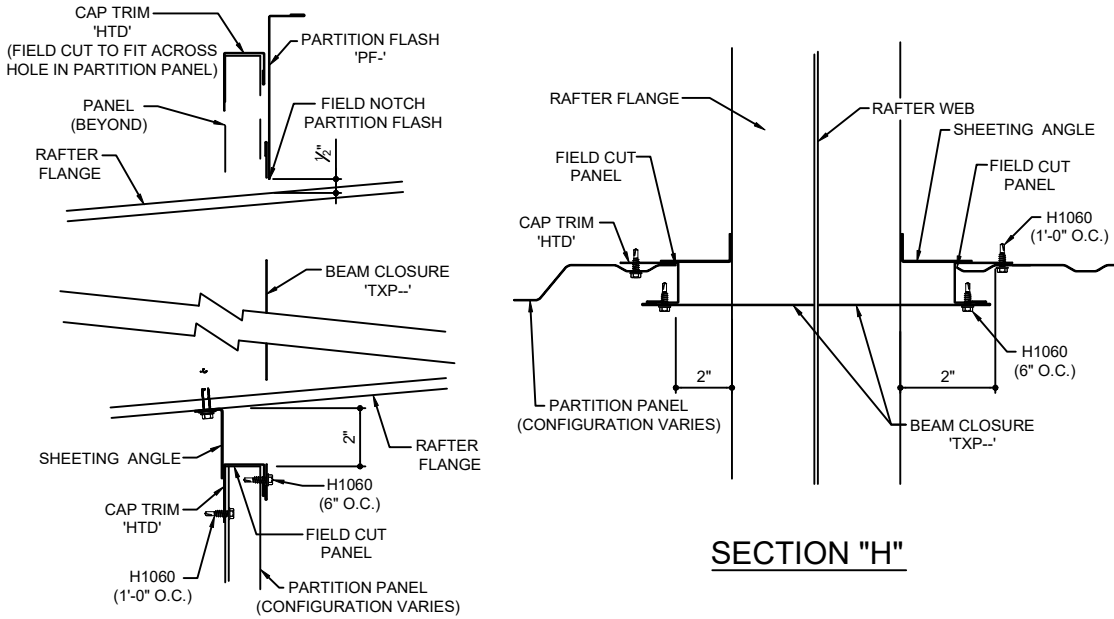
IH1656



WILL INSERT AS FULL SIZE DRAWING

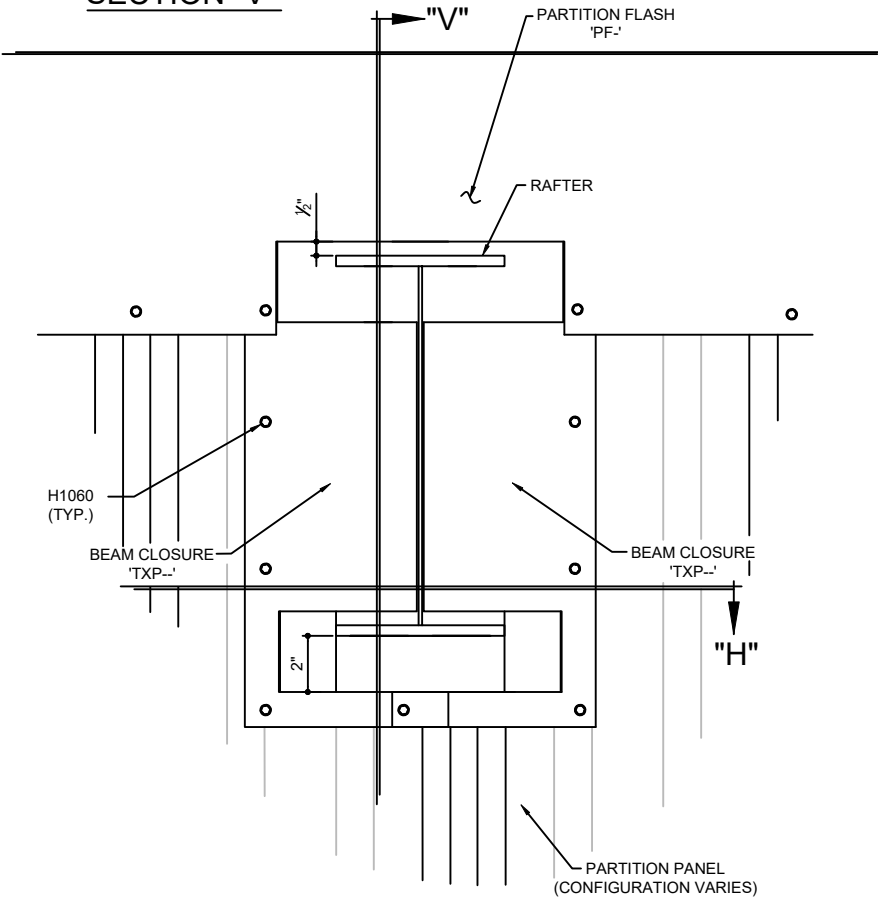
IH0681

BEAM CLOSURE INSTALLATION AT RECESSED SIDEWALLS



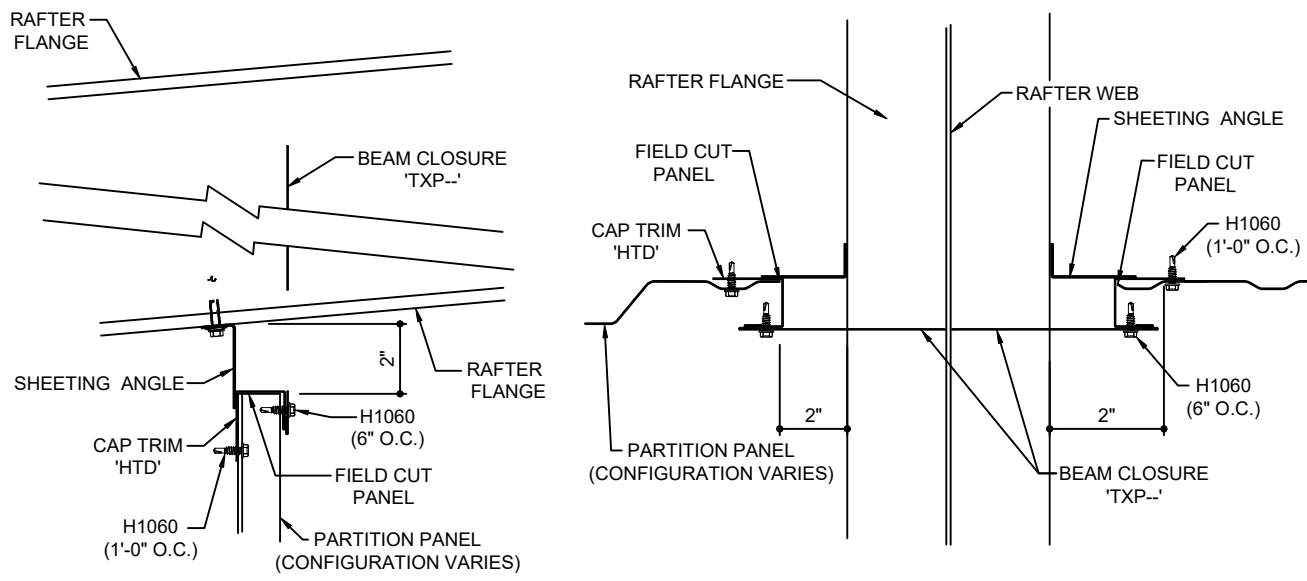
SECTION "V"

SECTION "H"



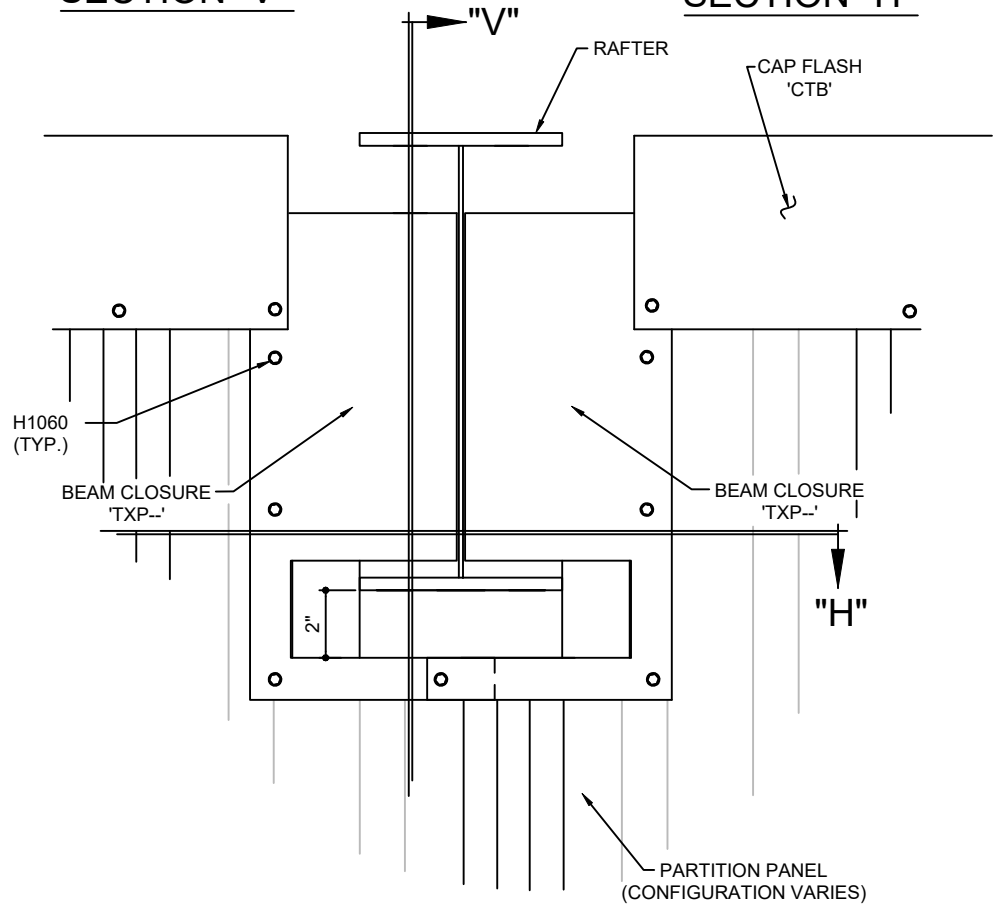
IH0686

LONGITUDINAL PARTITION WALL TRIM AT RAFTER PENETRATIONS



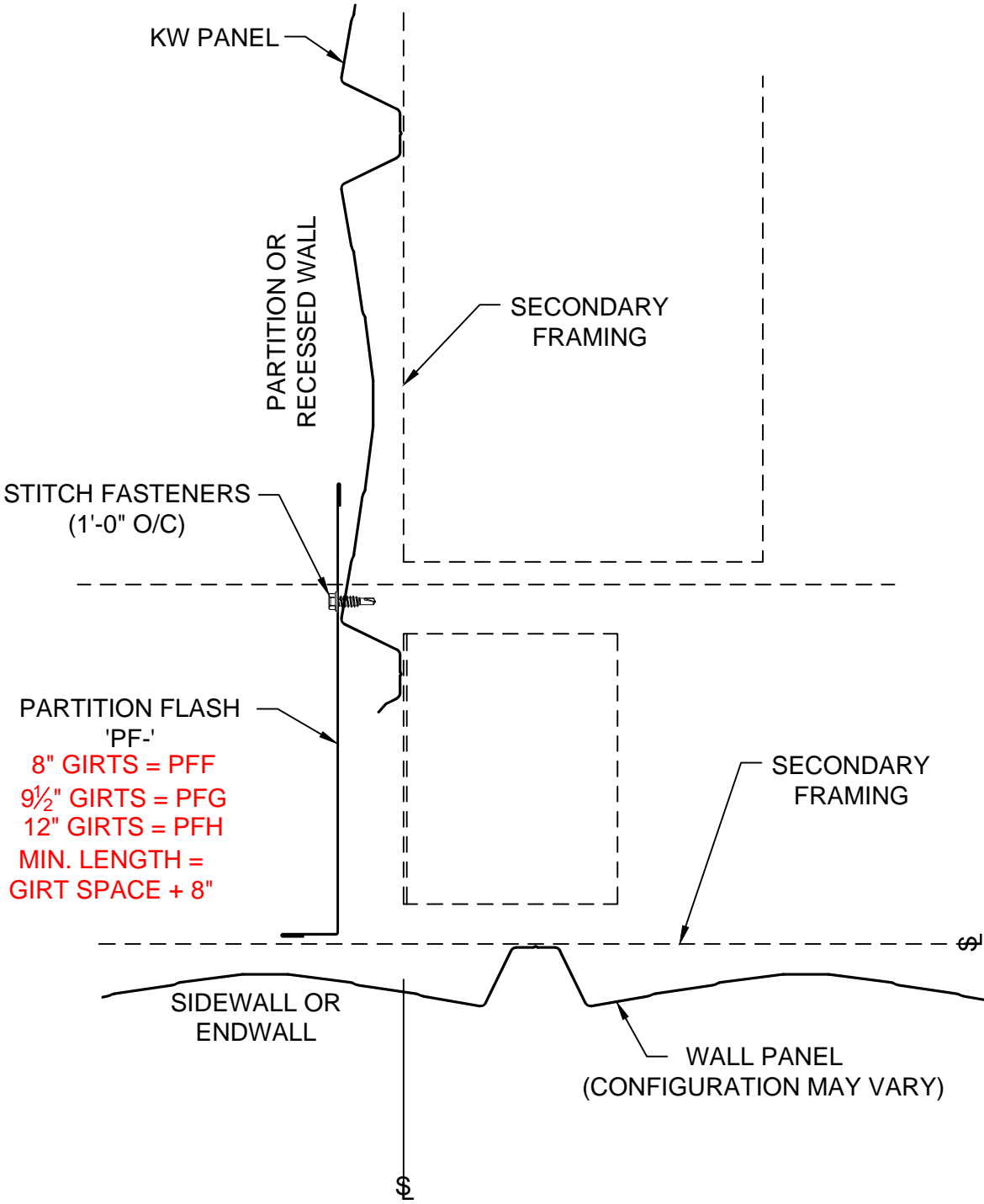
SECTION "V"

SECTION "H"



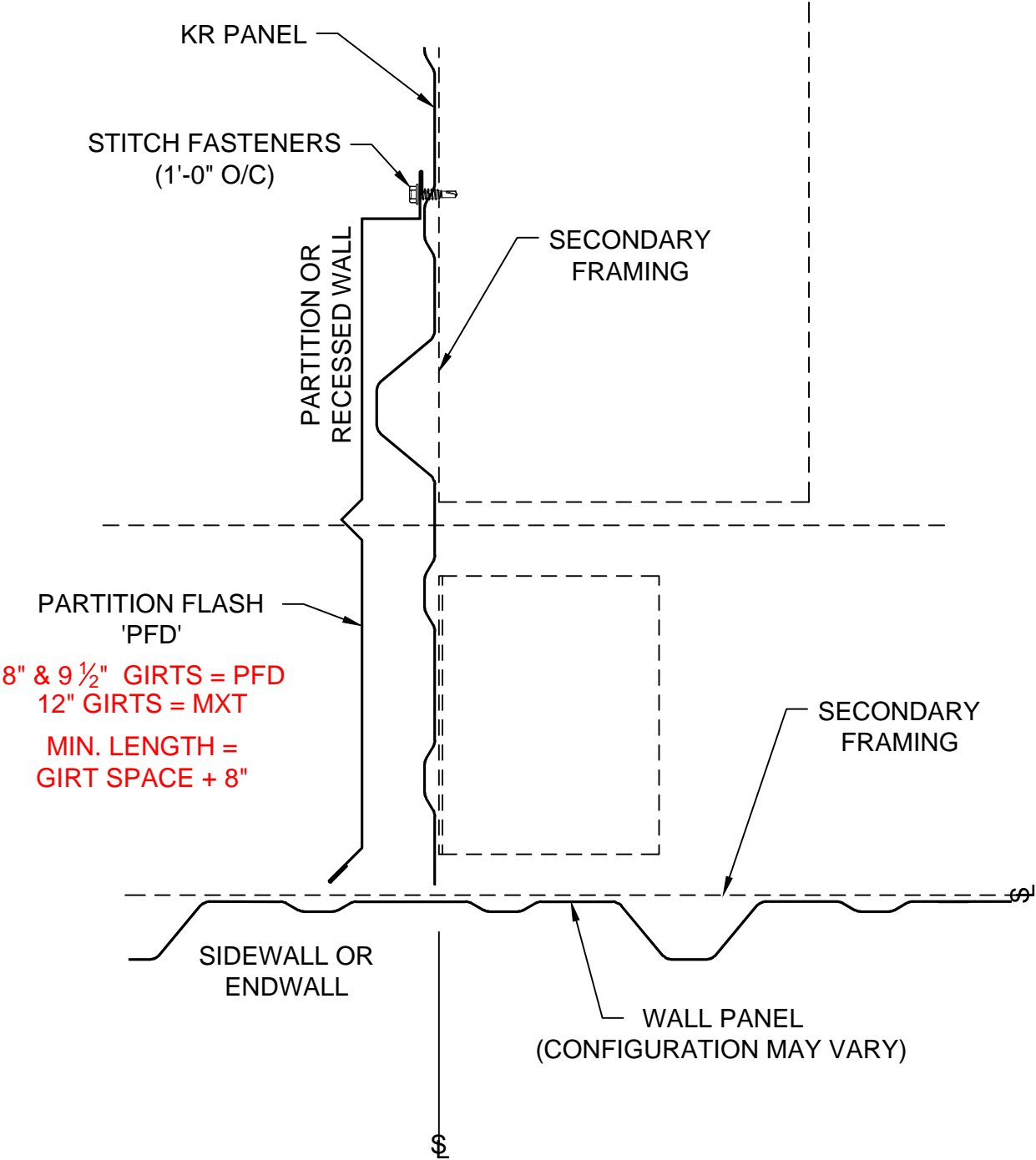
IH0689

LONGITUDINAL PARTITION WALL TRIM AT RAFTER PENETRATIONS
w/ PANEL BELOW PURLIN CAVITY



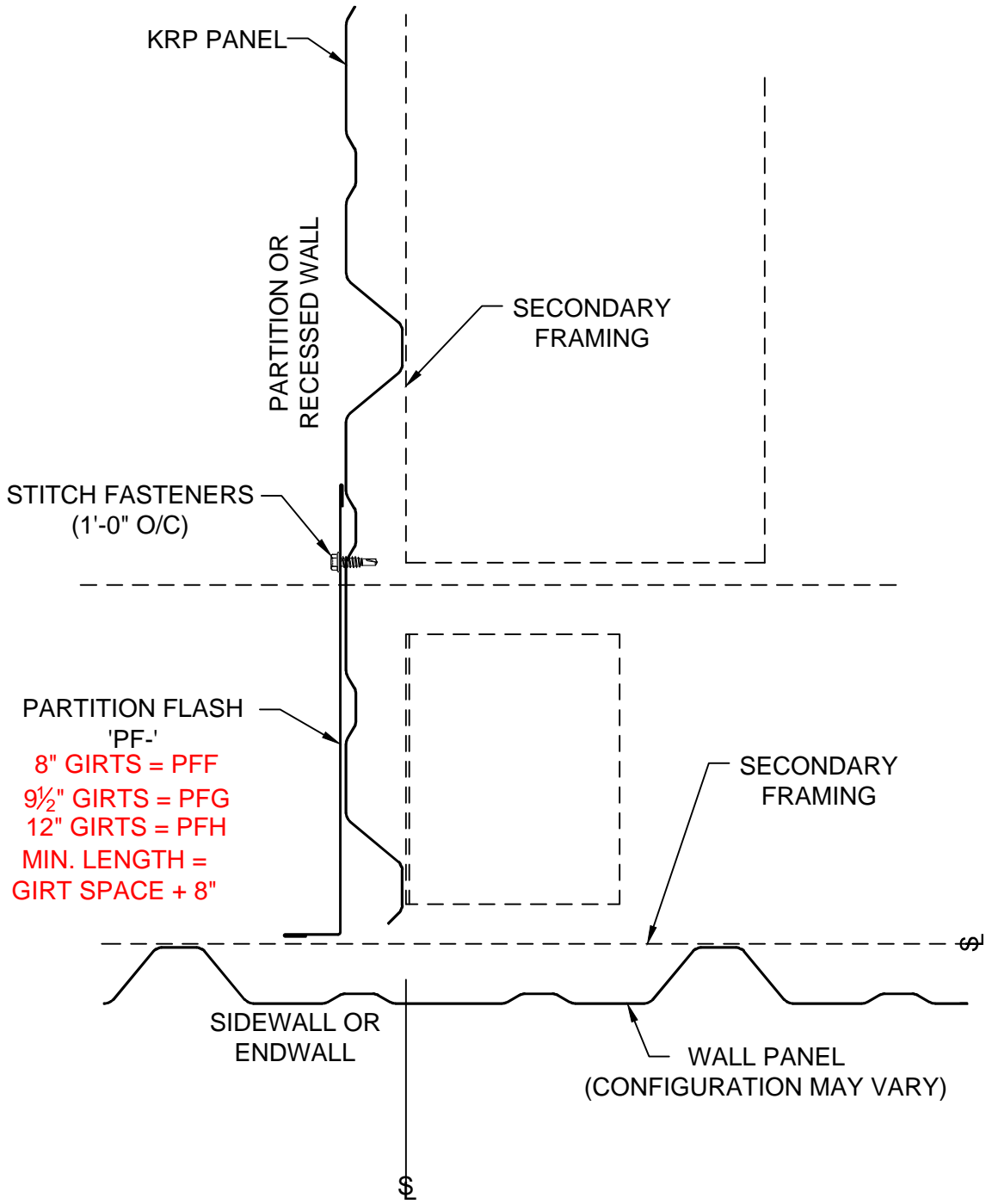
IH0111 K

PARTITION OR RECESSED WALL TERMINATION AT INSIDE CORNER w/ KW PANEL



IH0211 K

PARTITION OR RECESSED WALL TERMINATION AT INSIDE CORNER w/ KR PANEL



IH0311 K

PARTITION OR RECESSED WALL TERMINATION AT INSIDE CORNER w/ KRP PANEL