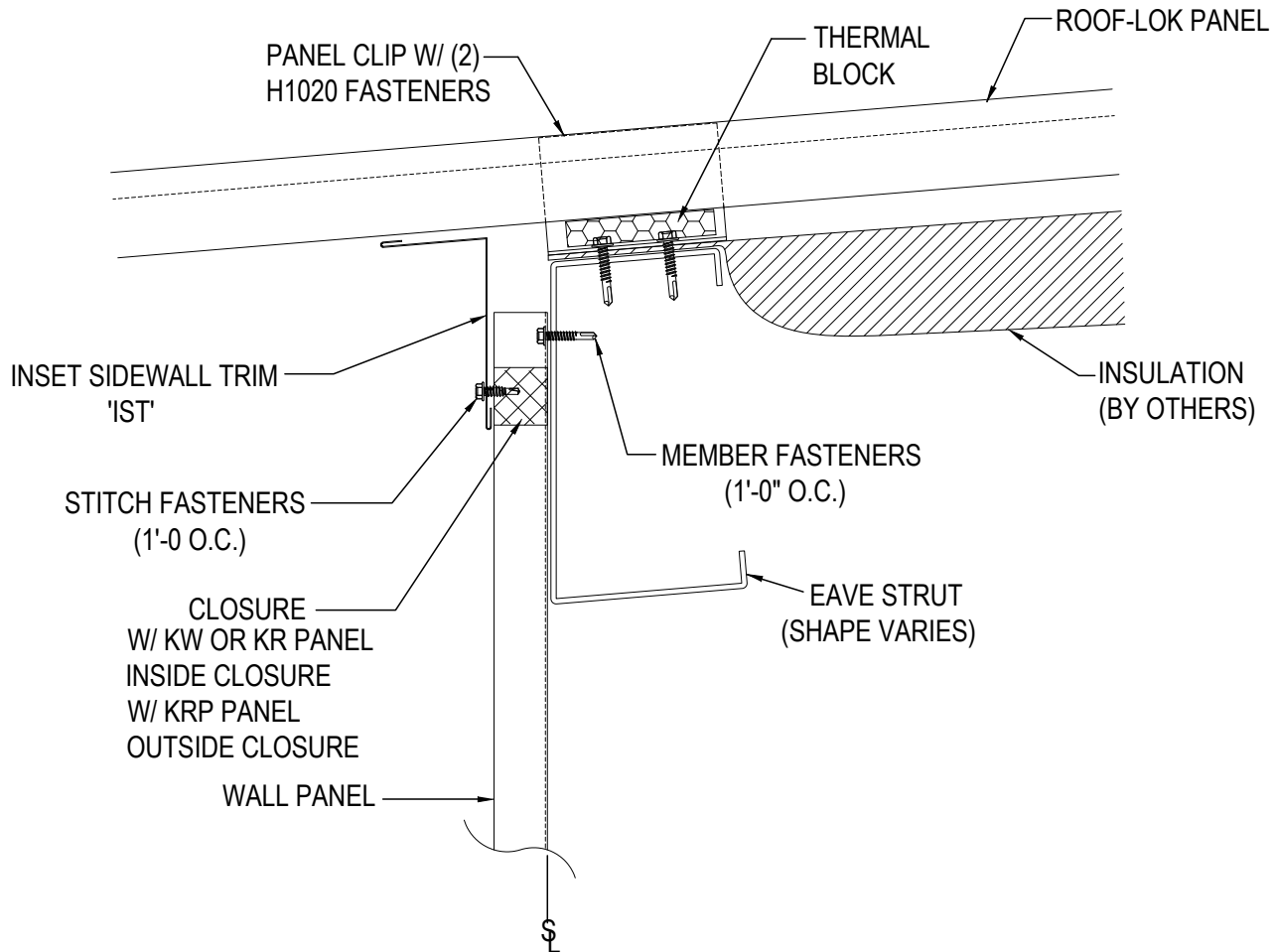


EO3011K - INSET EAVE, SHEETED WALL, W/O SOFFIT
EO3111K - INSET EAVE AT SHEETED WALL, W/ KR SOFFIT PANEL
EO3031K - EAVE EXTENSION W/ EAVE FASCIA, OPEN WALL W/O SOFFIT
EO3041K - EAVE EXTENSION W/ GUTTER, W/O SOFFIT
EO3046K - EAVE EXTENSION W/ GUTTER AND KR SOFFIT
EO3051K - EAVE EXTENSION, HIGH EAVE W/O SOFFIT
EO3056K - EAVE EXTENSION, HIGH EAVE W/ KR SOFFIT
EO3061K - RAKE EXTENSION W/O SOFFIT, STARTING DETAIL, ON MODULE
EO3062K - RAKE EXTENSION W/O SOFFIT, ENDING DETAIL ON MODULE
EO3063K - RAKE EXTENSION W/O SOFFIT, STARTING DETAIL, OFF MODULE
EO3064K - RAKE EXTENSION W/O SOFFIT, ENDING OFF MODULE
EO3066K - RAKE EXTENSION W/ KR SOFFIT, STARTING DETAIL, ON MODULE
EO3067K - RAKE EXTENSION W/ KR SOFFIT, ENDING ON MODULE
EO3068K - RAKE EXTENSION W/ KR SOFFIT, STARTING DETAIL, OFF MODULE
EO3069K - RAKE EXTENSION W/ KR SOFFIT, ENDING OFF MODULE

---

## EO3011K - INSET EAVE, SHEETED WALL, W/O SOFFIT



## INSET EAVE DETAIL

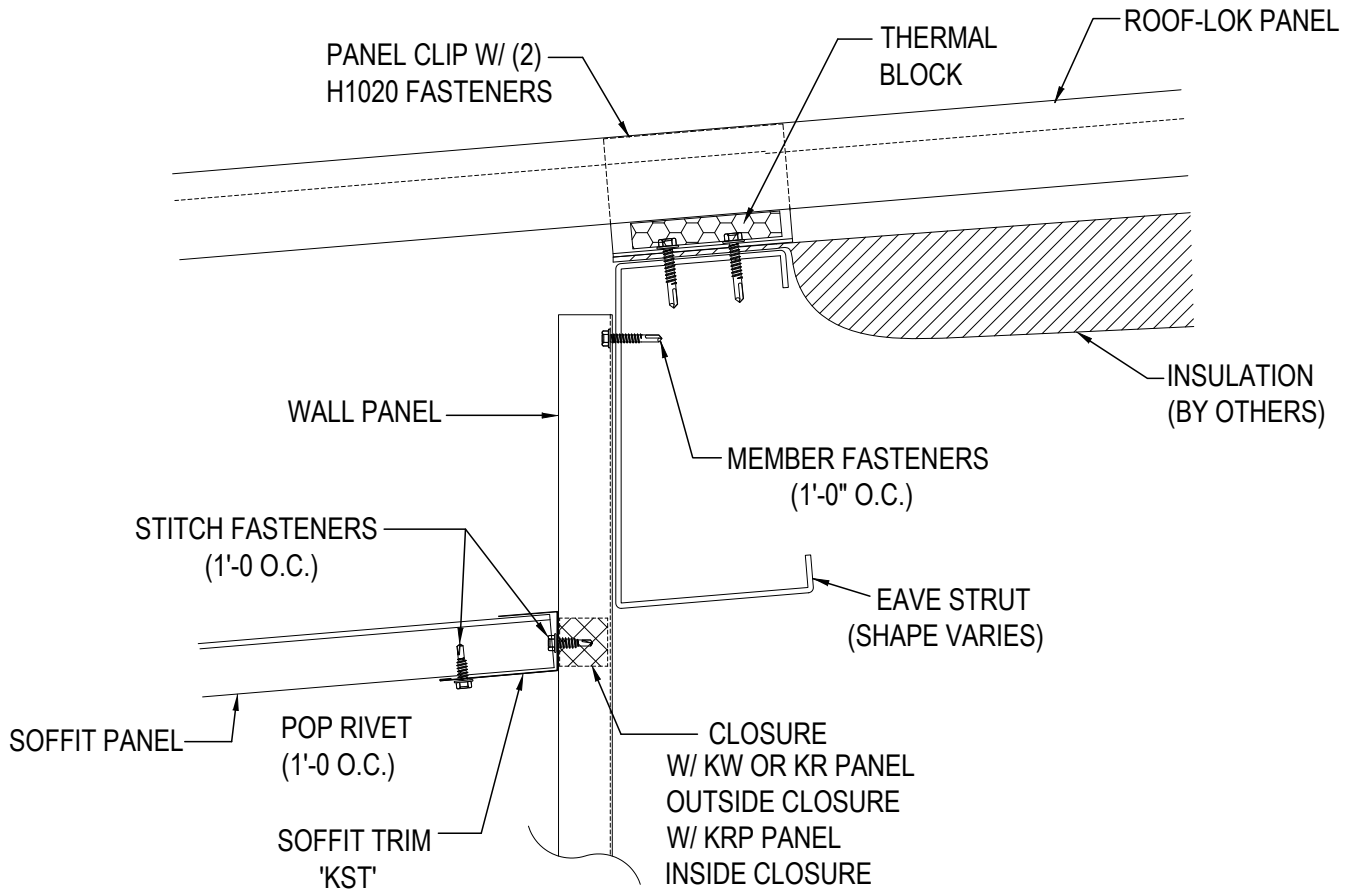
INSET EAVE AT SHEETED WALL W/O SOFFIT

**EO3011**

### Detailer Notes:

1) N/A

## EO3111K - INSET EAVE AT SHEETED WALL, W/ KR SOFFIT PANEL



## INSET EAVE DETAIL

INSET EAVE AT SHEETED WALL, W/ KR SOFFIT PANEL

**EO3111**

### Detailer Notes:

- 1) N/A

## EO3031K - EAVE EXTENSION W/ EAVE FASCIA, OPEN WALL W/O SOFFIT

A = 4" ON SLOPES UP TO 2:12

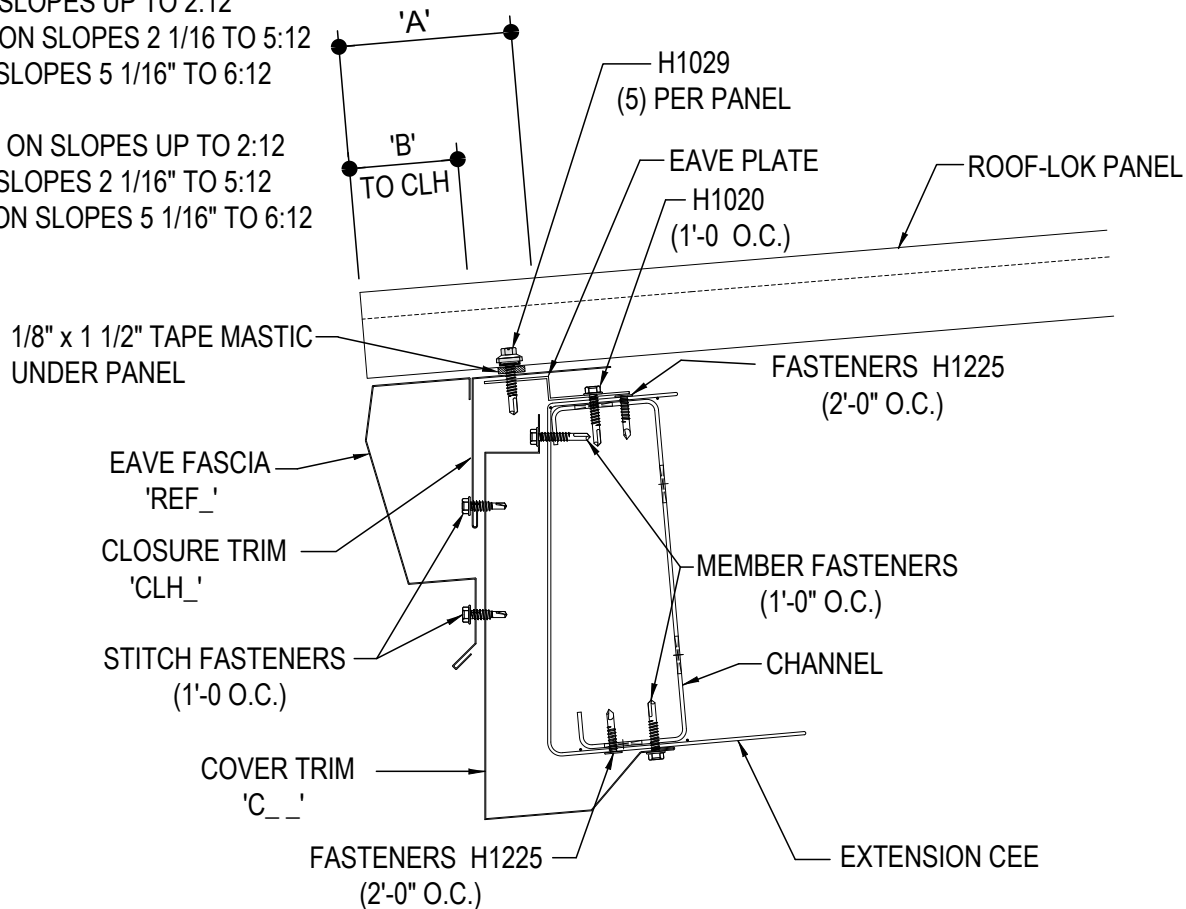
5 1/2" ON SLOPES 2 1/16 TO 5:12

7" ON SLOPES 5 1/16" TO 6:12

B = 2 9/16" ON SLOPES UP TO 2:12

4" ON SLOPES 2 1/16" TO 5:12

5 1/2" ON SLOPES 5 1/16" TO 6:12



## EAVE EXTENSION LOW EAVE

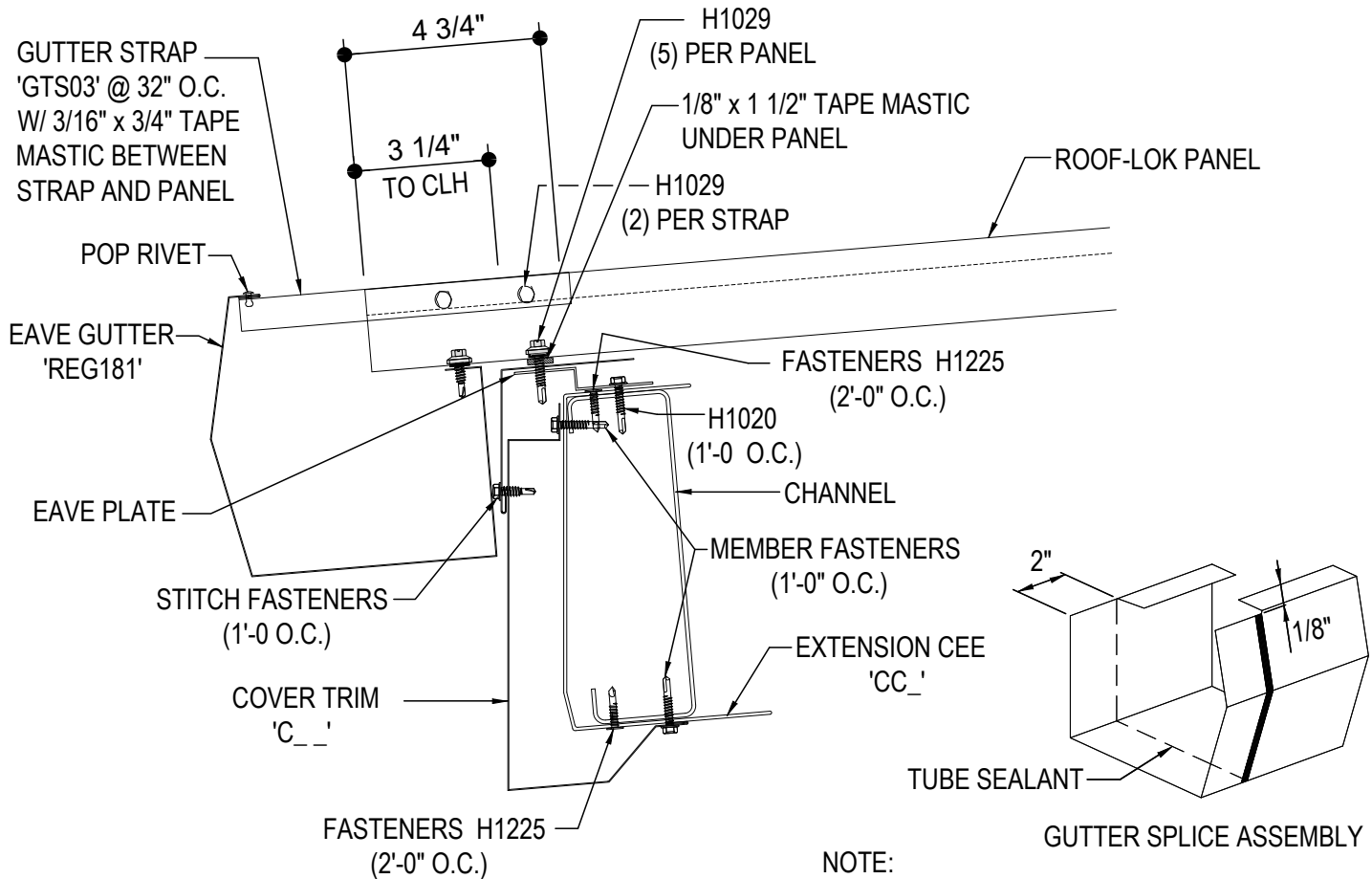
EAVE EXTENSION W/ EAVE FASCIA TRIM OPEN W/O SOFFIT

**EO3031**

### Detailer Notes:

1) N/A

## EO3041K - EAVE EXTENSION W/ GUTTER, W/O SOFFIT



### NOTE:

1. FIELD TRIM BOTH FLANGES OF INSIDE GUTTER SECTION AS SHOWN.
2. APPLY 1/4" BEAD OF SEALANT 2" FROM OUTER EDGE ON OUTER SECTION.
3. PLACE GUTTER SCETIONS TOGETHER WITH A 2" LAP.
4. SECURE GUTTER SECTIONS TOGETHER WITH POP RIVETS.

## EAVE GUTTER DETAIL

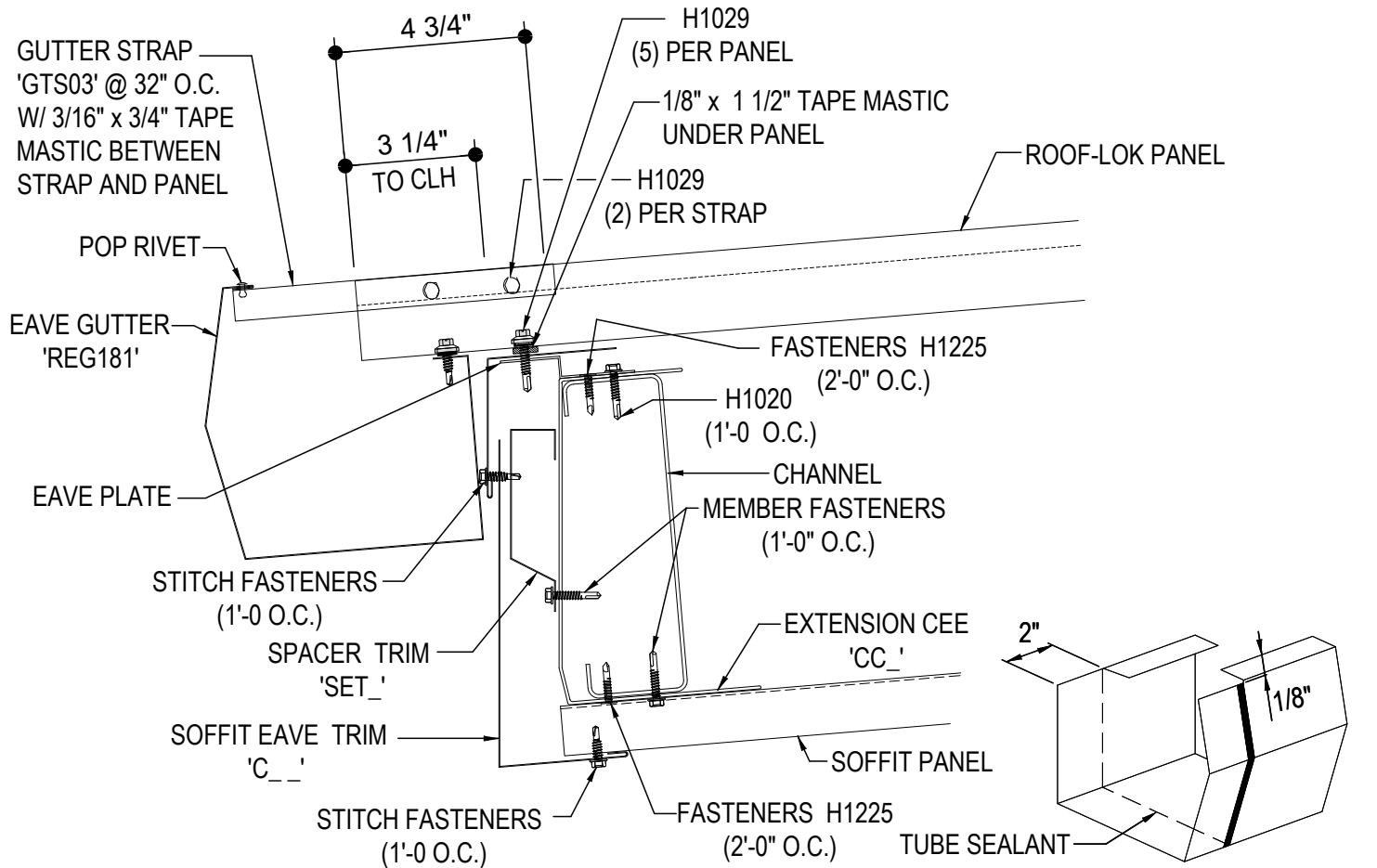
EAVE EXTENSION W/ EAVE GUTTER, OPEN W/O SOFFIT

**EO3041**

### Detailer Notes:

- 1) N/A

## EO3046K - EAVE EXTENSION W/ GUTTER AND KR SOFFIT



GUTTER SPLICE ASSEMBLY

### NOTE:

1. FIELD TRIM BOTH FLANGES OF INSIDE GUTTER SECTION AS SHOWN.
2. APPLY 1/4" BEAD OF SEALANT 2" FROM OUTER EDGE ON OUTER SECTION.
3. PLACE GUTTER SCCTIONS TOGETHER WITH A 2" LAP.
4. SECURE GUTTER SECTIONS TOGETHER WITH POP RIVETS.

## EAVE GUTTER DETAIL

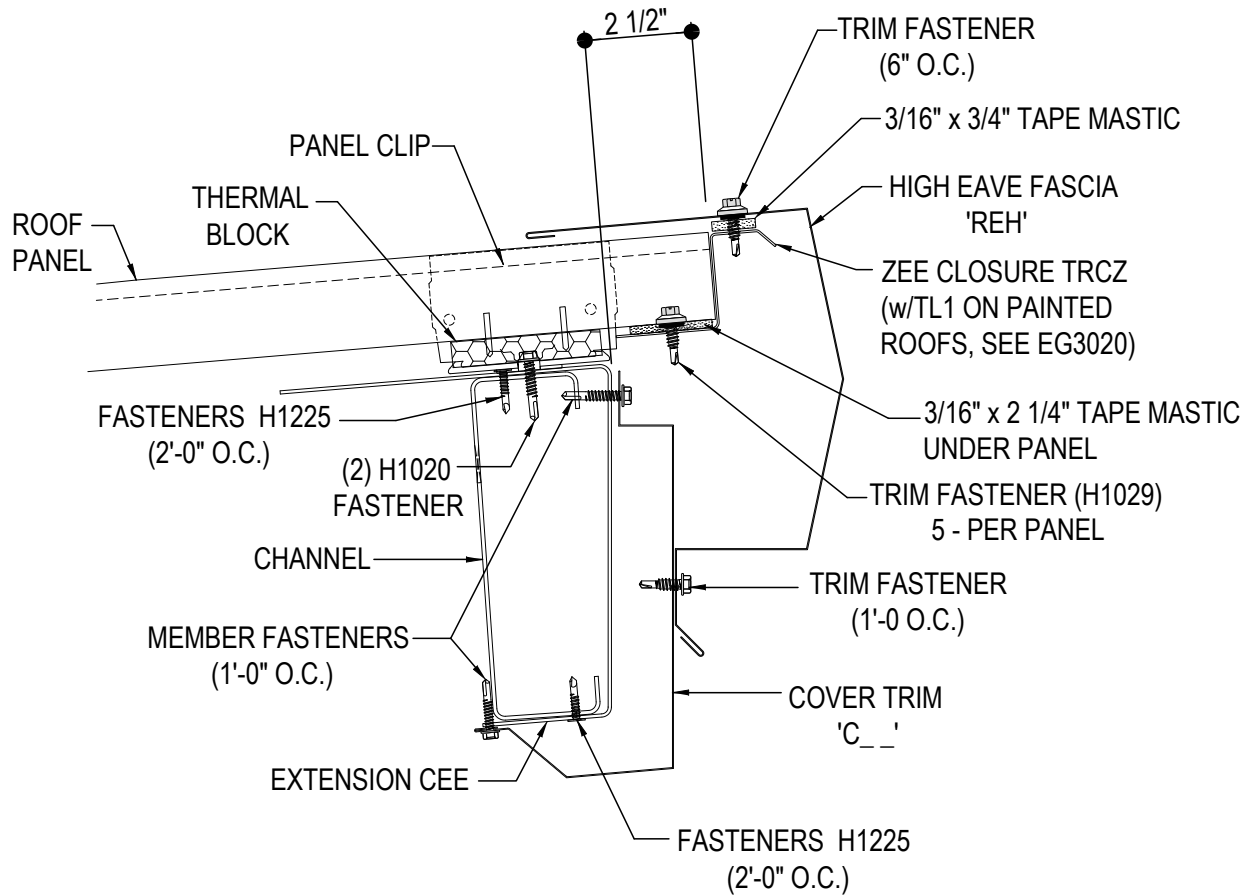
EAVE EXTENSION W/ EAVE GUTTER AND KR SOFFIT

**EO3046**

### Detailer Notes:

- 1) N/A

EO3051K - EAVE EXTENSION, HIGH EAVE W/O SOFFIT



## EAVE EXTENSION DETAIL

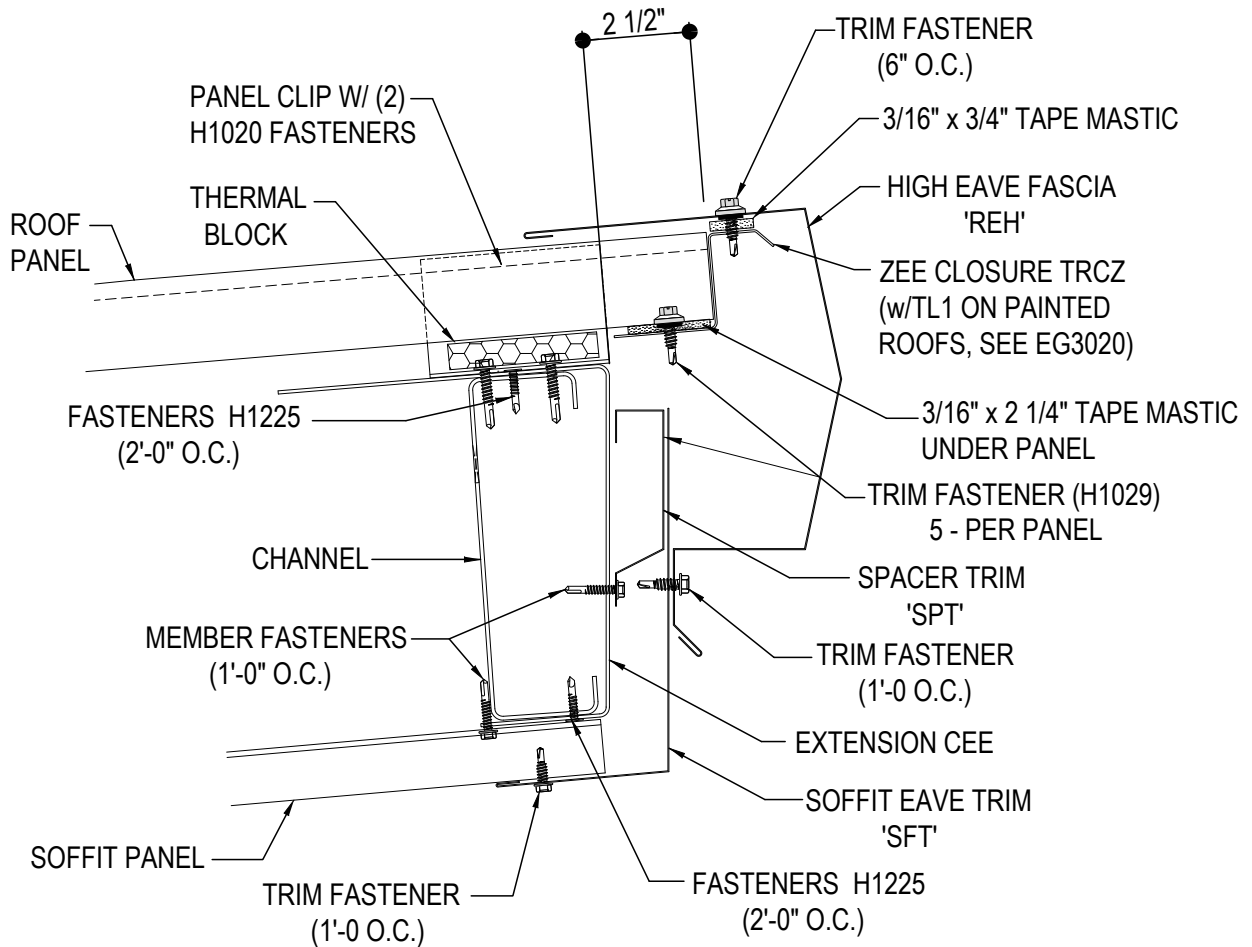
EAVE EXTENSION, HIGH EAVE W/O SOFFIT

**EO3051**

### Detailer Notes:

1) N/A

EO3056K - EAVE EXTENSION, HIGH EAVE W/ KR SOFFIT



## EAVE EXTENSION DETAIL

EAVE EXTENSION, HIGH EAVE W/ KR SOFFIT

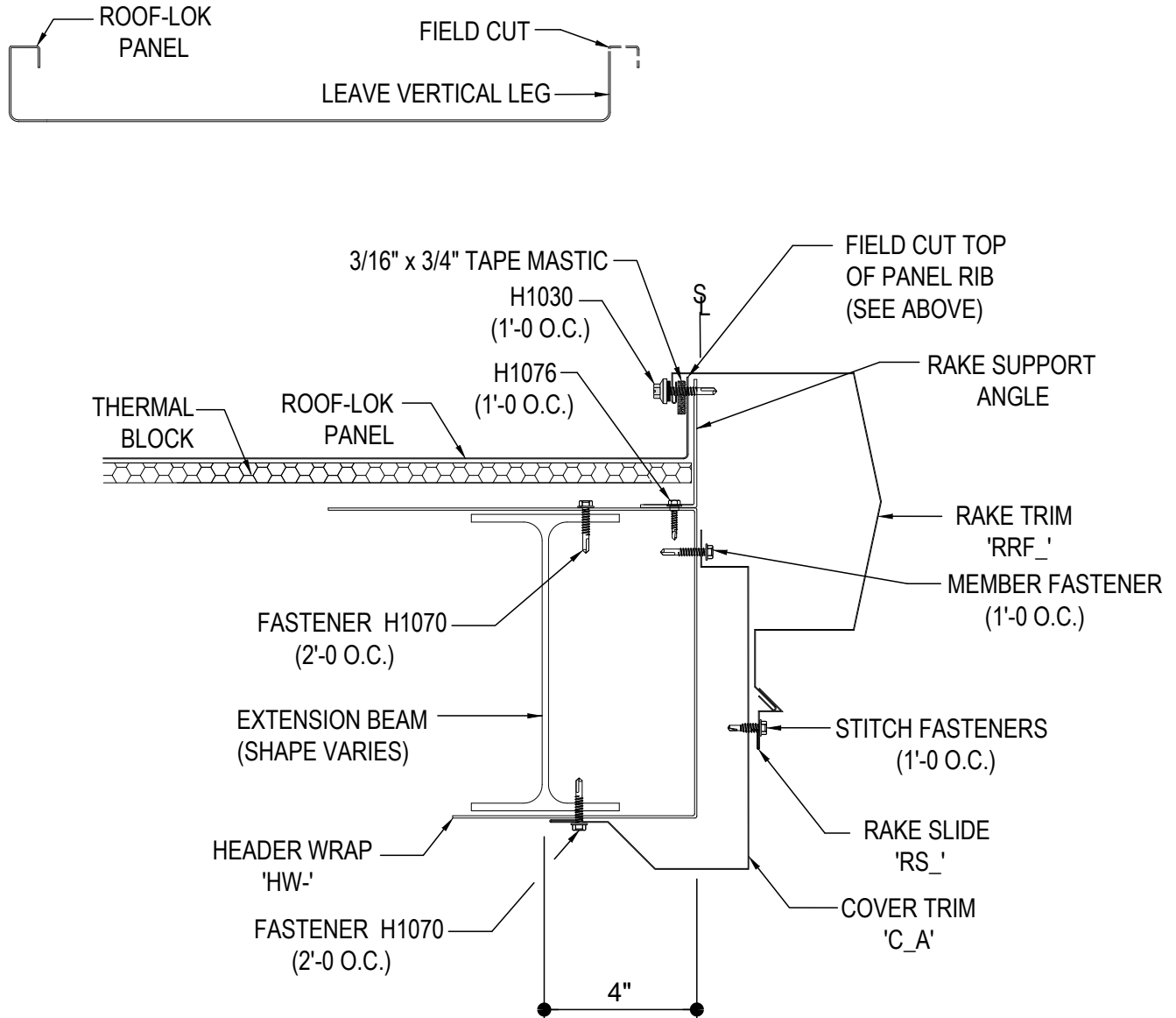
**EO3056**

Detailer Notes:

1) N/A



## EO3061K - RAKE EXTENSION W/O SOFFIT, STARTING DETAIL, ON MODULE



## RAKE EXTENSION DETAIL

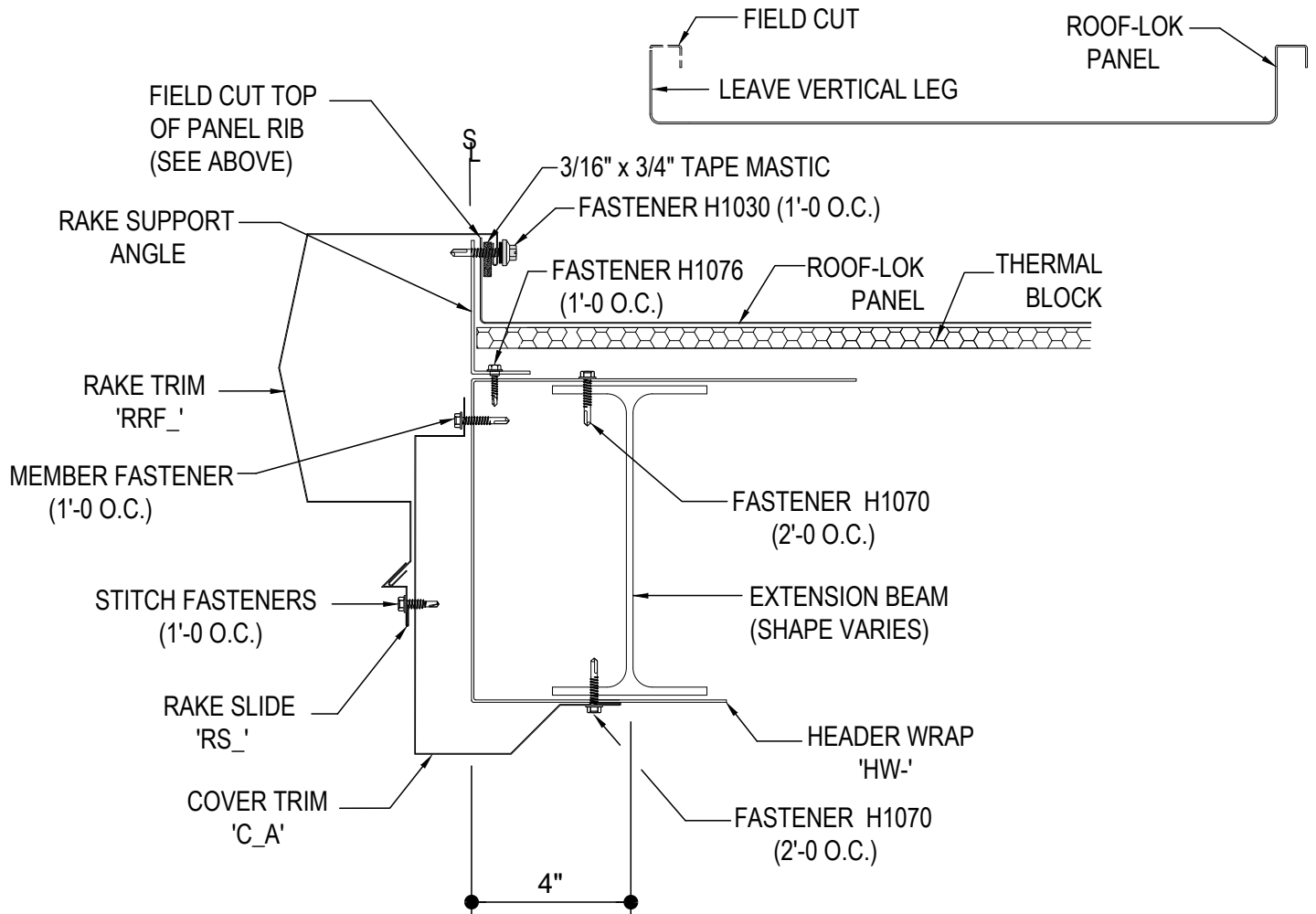
RAKE EXTENSION W/O SOFFIT, STARTING ON MODULE

**EO3061**

### Detailer Notes:

1) N/A

## EO3062K - RAKE EXTENSION W/O SOFFIT, ENDING DETAIL ON MODULE



## RAKE EXTENSION DETAIL

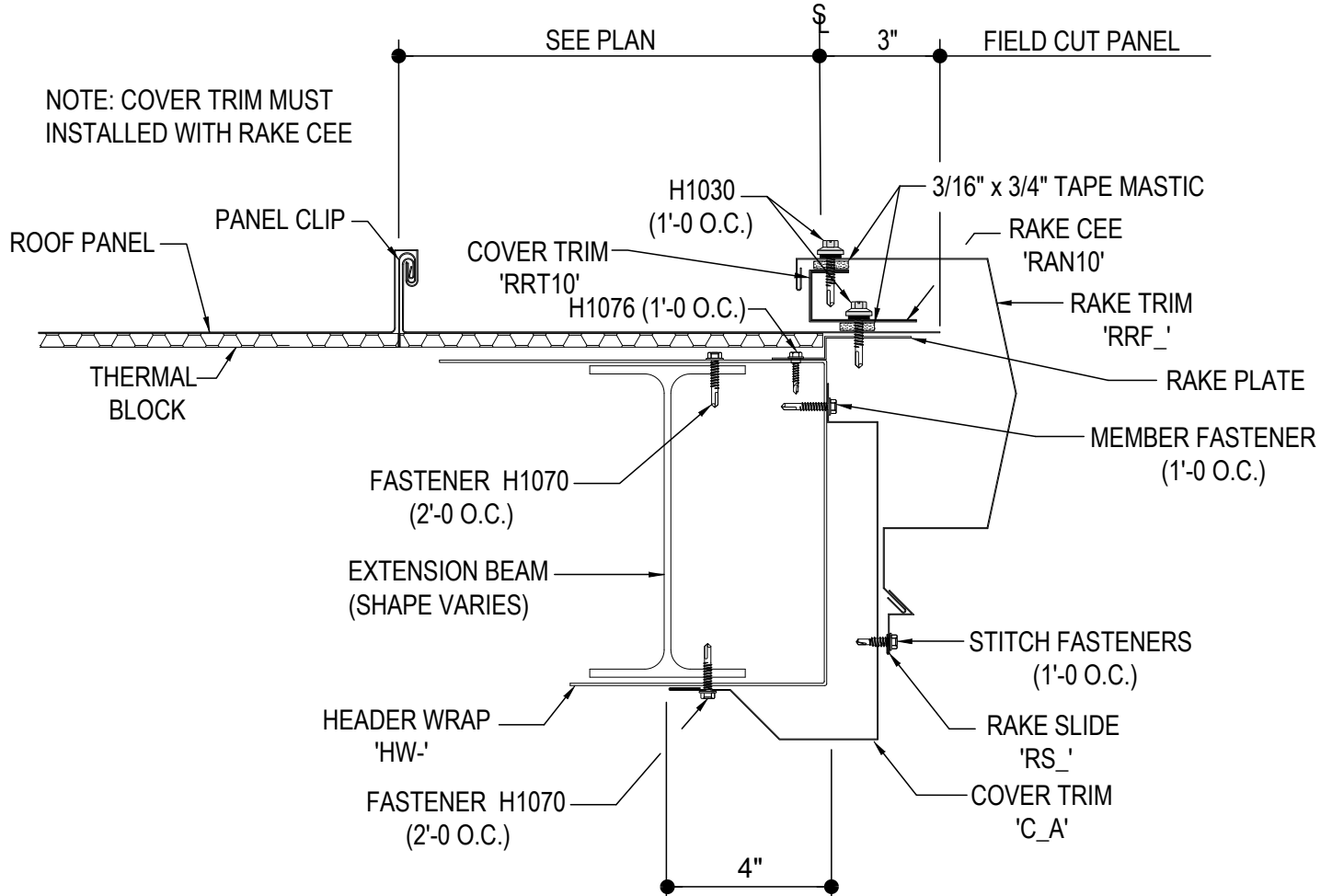
RAKE EXTENSION W/O SOFFIT, ENDING DETAIL ON MODULE

EO3062

### Detailer Notes:

- 1) N/A

## EO3063K - RAKE EXTENSION W/O SOFFIT, STARTING DETAIL, OFF MODULE



## RAKE EXTENSION DETAIL

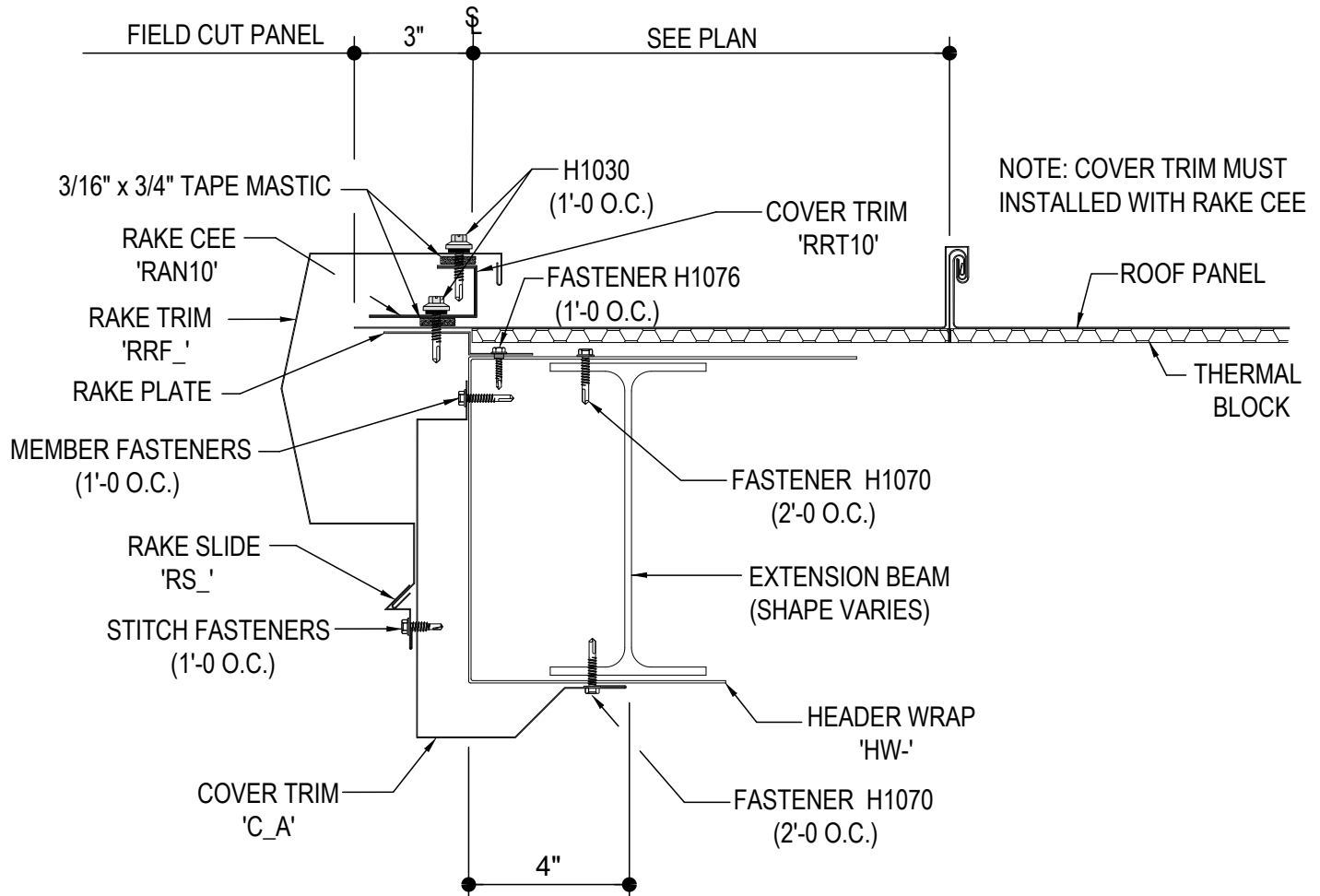
RAKE EXTENSION W/O SOFFIT, STARTING OFF MODULE

**EO3063**

### Detailer Notes:

- 1) N/A

## EO3064K - RAKE EXTENSION W/O SOFFIT, ENDING OFF MODULE



## RAKE EXTENSION DETAIL

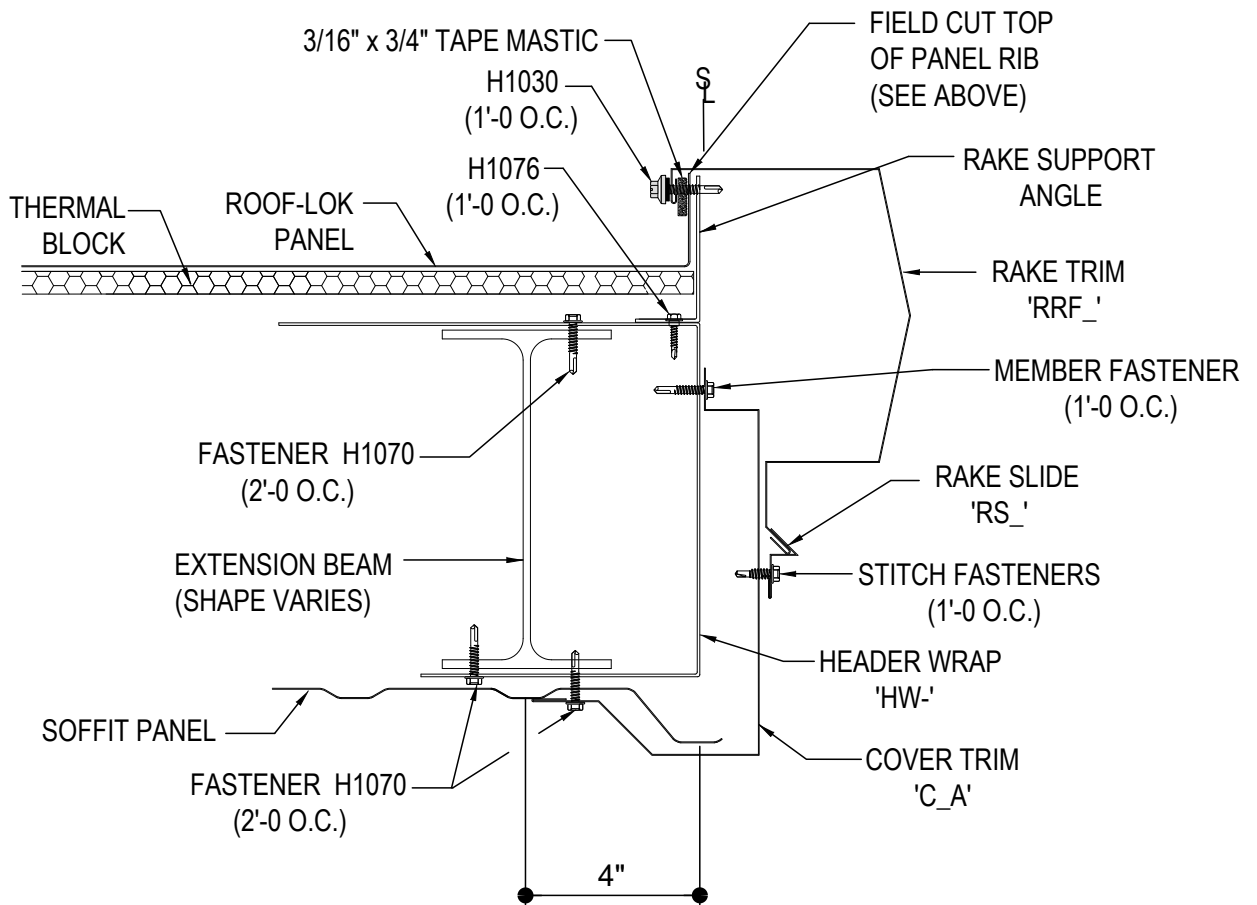
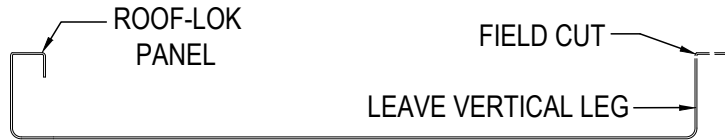
RAKE EXTENSION W/O SOFFIT, ENDING OFF MODULE

EO3064

### Detailer Notes:

- 1) N/A

## EO3066K - RAKE EXTENSION W/ KR SOFFIT, STARTING DETAIL, ON MODULE



## RAKE EXTENSION DETAIL

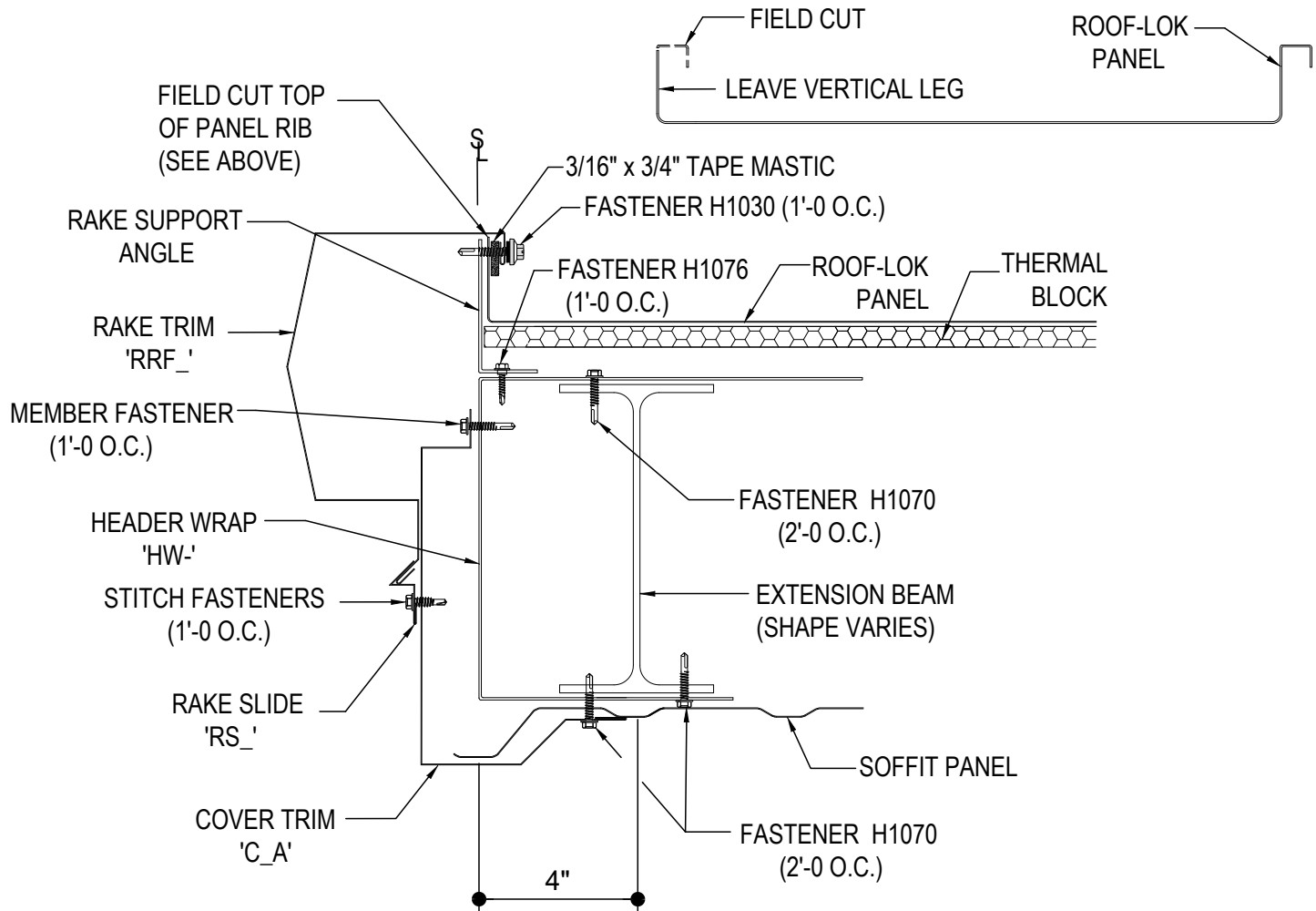
RAKE EXTENSION, STARTING DETAIL, ON MODULE, W/ KR SOFFIT

**EO3066**

### Detailer Notes:

1) N/A

## EO3067K - RAKE EXTENSION W/ KR SOFFIT, ENDING ON MODULE



## RAKE EXTENSION DETAIL

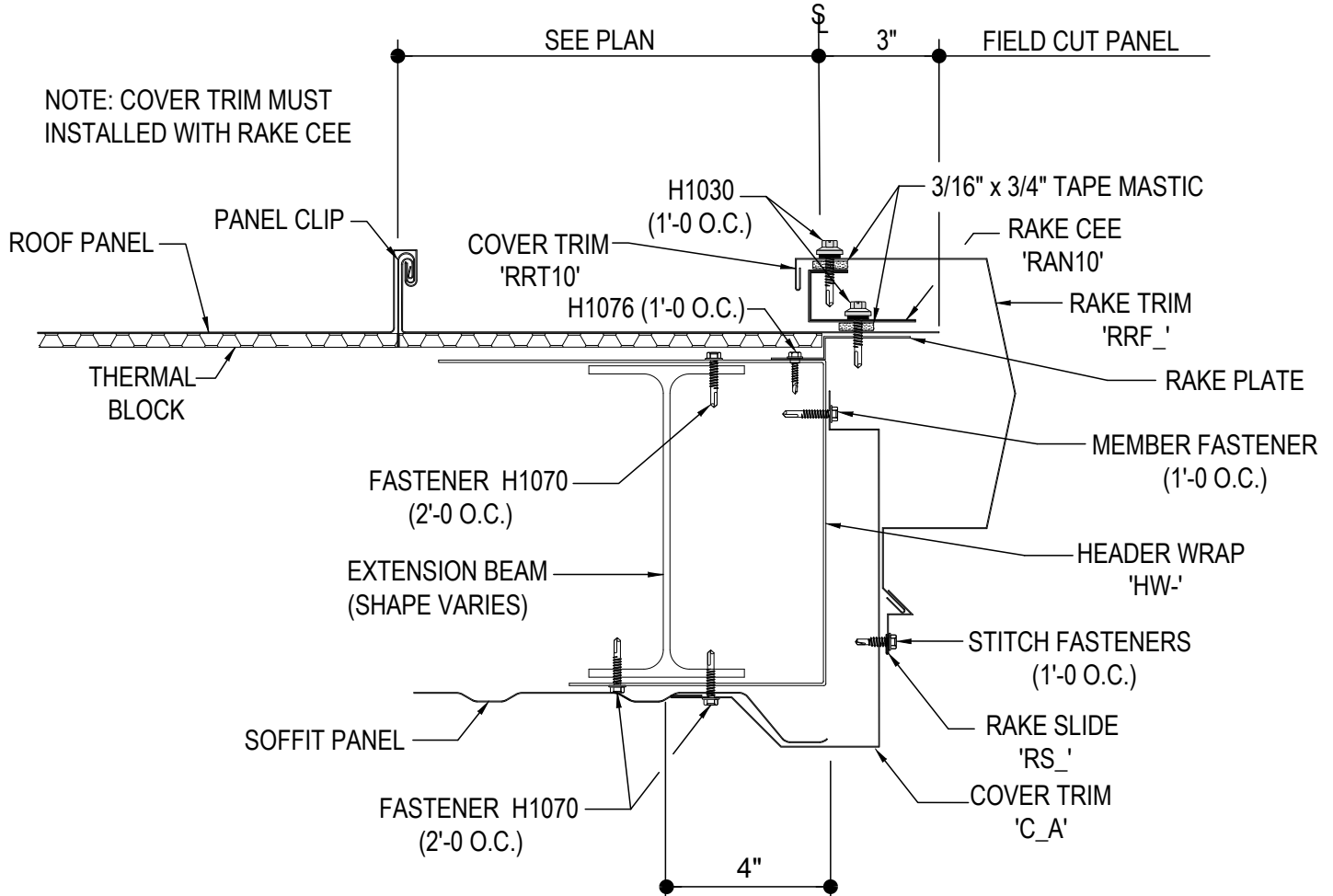
RAKE EXTENSION W/ KR SOFFIT, ENDING ON MODULE

EO3067

### Detailer Notes:

1) N/A

## EO3068K - RAKE EXTENSION W/ KR SOFFIT, STARTING DETAIL, OFF MODULE



## RAKE EXTENSION DETAIL

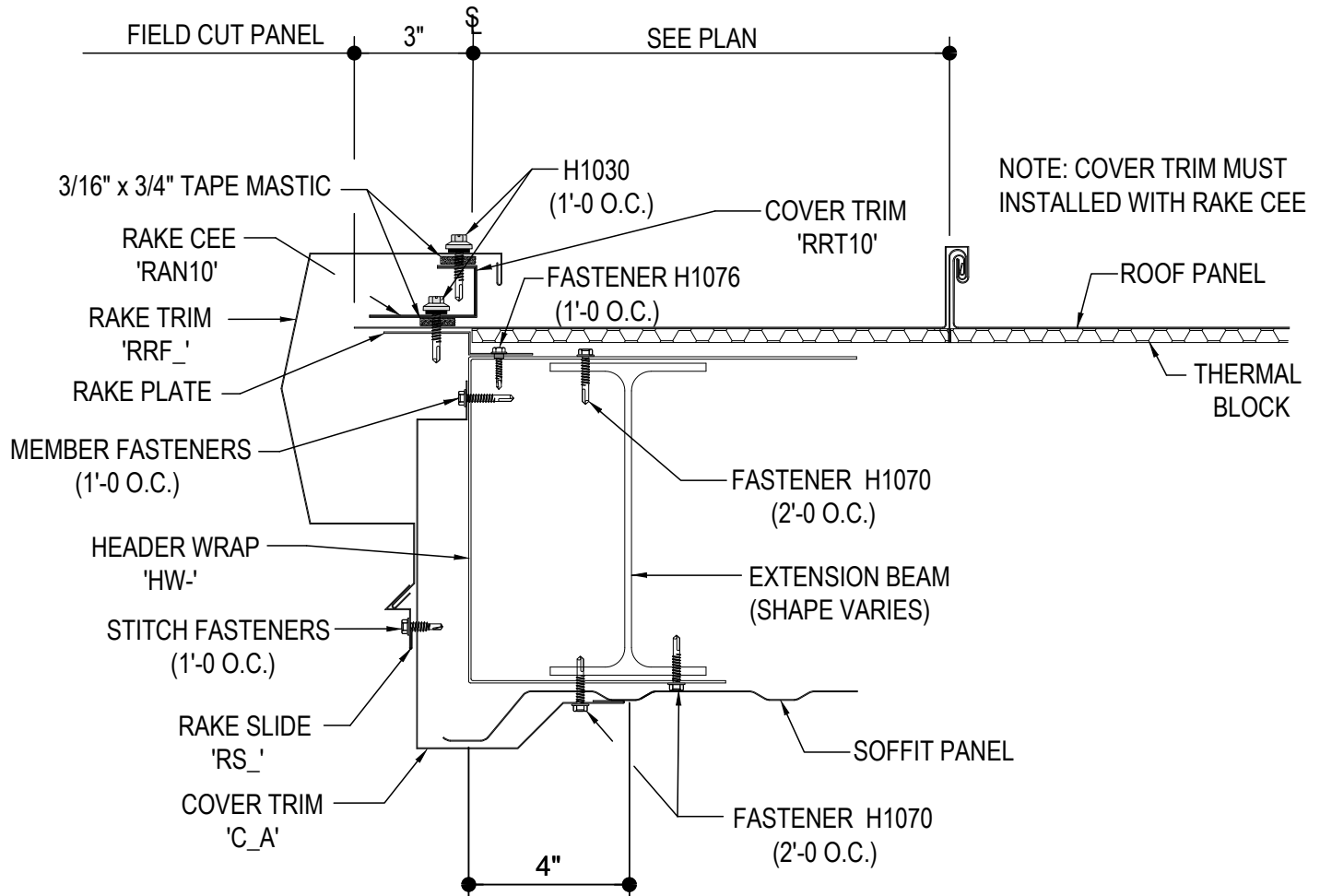
RAKE EXTENSION W/ KR SOFFIT, STARTING OFF MODULE

**EO3068**

### Detailer Notes:

- 1) N/A

## EO3069K - RAKE EXTENSION W/ KR SOFFIT, ENDING OFF MODULE



## RAKE EXTENSION DETAIL

RAKE EXTENSION W/ KR SOFFIT, ENDING OFF MODULE

EO3069

### Detailer Notes:

- 1) N/A