

## **Support by Existing**

BJ0028 - 8" or 9.5" Purlins w/ Transition Zee  
BJ0029 - 12" Purlins w/ Transition Zee  
BJ0031 - 8" or 9.5" Purlins w/ Support Channel  
BJ0032 - 12" Purlins w/ Support Channel  
BJ0035 - 8" or 9.5" Purlins w/ Clip  
BJ0036 - 12" Purlins w/ Clip  
BJ0135 - 8" GSM Purlin to 8" Purlin w/ Clip  
BJ1135 - 9.5" GSM Purlin to 9.5" Purlin w/ Clip  
BJ0235 - 8" KBS Purlin to 8" Purlin w/ Clip  
BJ1235 - 9.5" KBS Purlin to 9.5" Purlin w/ Clip  
BJ2235 - 12" KBS Purlin to 12" Purlin w/ Clip

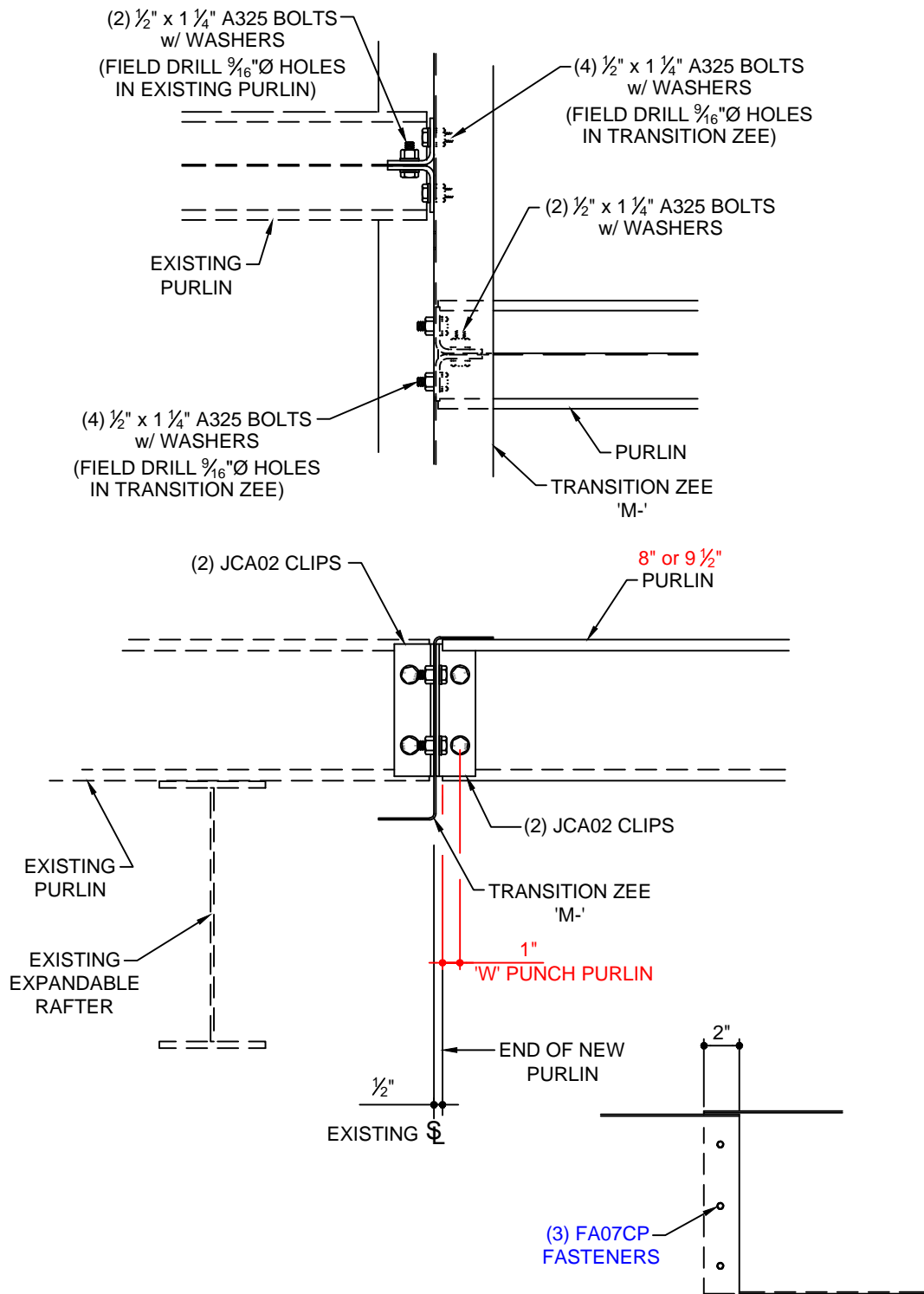
## **Support by New KBS Structure**

BJ0038 - 8" or 9.5" Purlins w/ Transition Zee  
BJ0039 - 12" Purlins w/ Transition Zee  
BJ0041 - 8" or 9.5" Purlins w/ Support Channel  
BJ0042 - 12" Purlins w/ Support Channel  
BJ0045 - 8" or 9.5" Purlins w/ Clip  
BJ0046 - 12" Purlins w/ Clip  
BJ0145 - 8" GSM Purlin to 8" Purlin w/ Clip  
BJ1145 - 9.5" GSM Purlin to 9.5" Purlin w/ Clip  
BJ0245 - 8" KBS Purlin to 8" Purlin w/ Clip  
BJ1245 - 9.5" KBS Purlin to 9.5" Purlin w/ Clip  
BJ2245 - 12" KBS Purlin to 12" Purlin w/ Clip

## **Eave Strut Support**

BJ0071 - 8" or 9.5" ES Support by Existing  
BJ0072 - 12" ES Support by Existing  
BJ0081 - 8" or 9.5" ES Support by KBS  
BJ0082 - 12" ES Support by KBS

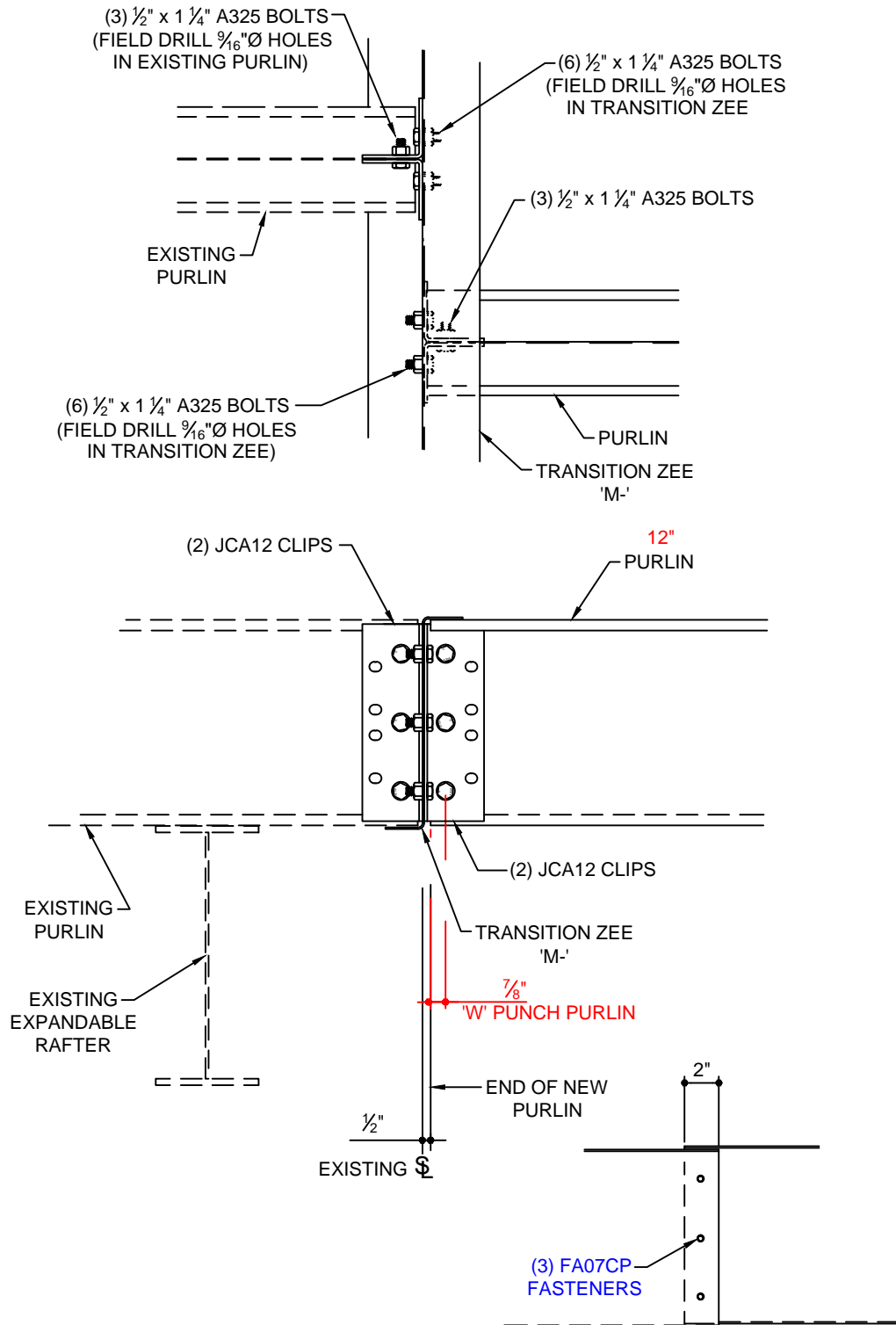
---



BJ0028K

**TRANSITION ZEE LAP DETAIL**

**TIE-IN TO EXISTING PURLIN WITH TRANSITION ZEE  
SUPPORTED BY EXISTING (8" or 9  $\frac{1}{2}$ " PURLINS)**

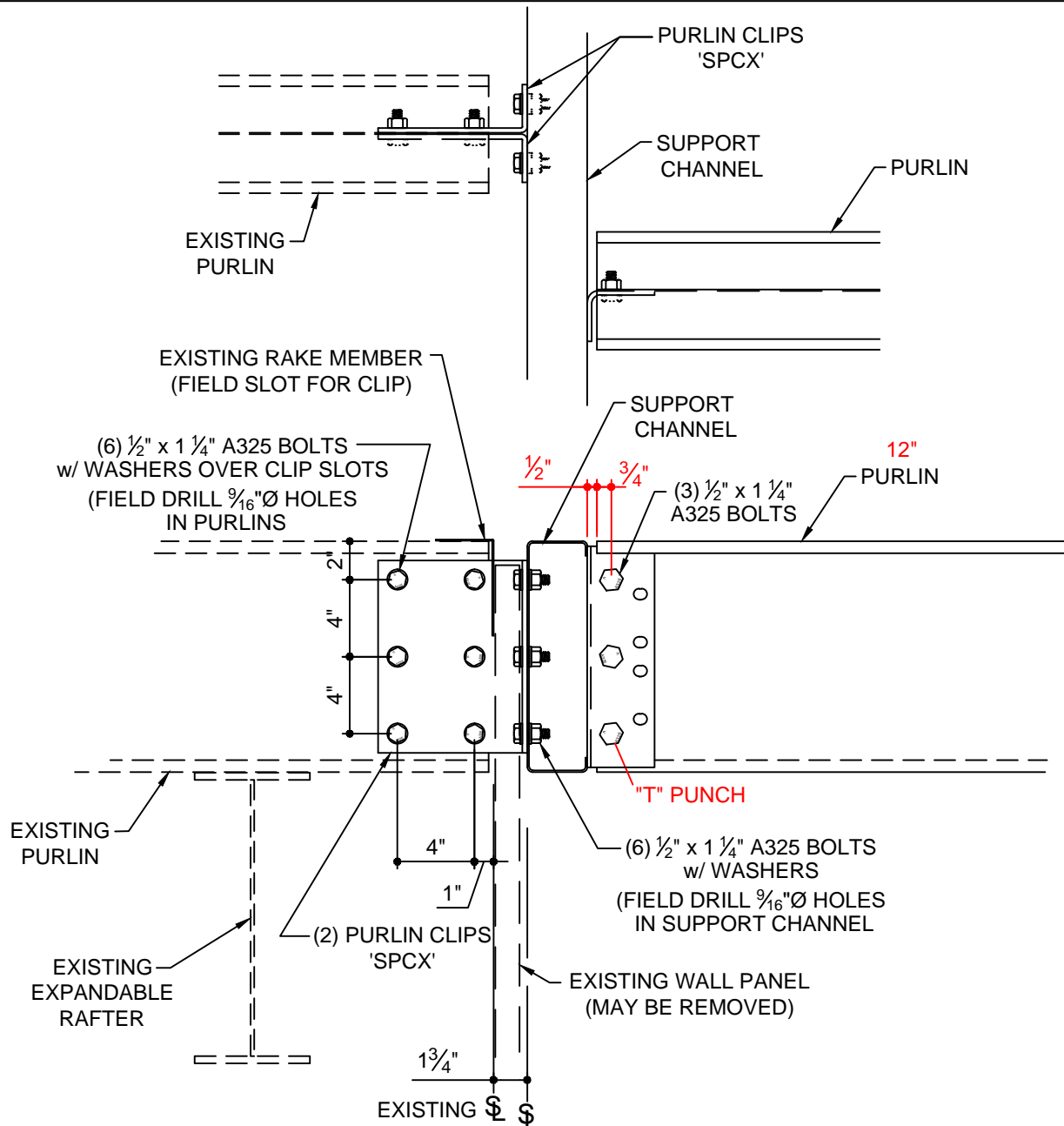


BJ0029K

TRANSITION ZEE LAP DETAIL

TIE-IN TO EXISTING PURLIN WITH TRANSITION ZEE  
SUPPORTED BY EXISTING (12" PURLINS)



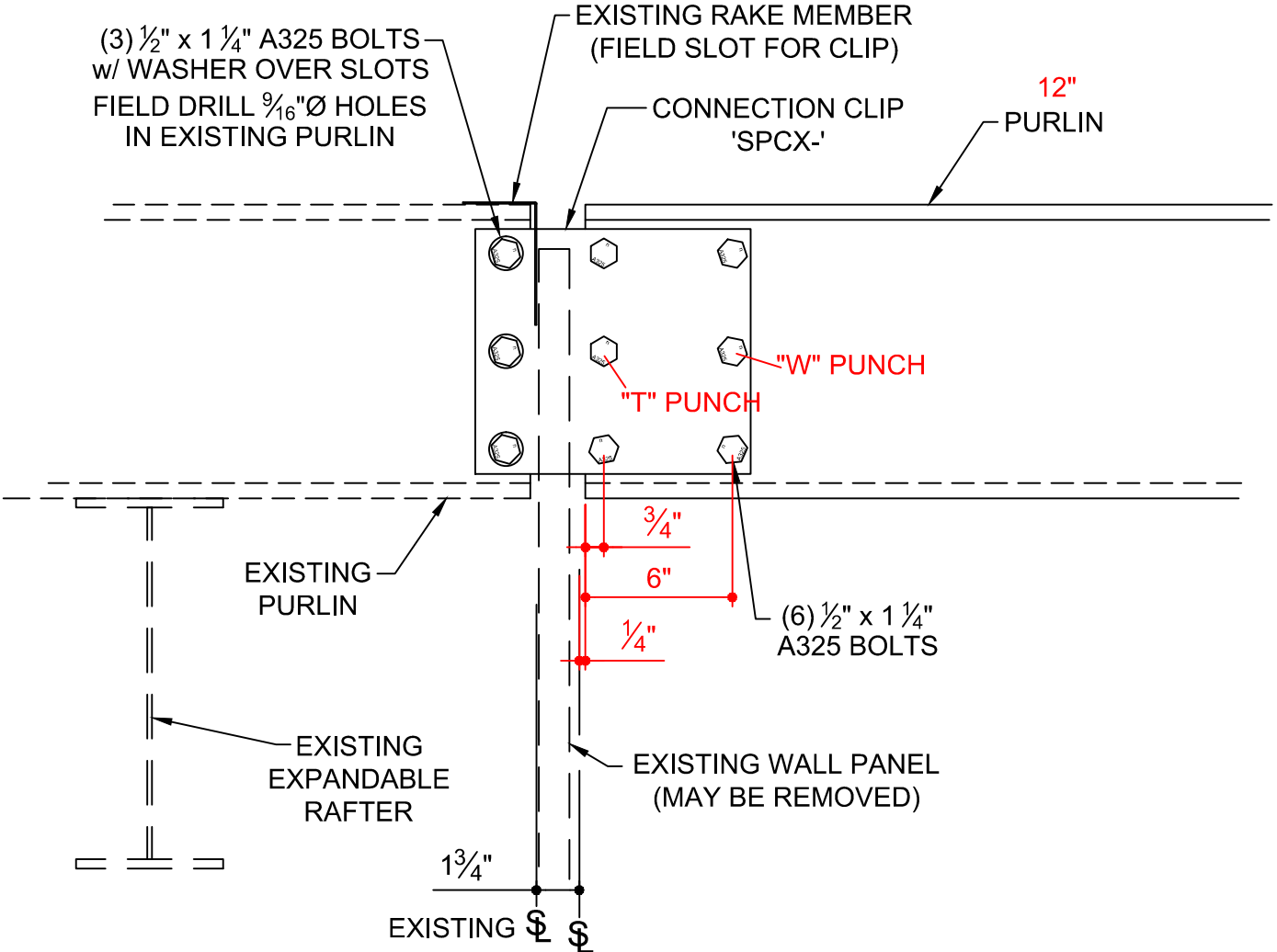
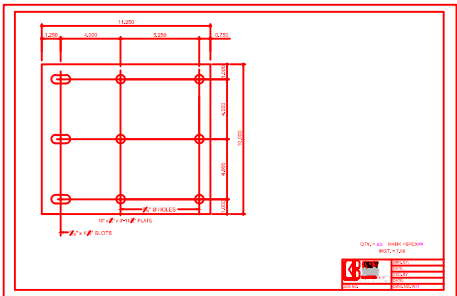


BJ0032K

TIE-IN TO EXISTING PURLIN WITH SUPPORT  
CHANNEL SUPPORTED BY EXISTING

**BEFORE USING THIS DETAIL VERIFY WITH  
THE DESIGN ENGINEER THAT THE  
CONNECTION WILL BE ADEQUATE**

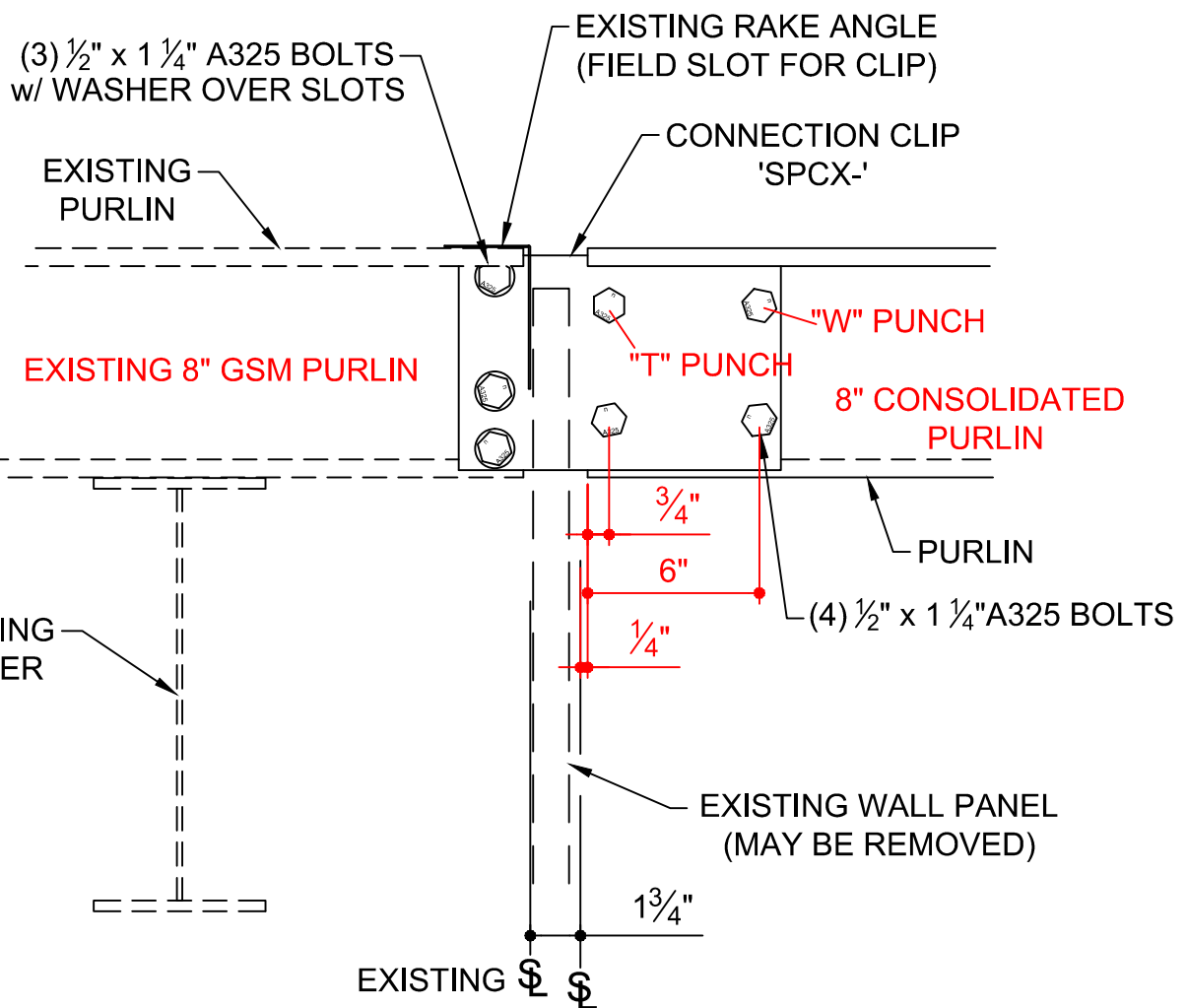




BJ0036K

TIE-IN TO EXISTING PURLIN WITH CLIP  
EXISTING SUPPORTED BY KBS

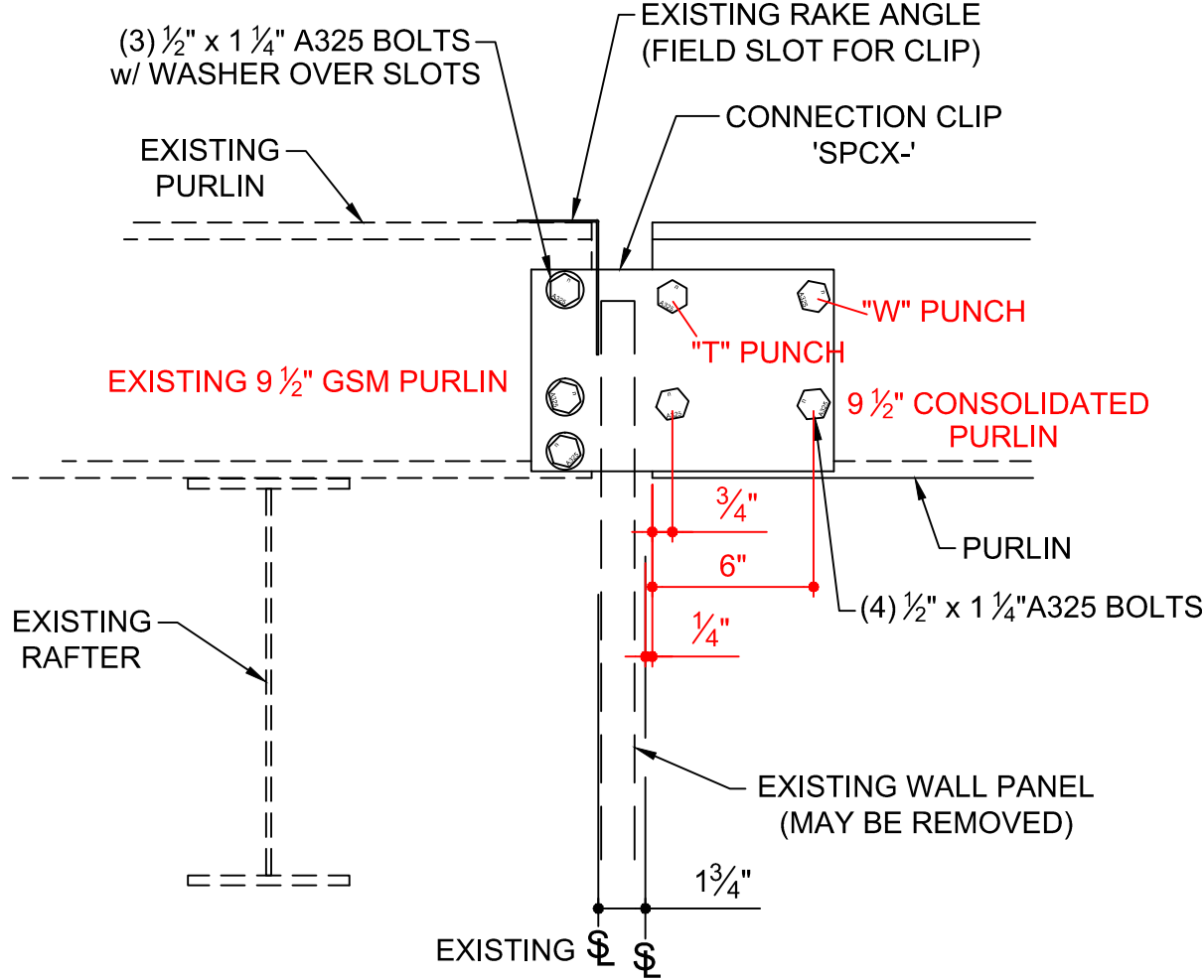
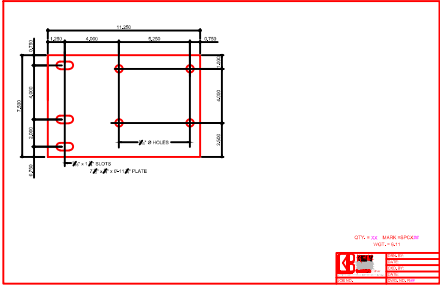
## BJ



**8" CONSOLIDATED PURLIN TO 8"  
EXISTING GSM PURLIN w/CLIP**



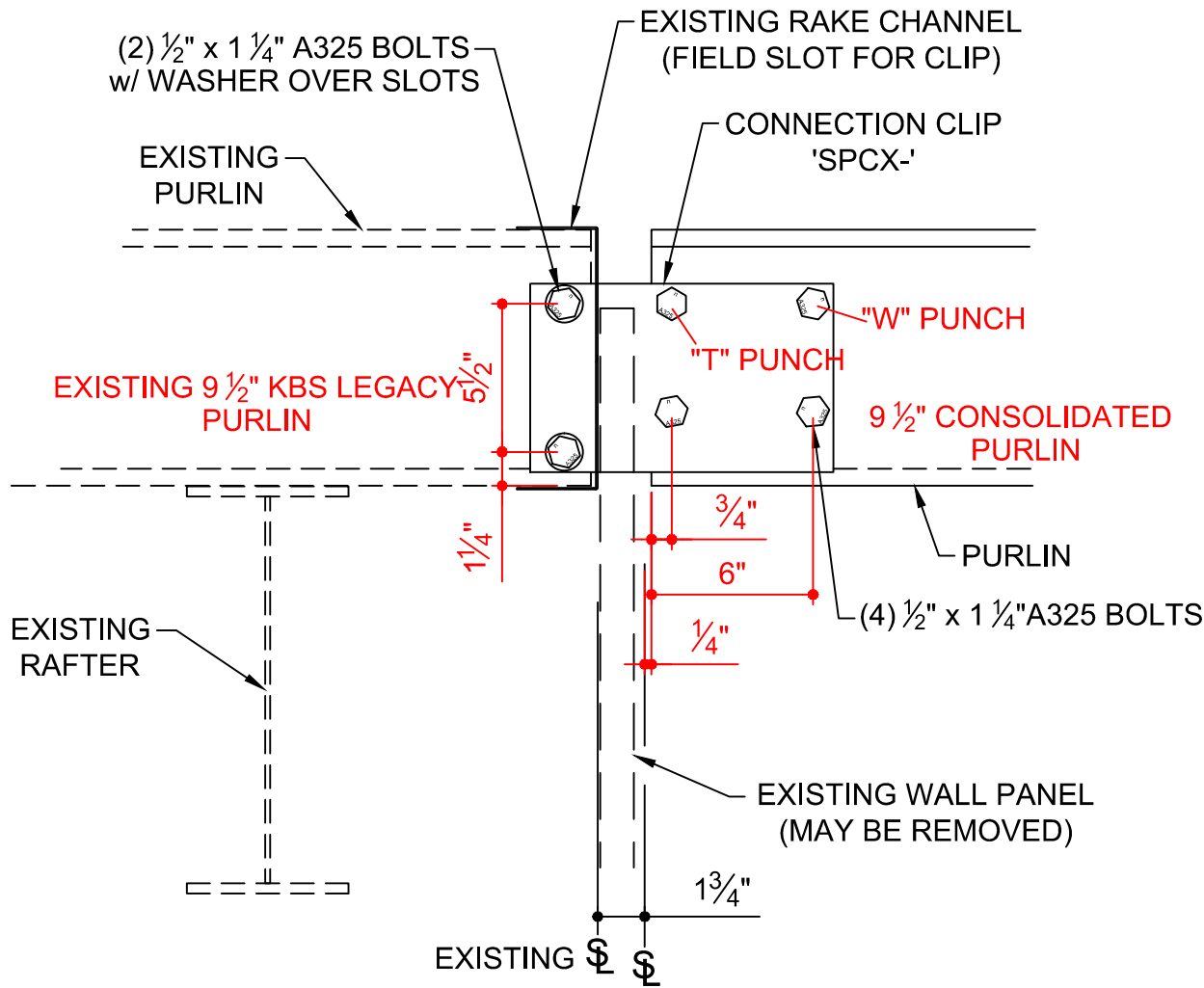
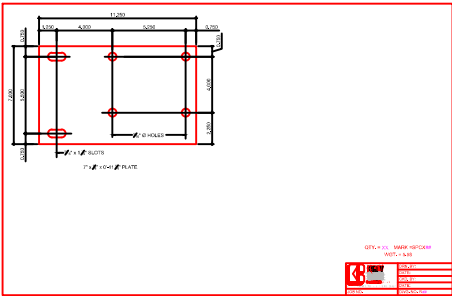




BJ1135K

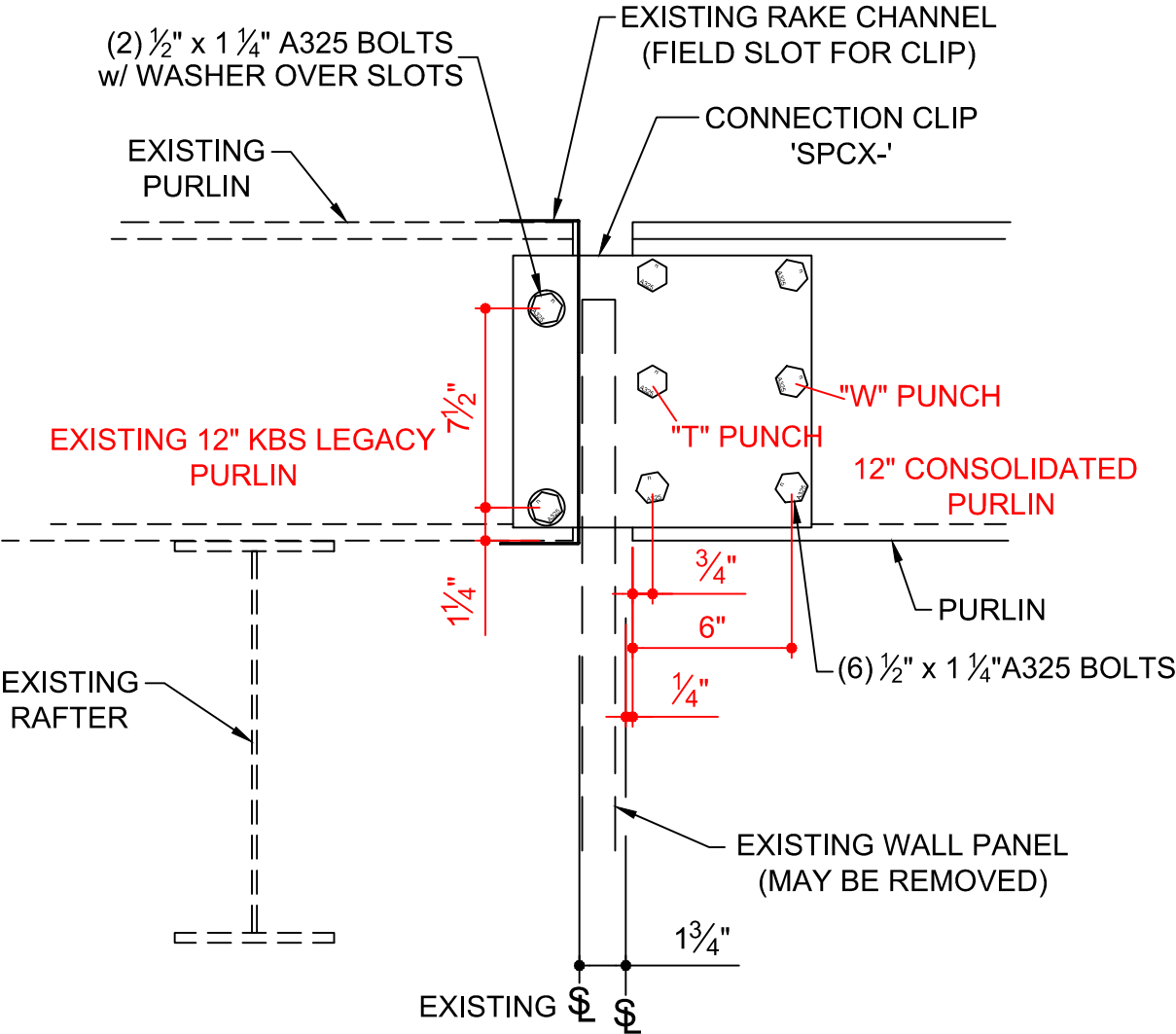
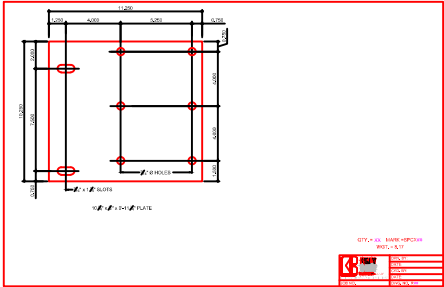
9 1/2" CONSOLIDATED PURLIN TO 9 1/2" EXISTING GSM PURLIN w/CLIP

## BJ



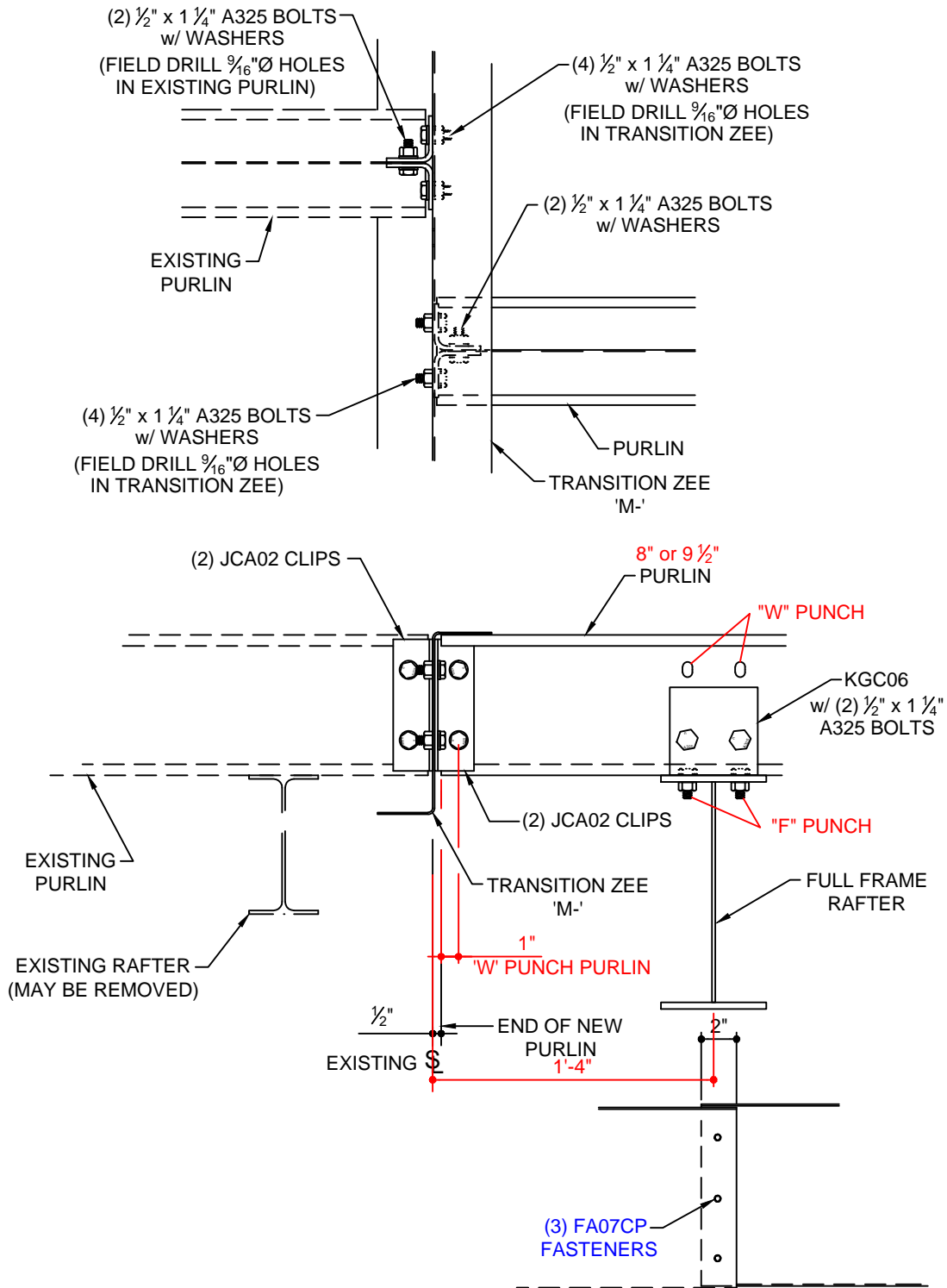
BJ1235K

9 1/2" CONSOLIDATED PURLIN TO 9 1/2" EXISTING KBS LEGACY PURLIN w/CLIP



BJ2235K

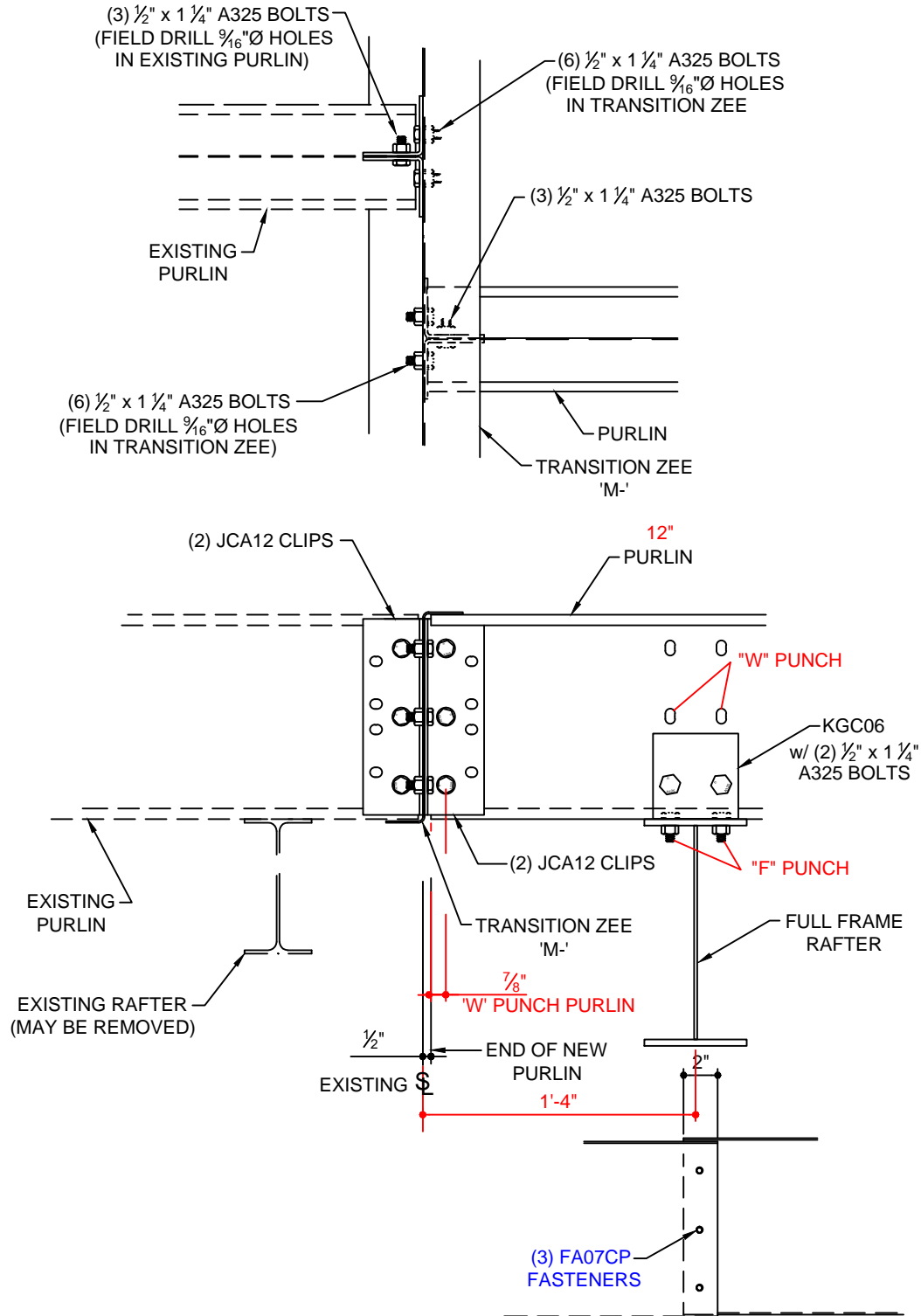
12" CONSOLIDATED PURLIN TO 12"  
EXISTING KBS LEGACY PURLIN w/CLIP



BJ0038K

**TRANSITION ZEE LAP DETAIL**

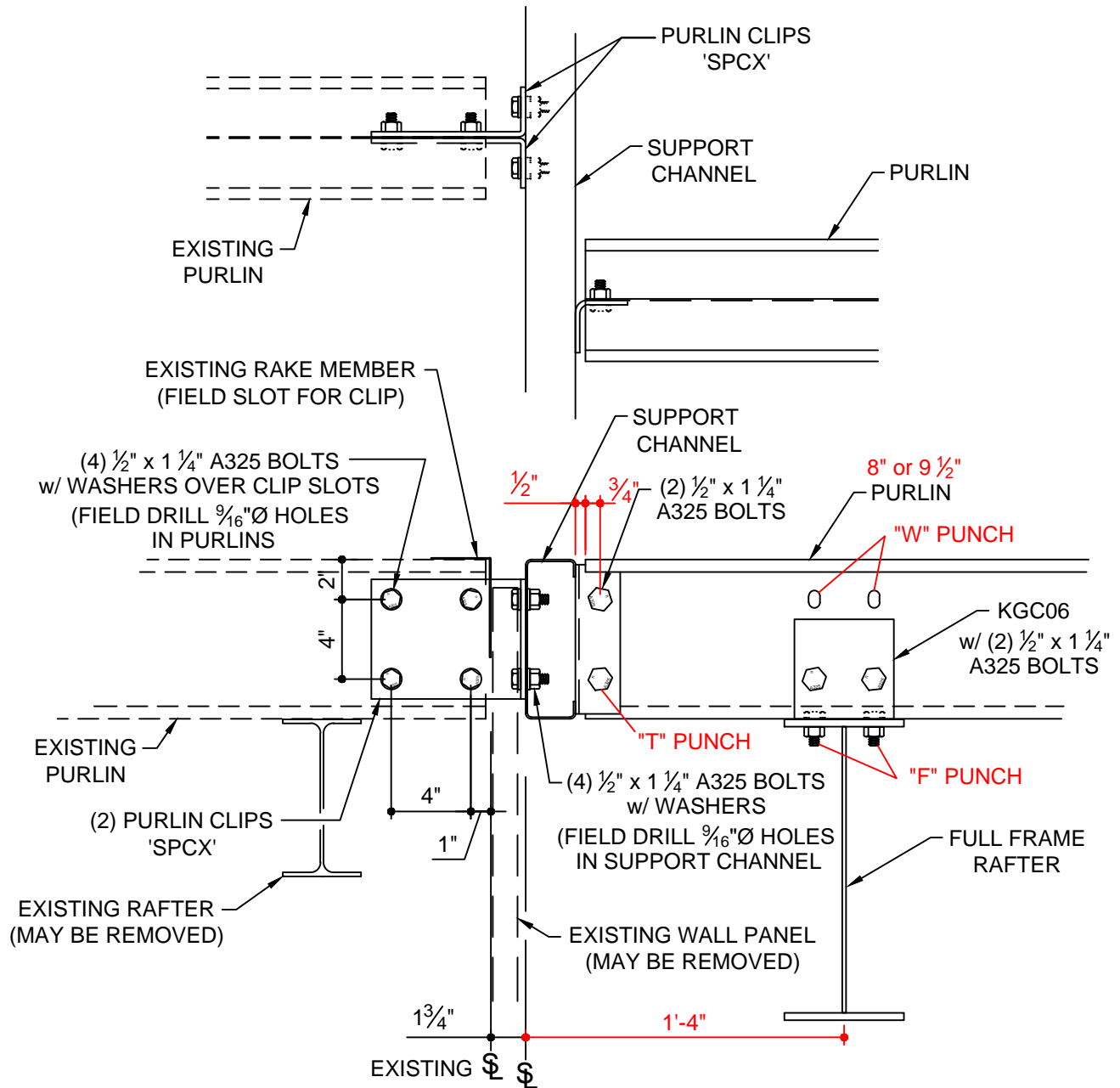
**TIE-IN TO EXISTING PURLIN WITH TRANSITION ZEE  
SUPPORTED BY KBS (8" or 9  $\frac{1}{2}$ " PURLINS)**



BJ0039K

**TRANSITION ZEE LAP DETAIL**

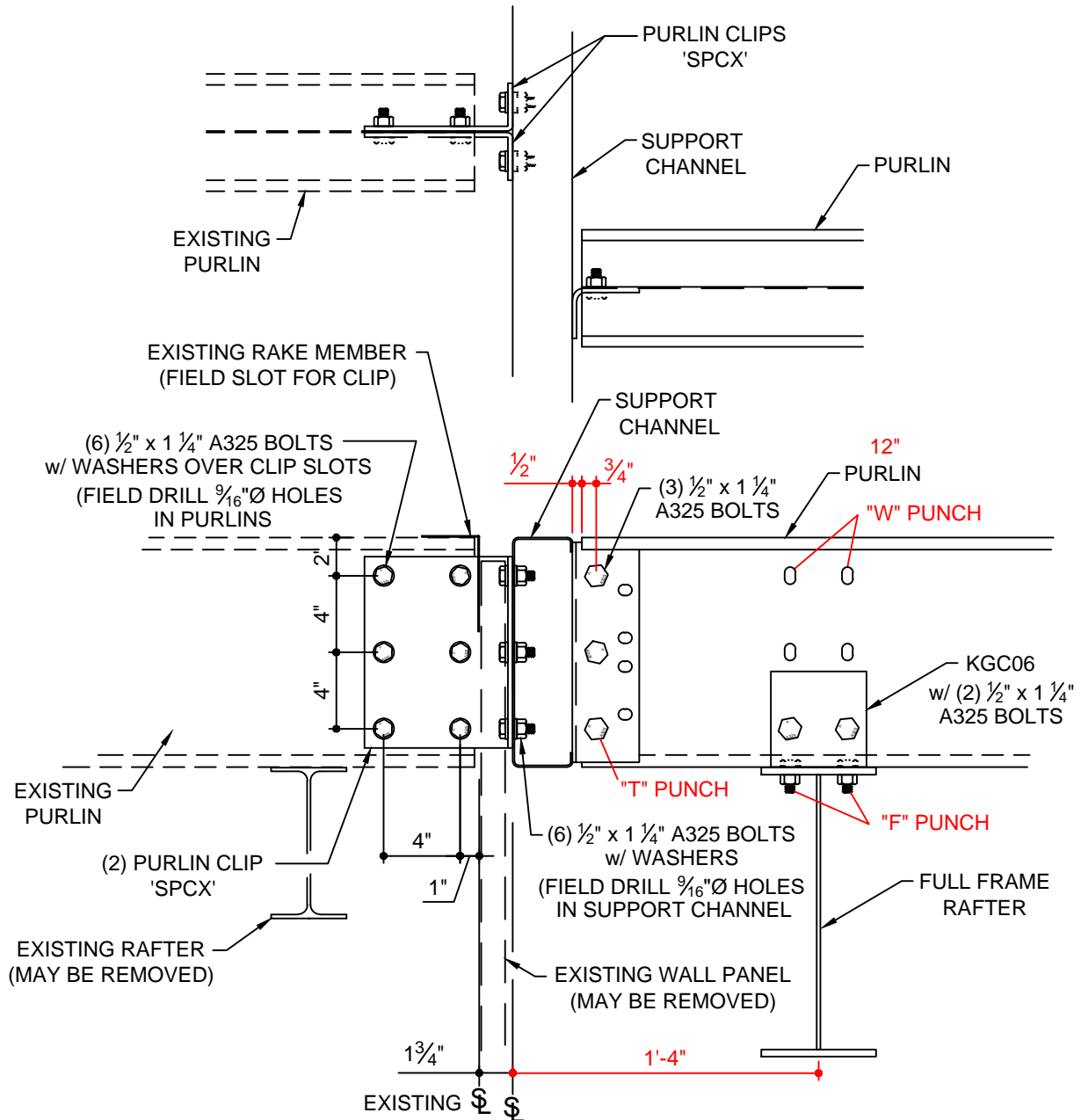
**TIE-IN TO EXISTING PURLIN WITH TRANSITION ZEE  
SUPPORTED BY KBS (12" PURLINS)**



BJ0041K

TIE-IN TO EXISTING PURLIN WITH SUPPORT  
CHANNEL SUPPORTED BY KBS

**BEFORE USING THIS DETAIL VERIFY WITH  
THE DESIGN ENGINEER THAT THE  
CONNECTION WILL BE ADEQUATE**

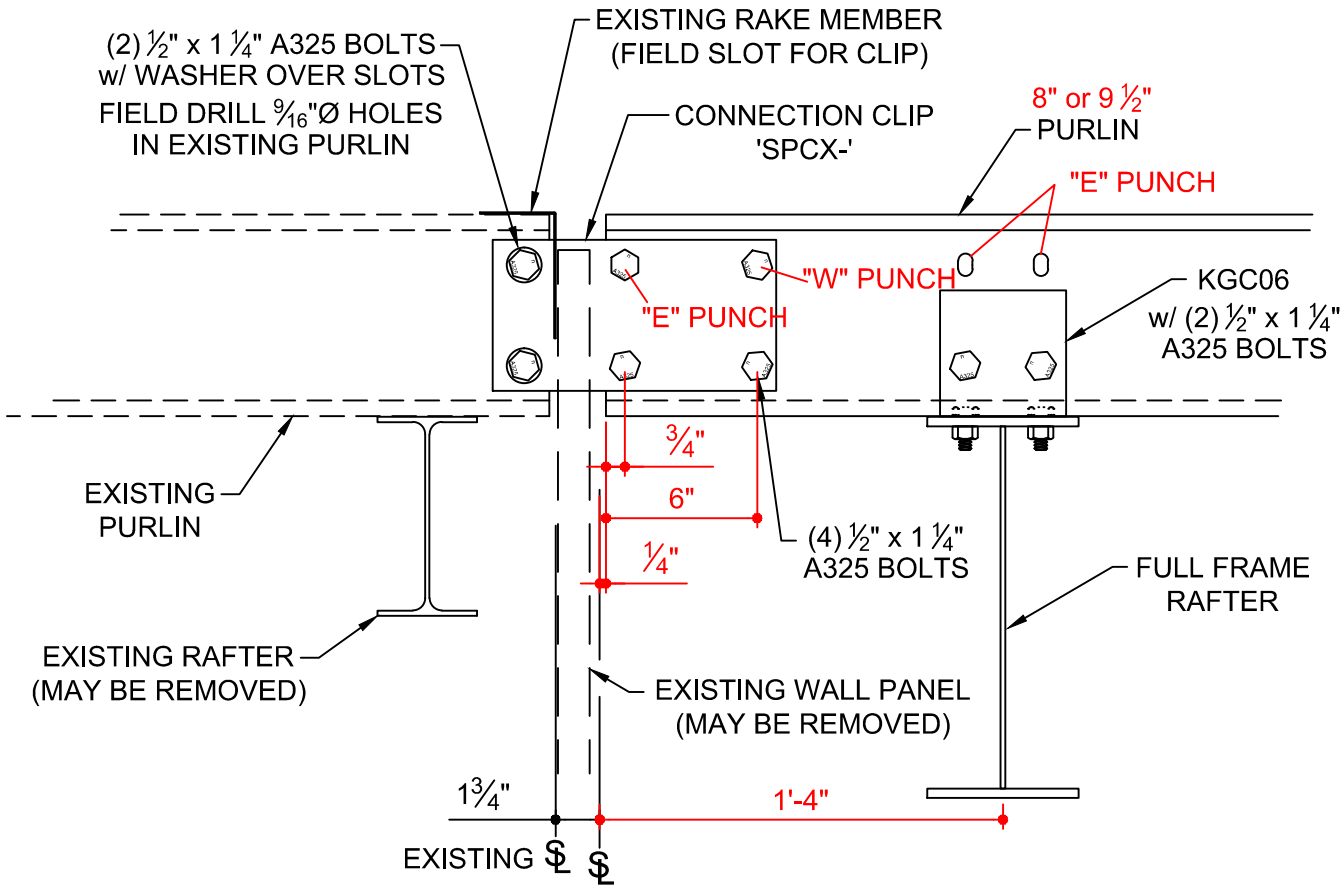
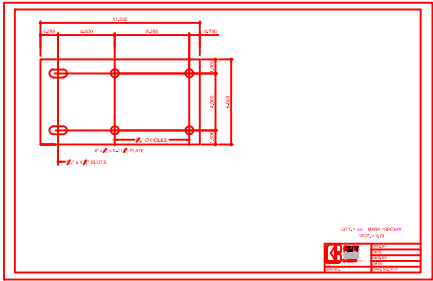


BJ0042K

TIE-IN TO EXISTING PURLIN WITH SUPPORT  
CHANNEL SUPPORTED BY KBS

**BEFORE USING THIS DETAIL VERIFY WITH  
THE DESIGN ENGINEER THAT THE  
CONNECTION WILL BE ADEQUATE**

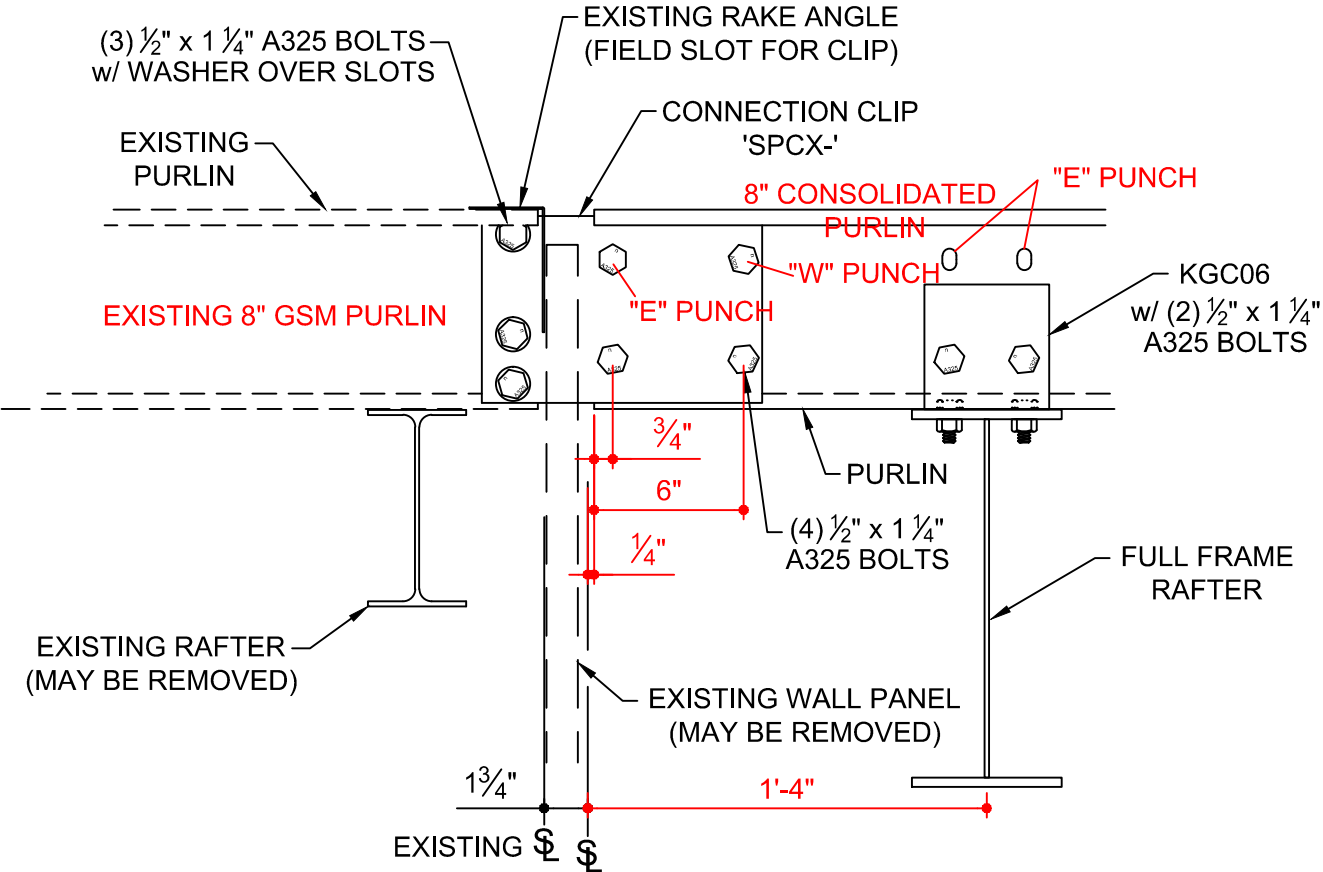
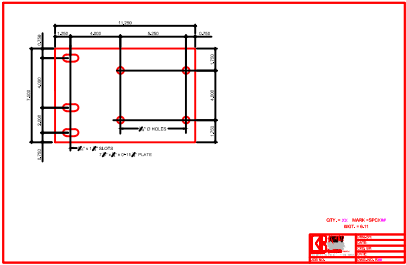




BJ0045K

TIE-IN TO EXISTING PURLIN WITH CLIP  
EXISTING SUPPORTED BY KBS

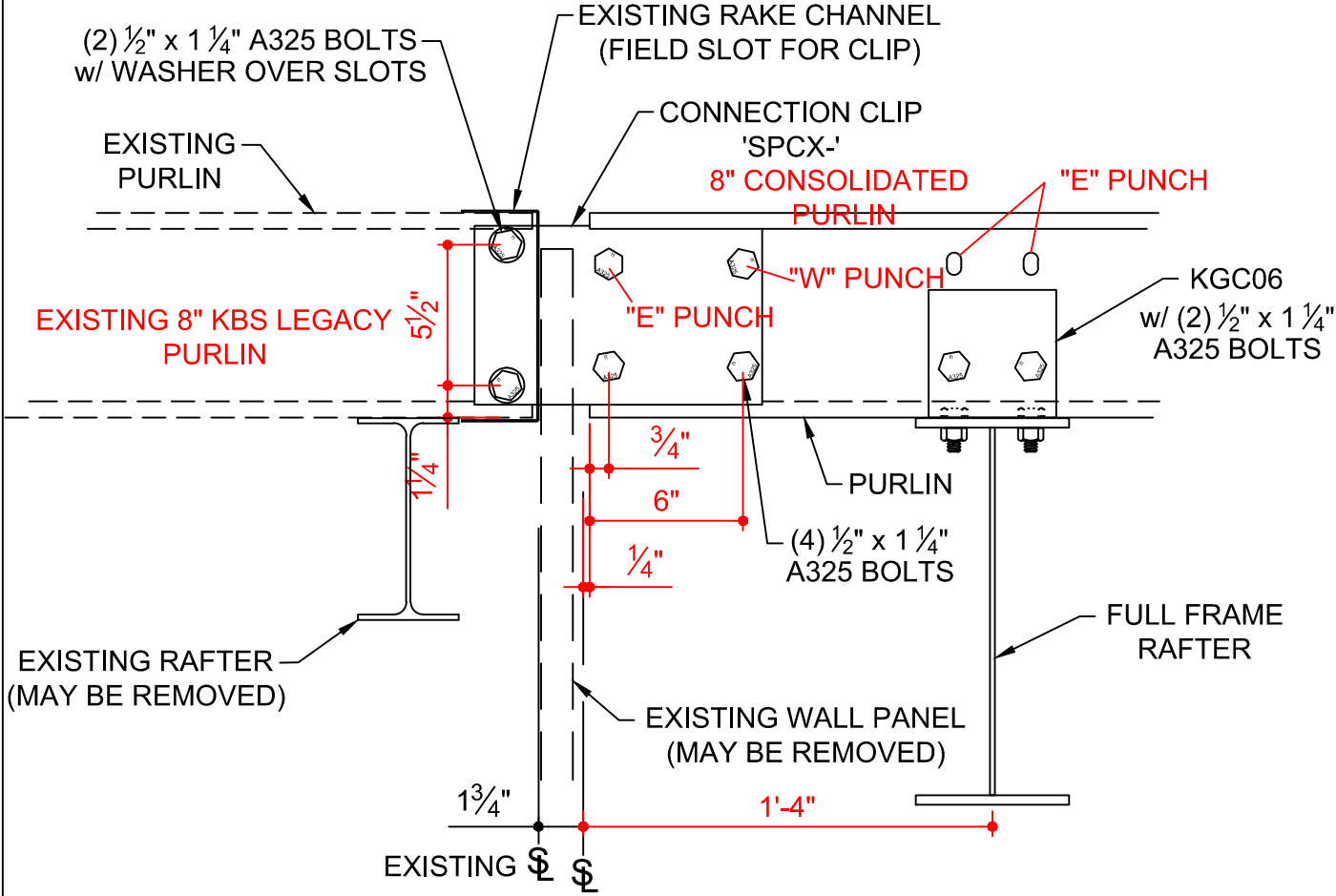
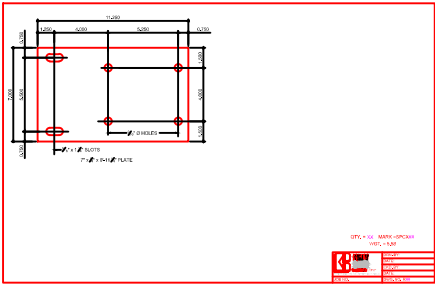




BJ0145K

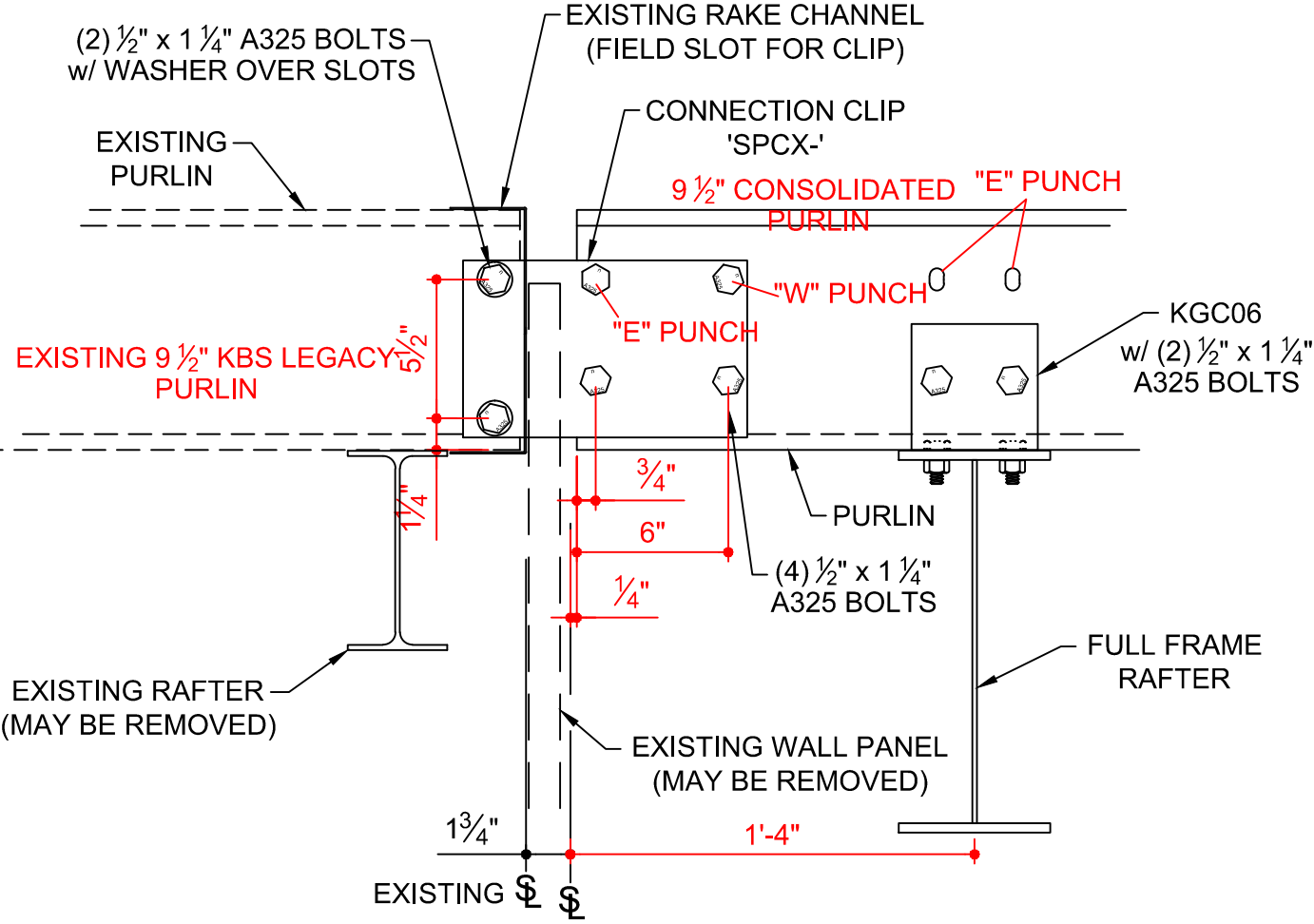
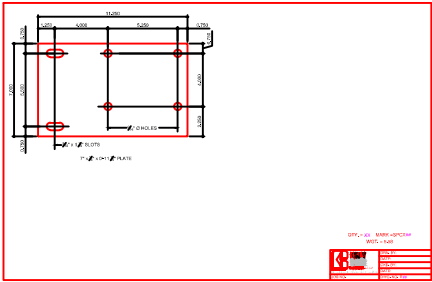
8" CONSOLIDATED PURLIN TO 8"  
EXISTING GSM PURLIN w/CLIP  
SUPPORT BY NEW FRAME





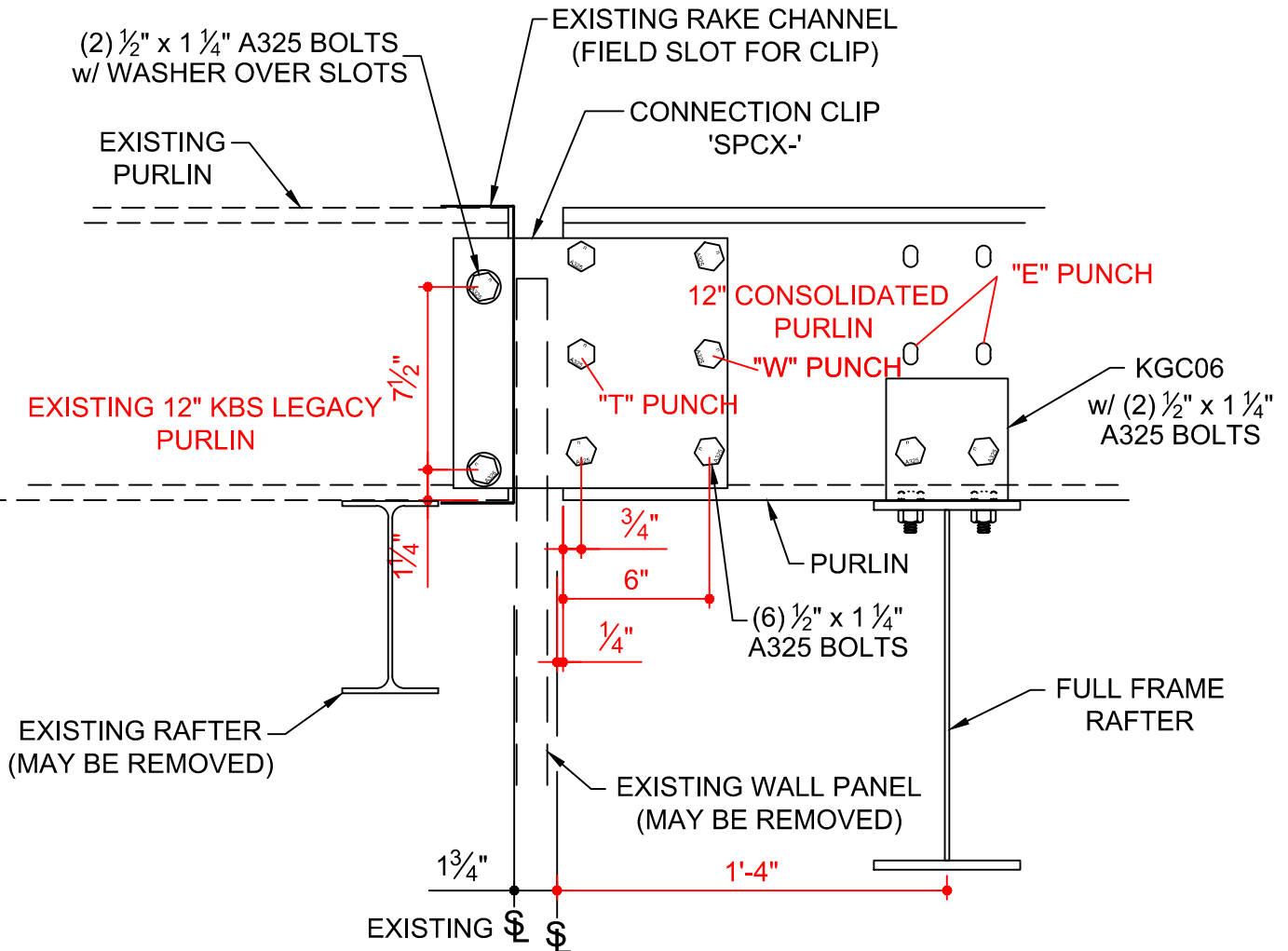
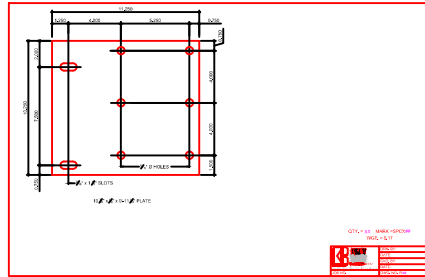
BJ0245K

8" CONSOLIDATED PURLIN TO 8"  
EXISTING KBS LEGACY PURLIN w/CLIP  
SUPPORT BY NEW FRAME



BJ1245K

9 1/2" CONSOLIDATED PURLIN TO 9 1/2"  
EXISTING KBS LEGACY PURLIN w/CLIP  
SUPPORT BY NEW FRAME



BJ2245K

12" CONSOLIDATED PURLIN TO 12"  
EXISTING KBS LEGACY PURLIN w/CLIP  
SUPPORT BY NEW FRAME



**KIRBY**  
BUILDING  
SYSTEMS  
A NUCOR COMPANY  
BETTER SOLUTIONS. BETTER BUILDINGS.

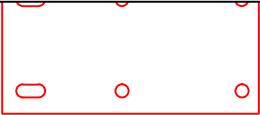
PREPARED BY: BKC

DATE: 4-24-17

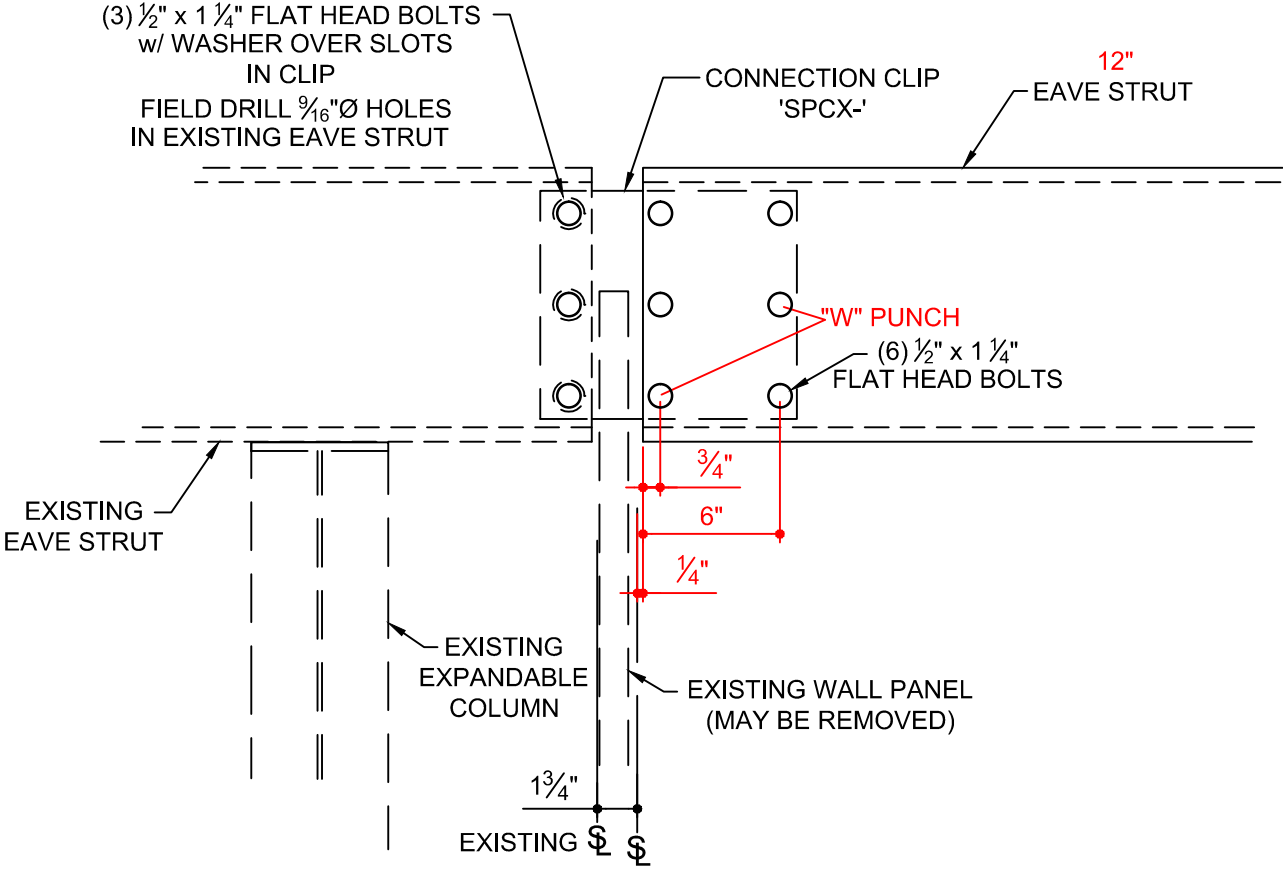
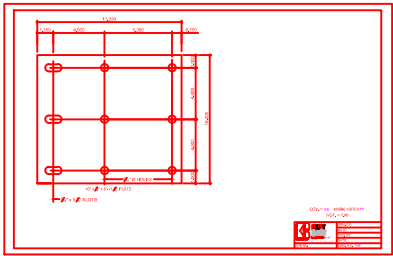
BJ2245





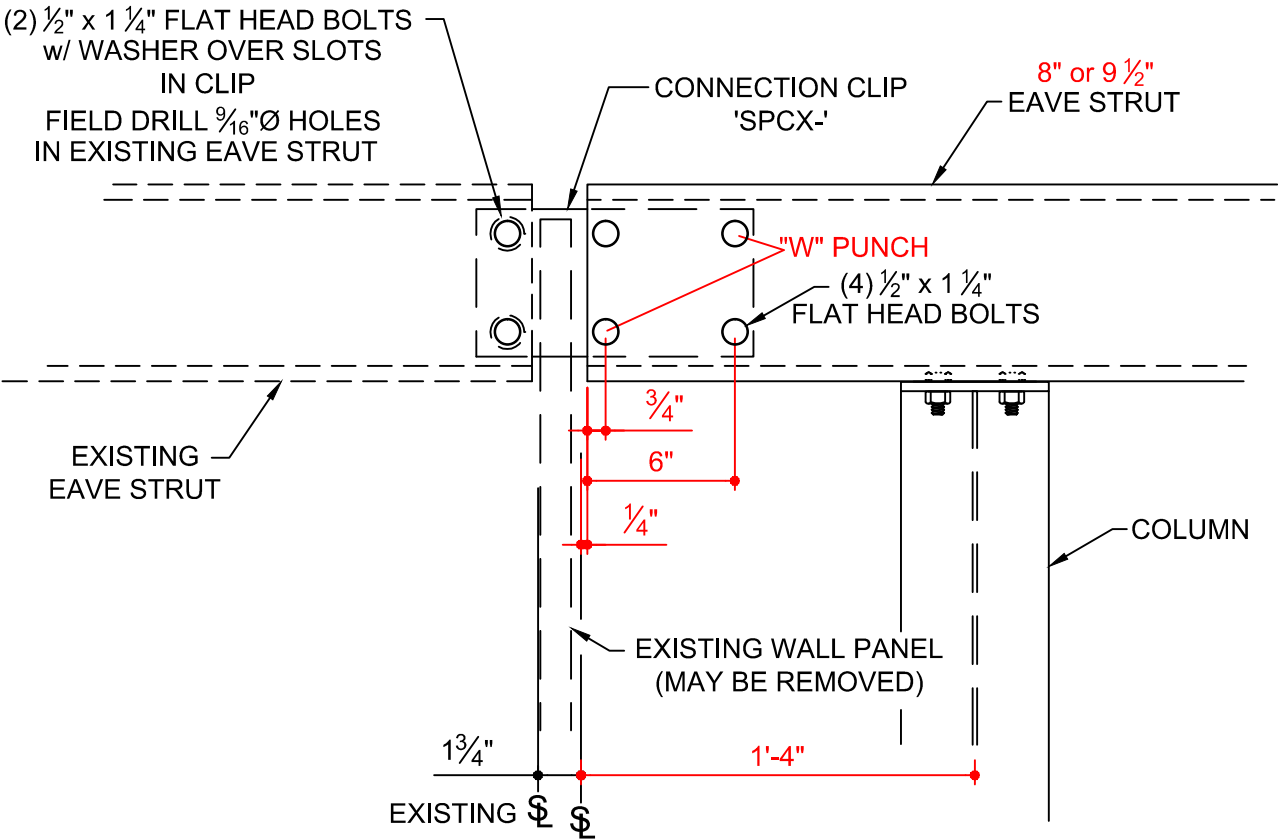
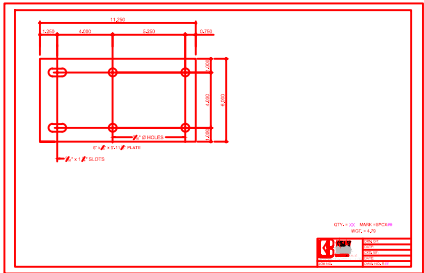


FULL SIZE VERSION FOR PLASMA



BJ0072~~K~~

TIE-IN TO EXISTING EAVE STRUT WITH CLIP  
SUPPORTED BY EXISTING



BJ0081K

TIE-IN TO EXISTING EAVE STRUT WITH CLIP  
EXISTING SUPPORTED BY KBS

## BJ