

BG3011 - Int. Rafter (Welded)

BG3016 - End Rafter (Welded)

BG3051 - Int. Rafter (Bolted)

BG3056 - End Rafter (Bolted)

BG3151 - Int. Rafter w/ Joist Depth < Rafter (Fully Bolted)

BG3152 - Int. Rafter w/ Joist Depth > Rafter (Fully Bolted)

BG3156 - End Rafter w/ Joist Depth < Rafter (Fully Bolted)

BG3157 - End Rafter w/ Joist Depth > Rafter (Fully Bolted)

## **Strut Joist Connections**

BG0071 - Strut Joist to Int. Rafter

BG0072 - Strut Joist to Int. Rafter w/ Tie Plate

BG0076 - Strut Joist to End Rafter

BG0081 - Strut Joist to Int. Rafter (Fully Bolted)

BG0086 - Strut Joist to End Rafter (Fully Bolted)

## **---OLD PRODUCT---**

BG0011 - Int. Rafter (Welded)

BG0016 - End Rafter (Welded)

BG0051 - Int. Rafter (Bolted)

BG0056 - End Rafter (Bolted)

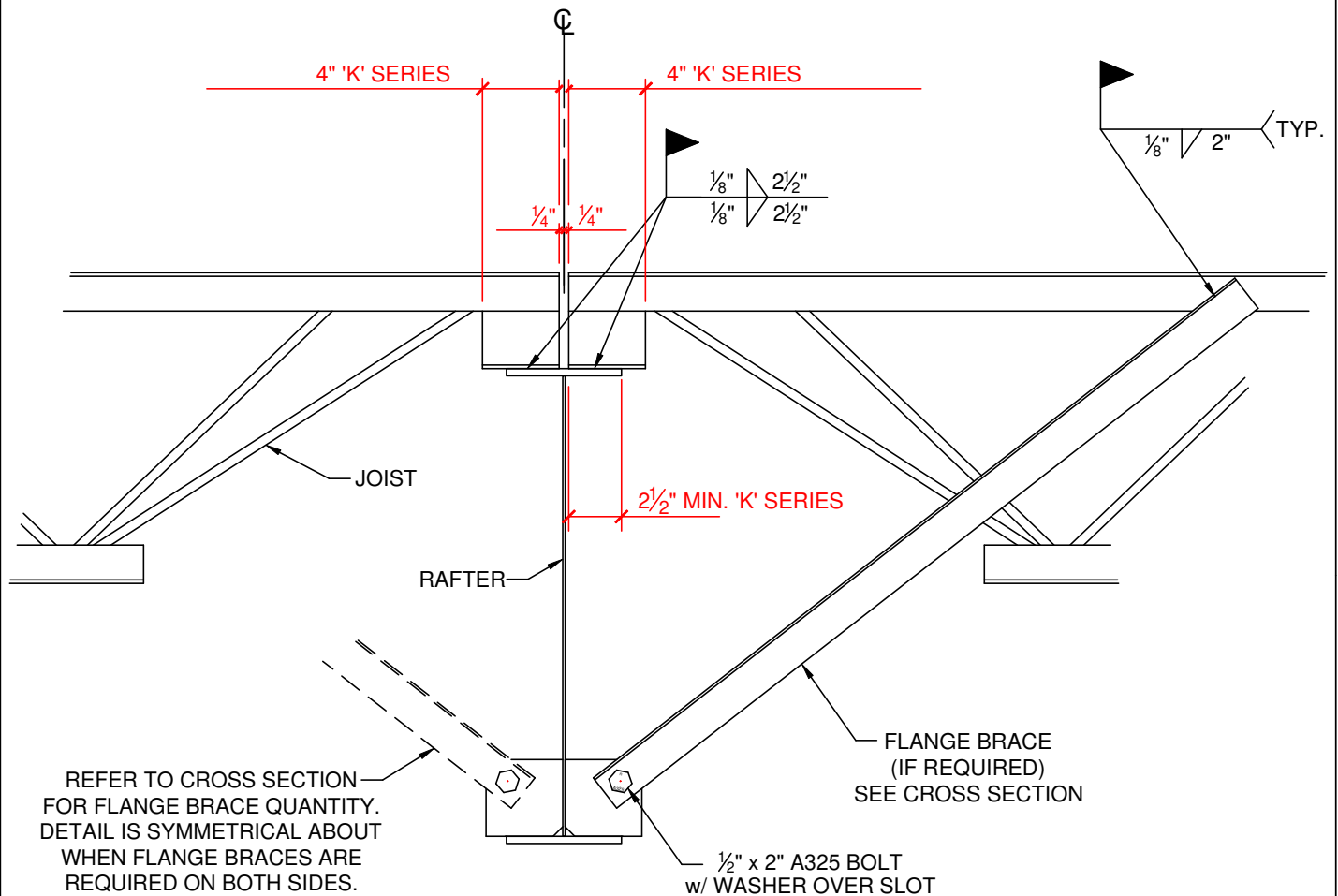
BG0151 - Int. Rafter w/ Joist Depth < Rafter (Fully Bolted)

BG1151 - Int. Rafter w/ Joist Depth > Rafter (Fully Bolted)

BG0156 - End Rafter w/ Joist Depth < Rafter (Fully Bolted)

BG1156 - End Rafter w/ Joist Depth > Rafter (Fully Bolted)

---



BG3011

ROOF JOIST CONNECTION AT INTERIOR RAFTER (WELDED)



**KIRBY**  
BUILDING  
SYSTEMS

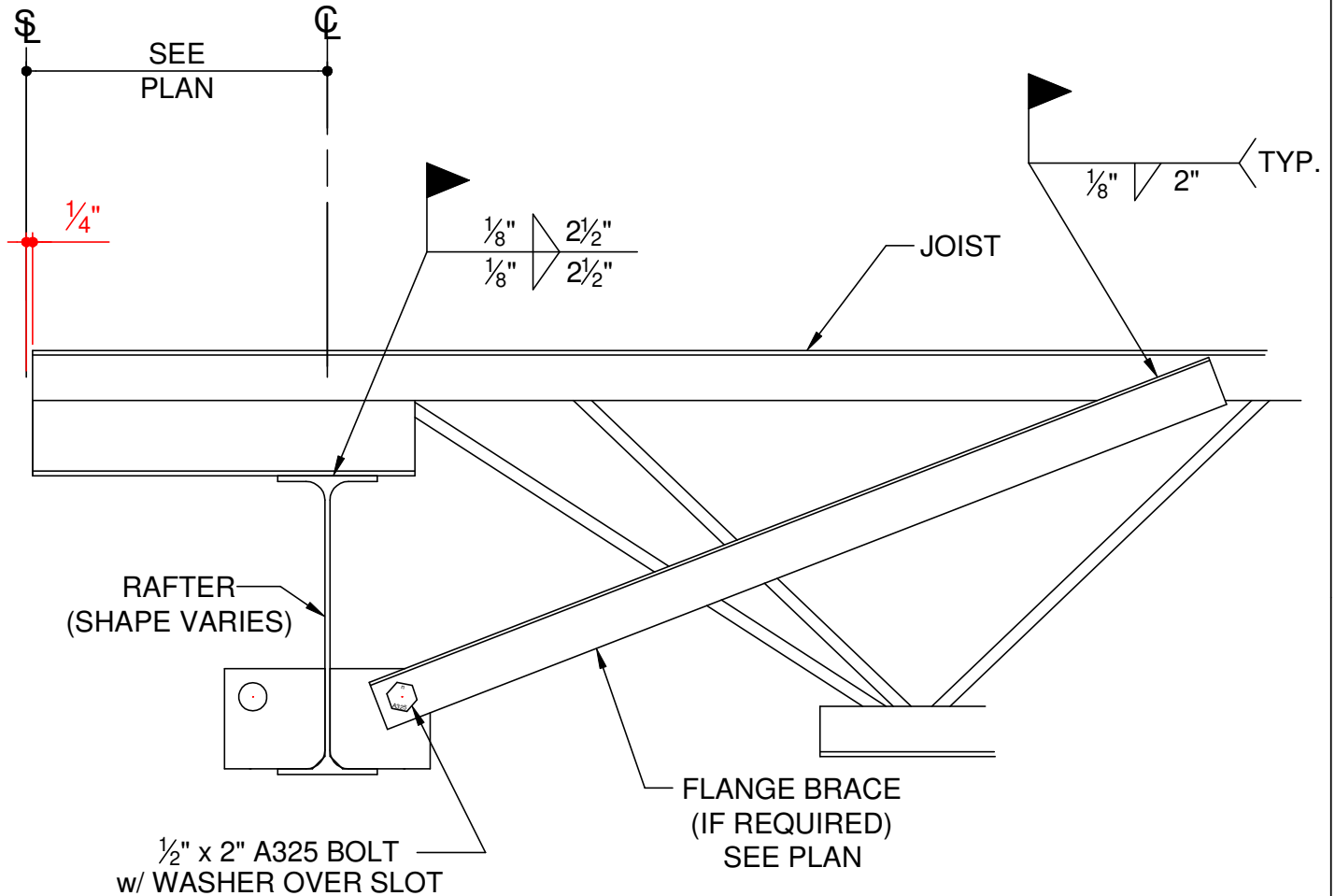
A NUCOR COMPANY

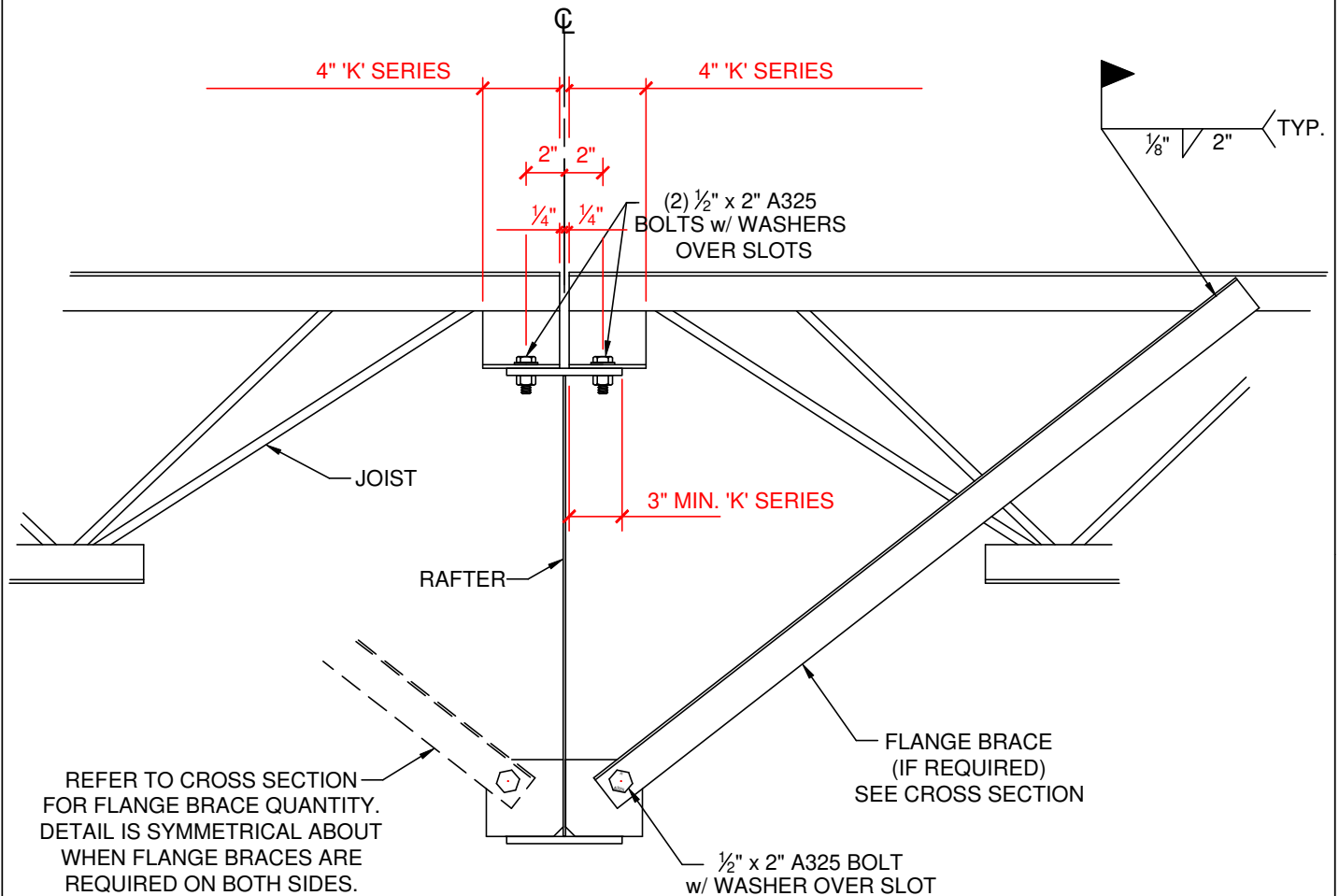
BETTER SOLUTIONS. BETTER BUILDINGS.

PREPARED BY: BKC

DATE: 06-20-2019

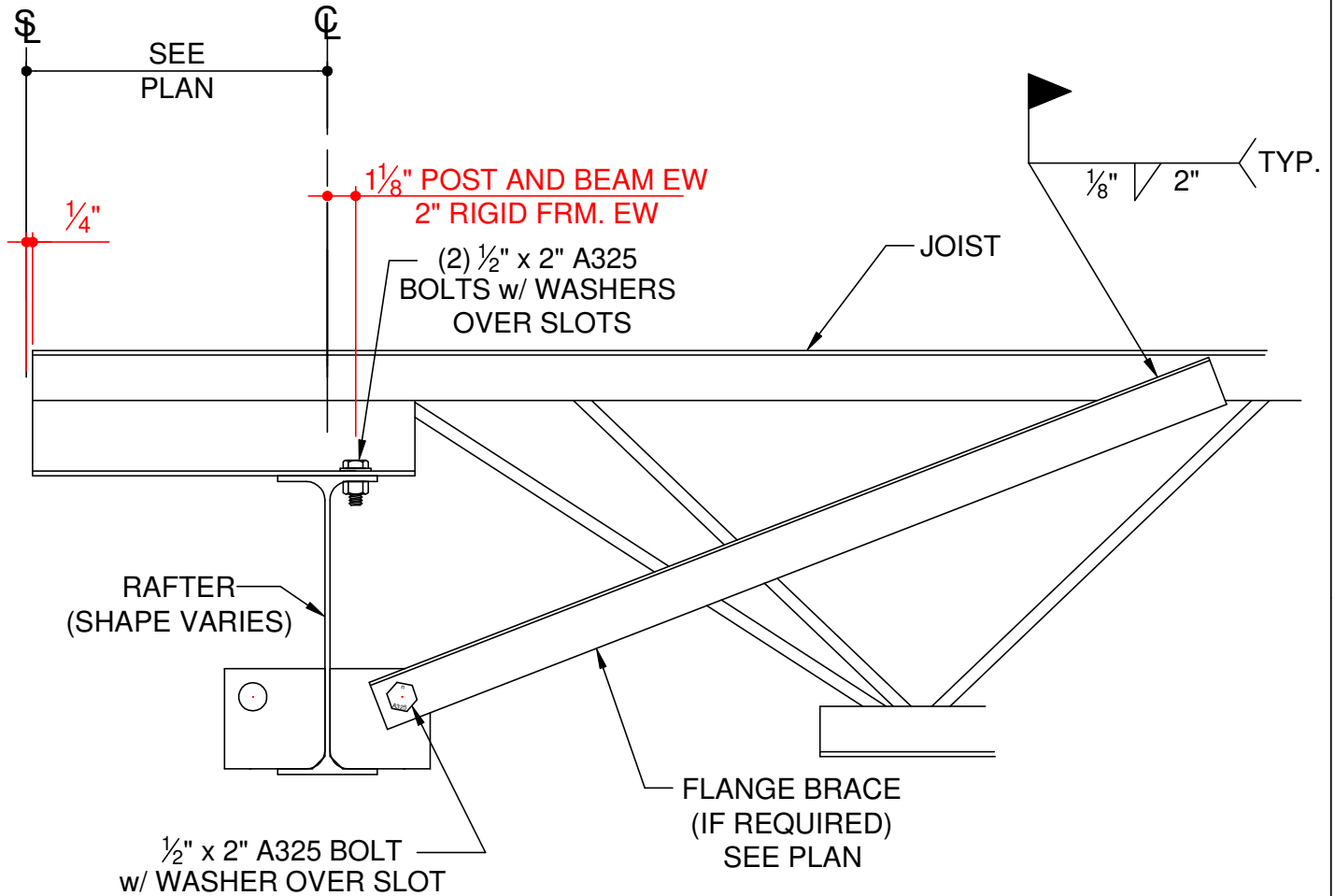
# BG3011

**BG3016****ROOF JOIST CONNECTION AT ENDWALL RAFTER (WELDED)**



BG3051

ROOF JOIST CONNECTION AT INTERIOR RAFTER (BOLTED)

**BG3056****ROOF JOIST CONNECTION AT ENDWALL RAFTER (BOLTED)**

## BG



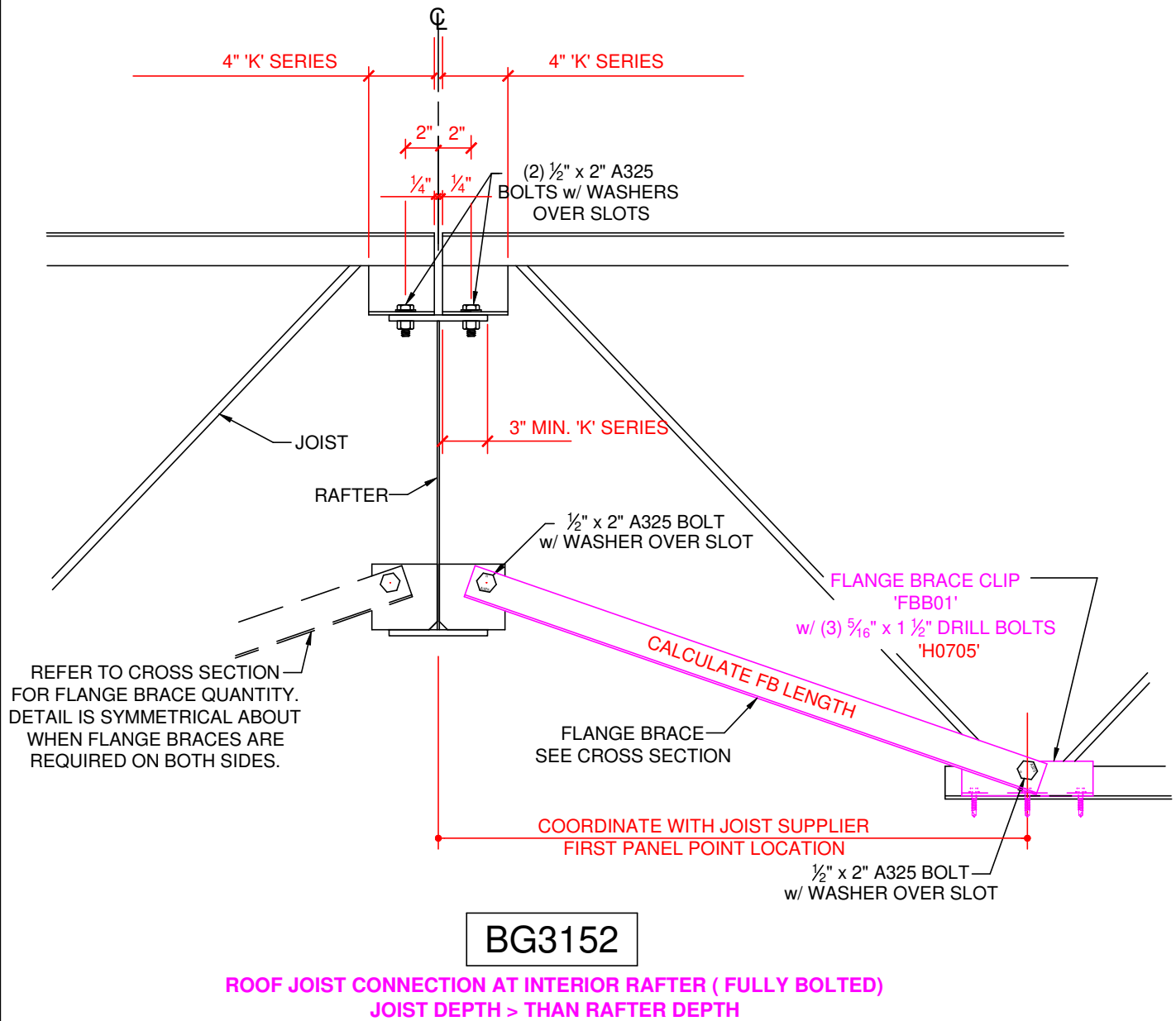
### ROOF JOIST CONNECTION AT INTERIOR RAFTER ( FULLY BOLTED ) JOIST DEPTH < RAFTER DEPTH



BETTER SOLUTIONS. BETTER BUILDINGS.

DATE: 06-20-2019

# BG3151





## ROOF JOIST CONNECTION AT ENDWALL RAFTER (FULLY BOLTED) JOIST DEPTH < RAFTER DEPTH

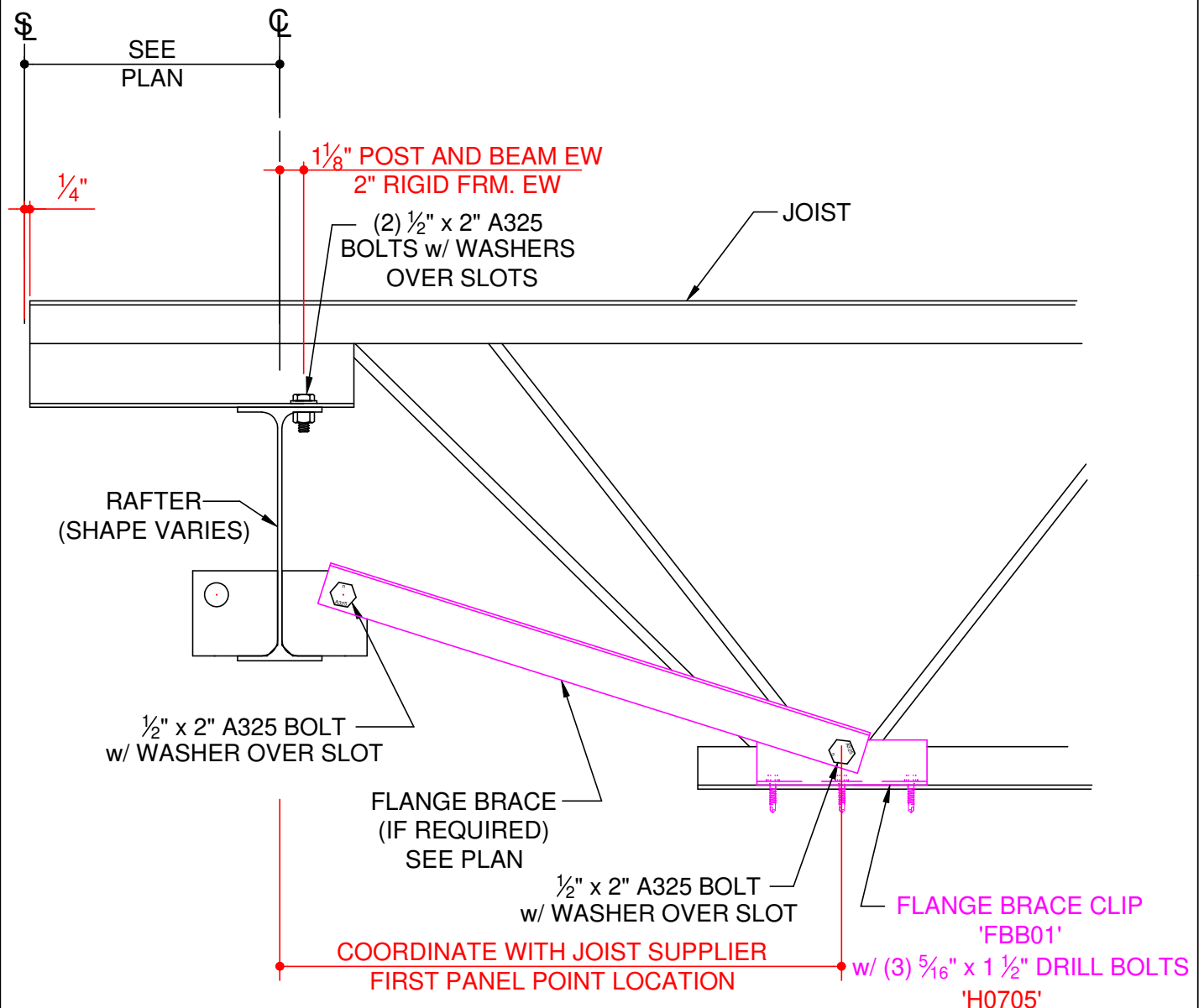


BETTER SOLUTIONS. BETTER BUILDINGS.

DATE: 06-20-2019

# BG3156

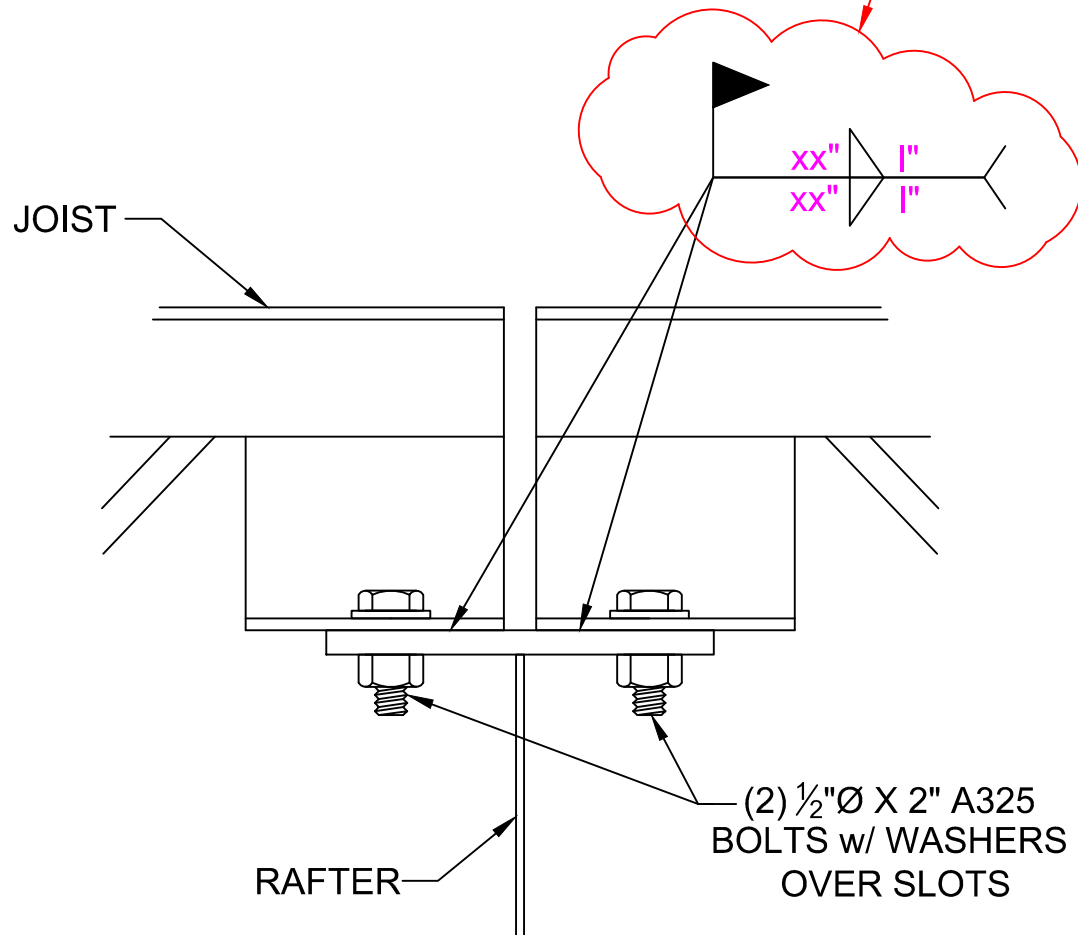




BG3157

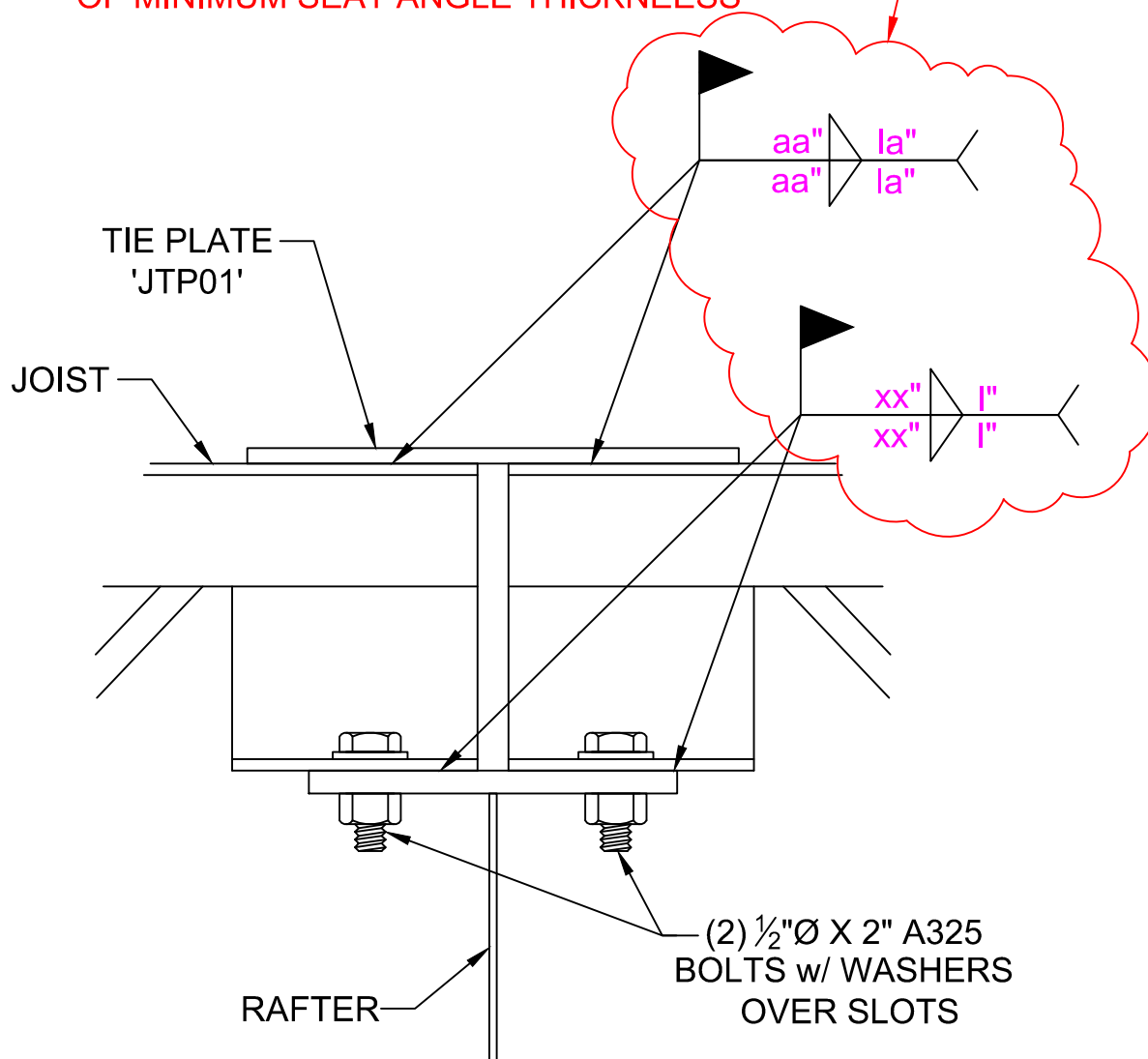
ROOF JOIST CONNECTION AT ENDWALL RAFTER (FULLY BOLTED)  
JOIST DEPTH > RAFTER DEPTH

REPLACE TEXT WITH WELD SIZES AND LENGTH  
FROM DESIGN.  
IF WELD DEPTH EXCEEDS  $\frac{1}{8}$ " NOTIFY JOIST SUPPLIER  
OF MINIMUM SEAT ANGLE THICKNEESS

**BG0071K****ROOF JOIST CONNECTION AT INTERIOR RAFTER AT STRUT JOIST**

REPLACE TEXT WITH WELD SIZES AND LENGTH  
FROM DESIGN.

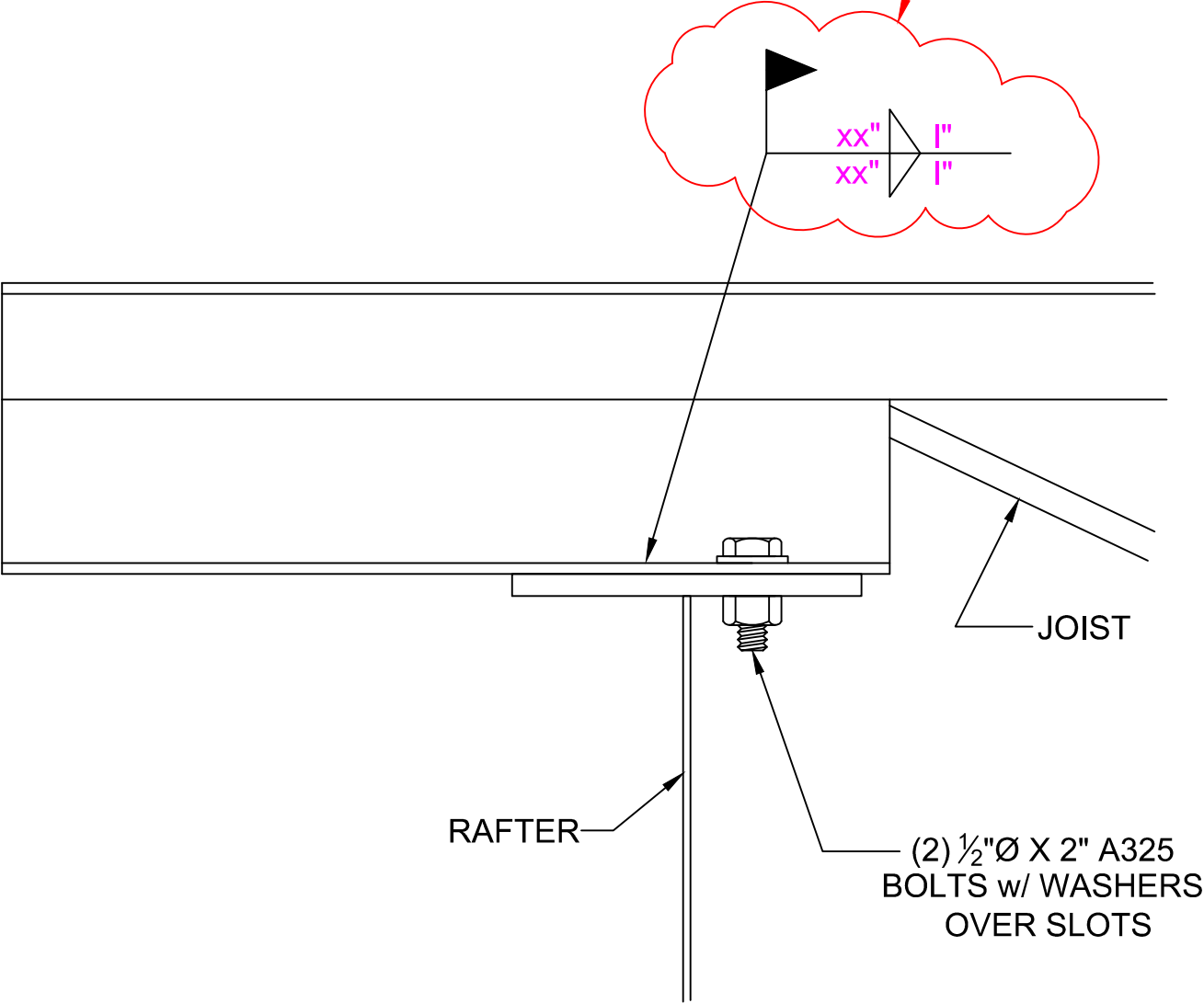
IF WELD DEPTH EXCEEDS  $\frac{1}{8}$ " NOTIFY JOIST SUPPLIER  
OF MINIMUM SEAT ANGLE THICKNESS



BG0072K

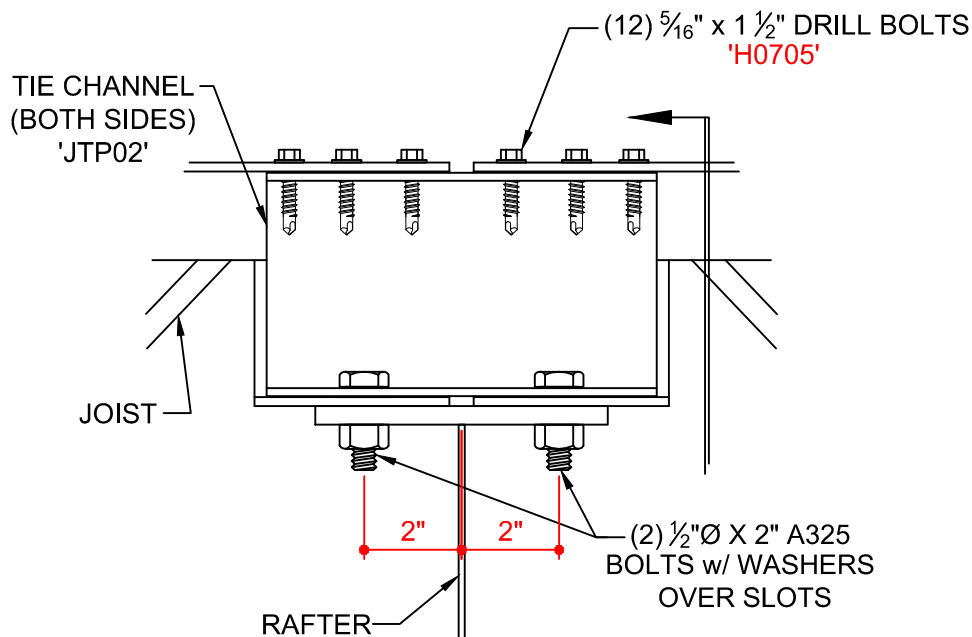
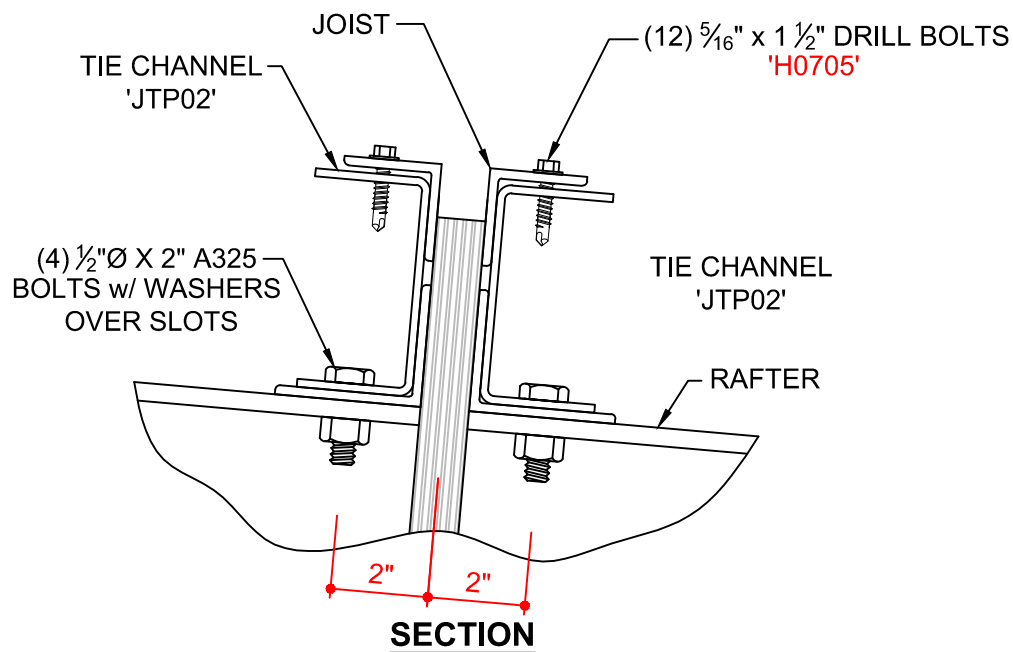
ROOF JOIST CONNECTION AT INTERIOR RAFTER AT STRUT JOIST  
w/ TIE PLATE

REPLACE TEXT WITH WELD SIZES AND LENGTH  
FROM DESIGN.  
IF WELD DEPTH EXCEEDS 1/8" NOTIFY JOIST SUPPLIER  
OF MINIMUM SEAT ANGLE THICKNEESS



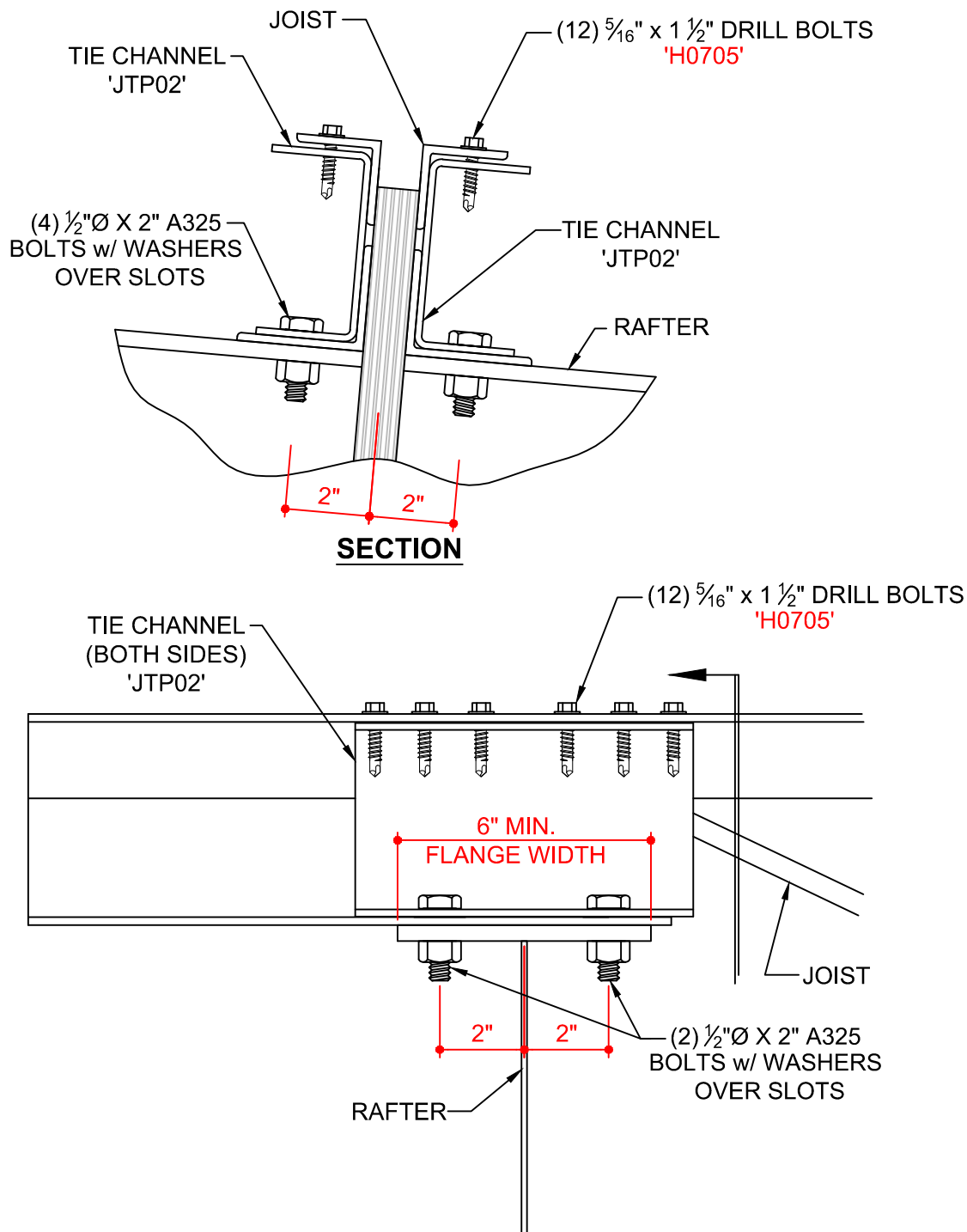
BG0076K

ROOF JOIST CONNECTION AT END RAFTER AT STRUT JOIST



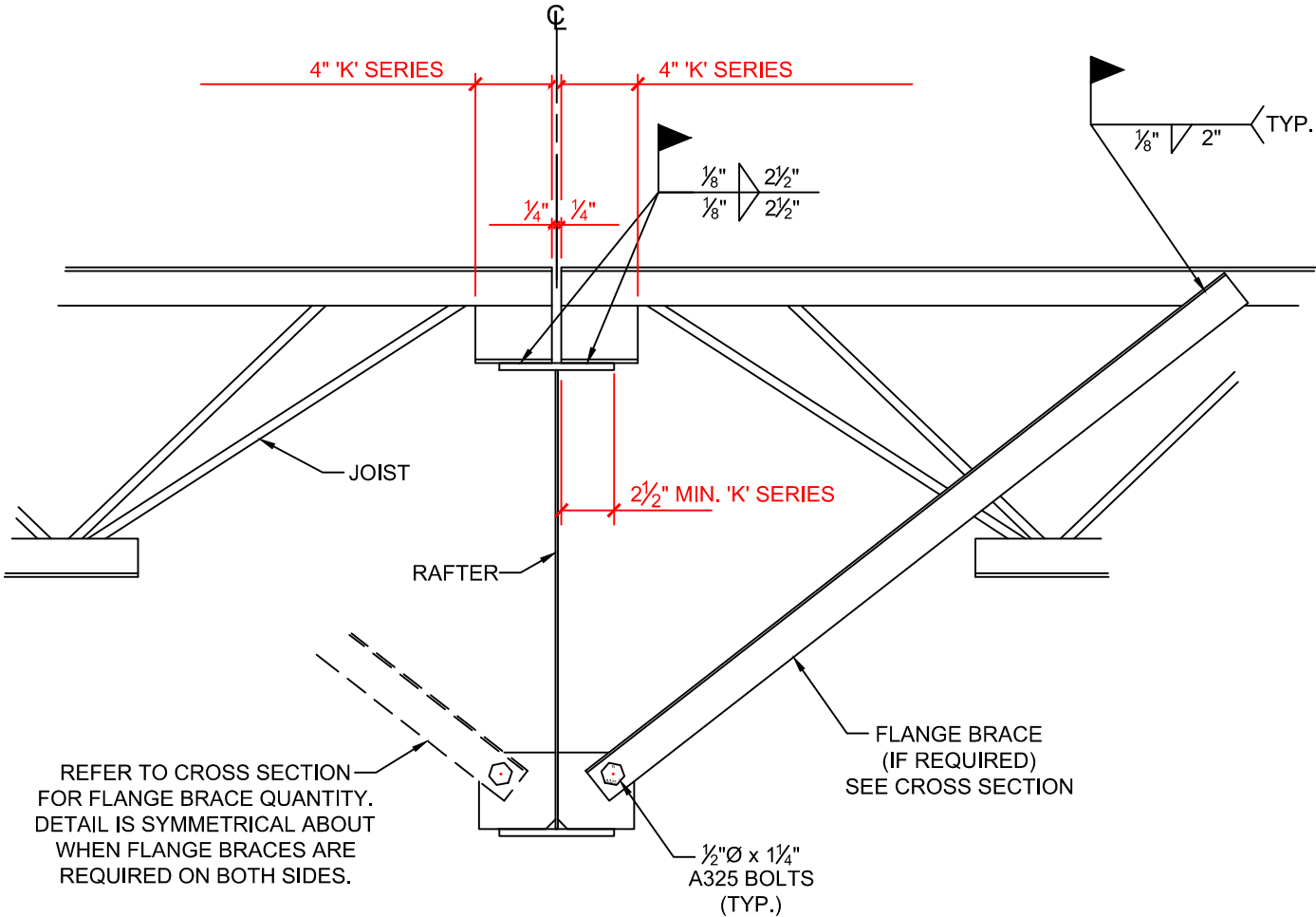
BG0081K

ROOF JOIST CONNECTION AT INTERIOR RAFTER AT STRUT JOIST  
(FULLY BOLTED)



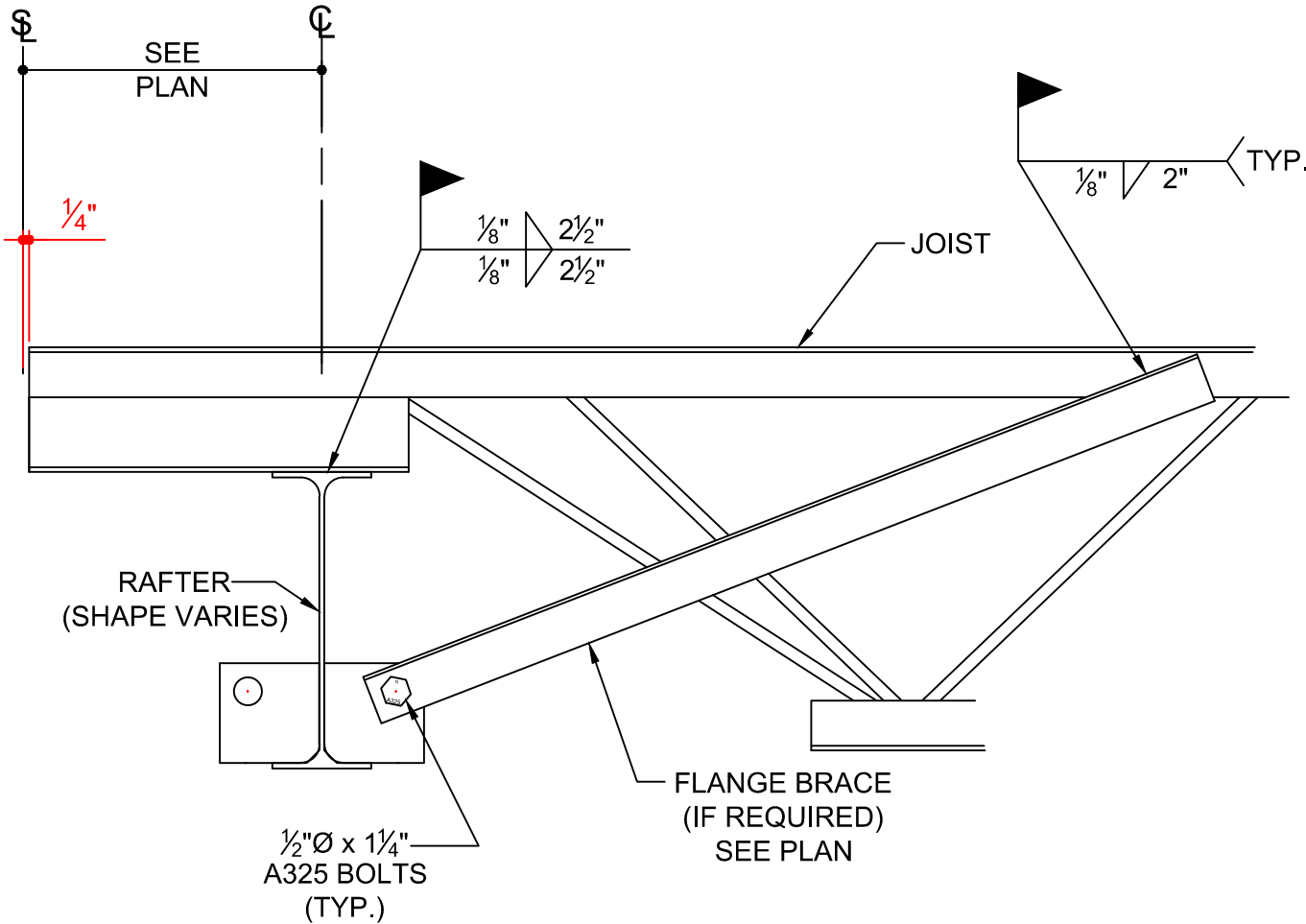
BG0086K

ROOF JOIST CONNECTION AT END RAFTER AT STRUT JOIST  
(FULLY BOLTED)



BG0011K

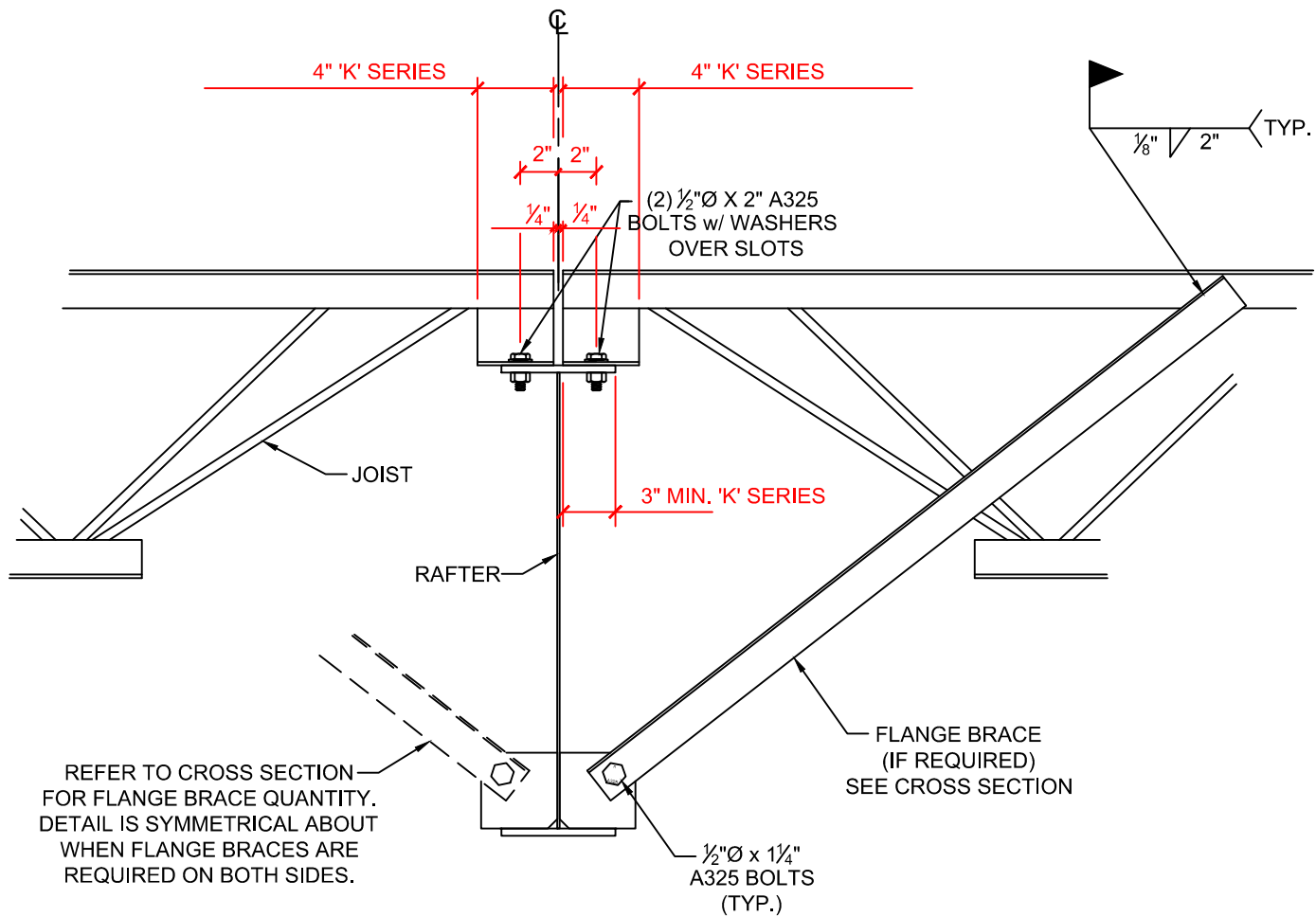
ROOF JOIST CONNECTION AT INTERIOR RAFTER (WELDED)



BG0016K

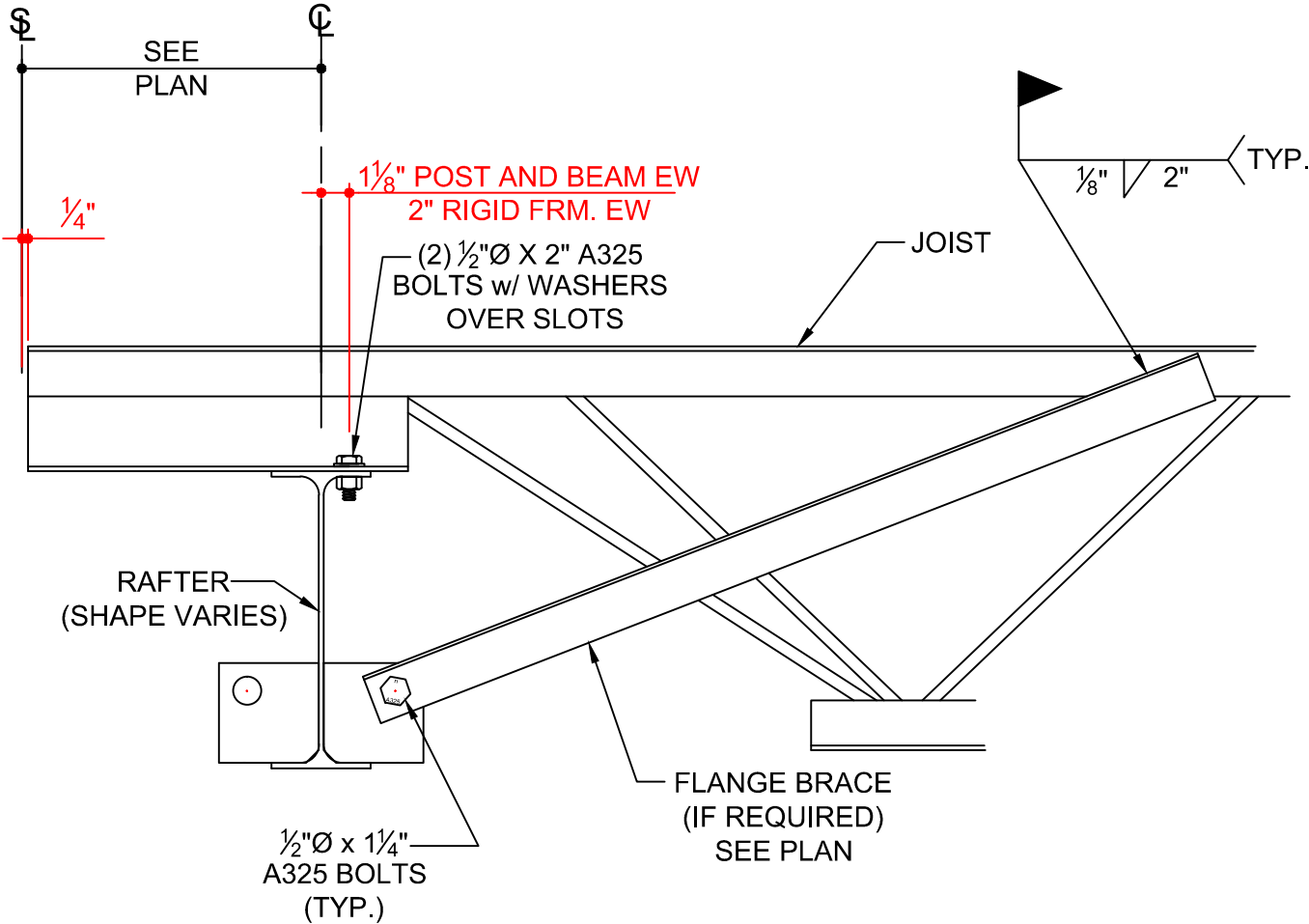
ROOF JOIST CONNECTION AT ENDWALL RAFTER (WELDED)





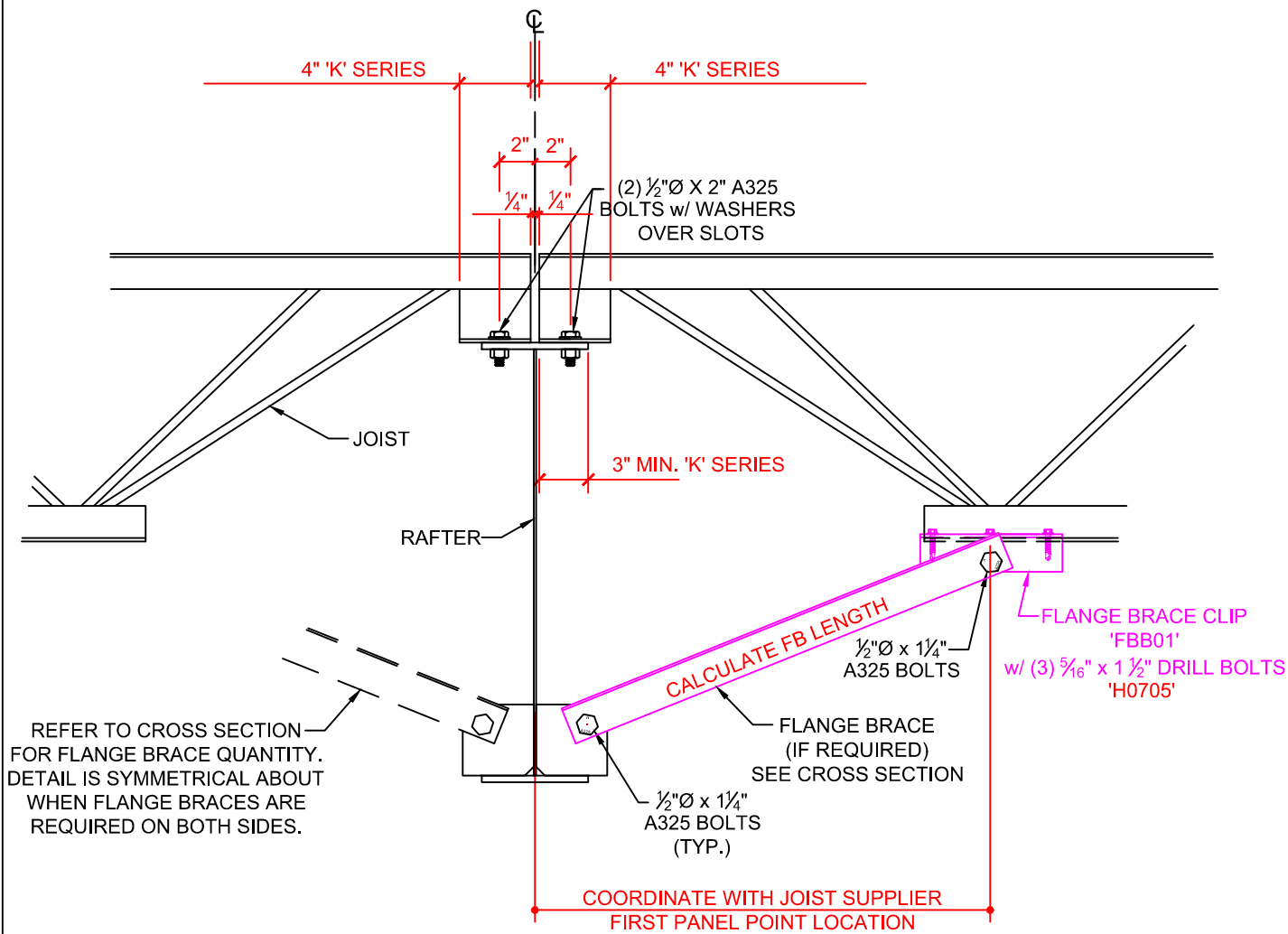
BG0051K

ROOF JOIST CONNECTION AT INTERIOR RAFTER (BOLTED)



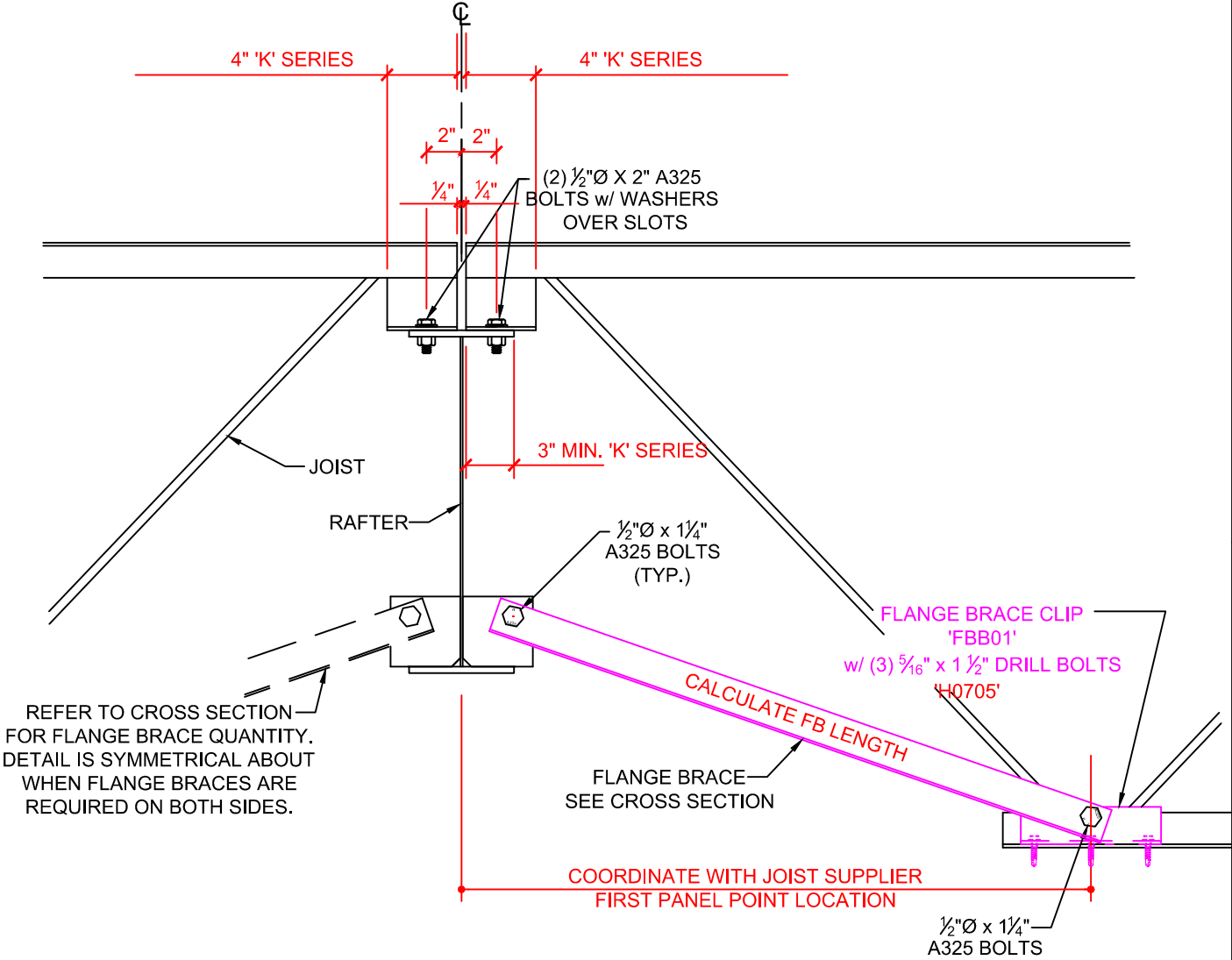
BG0056K

ROOF JOIST CONNECTION AT ENDWALL RAFTER (BOLTED)



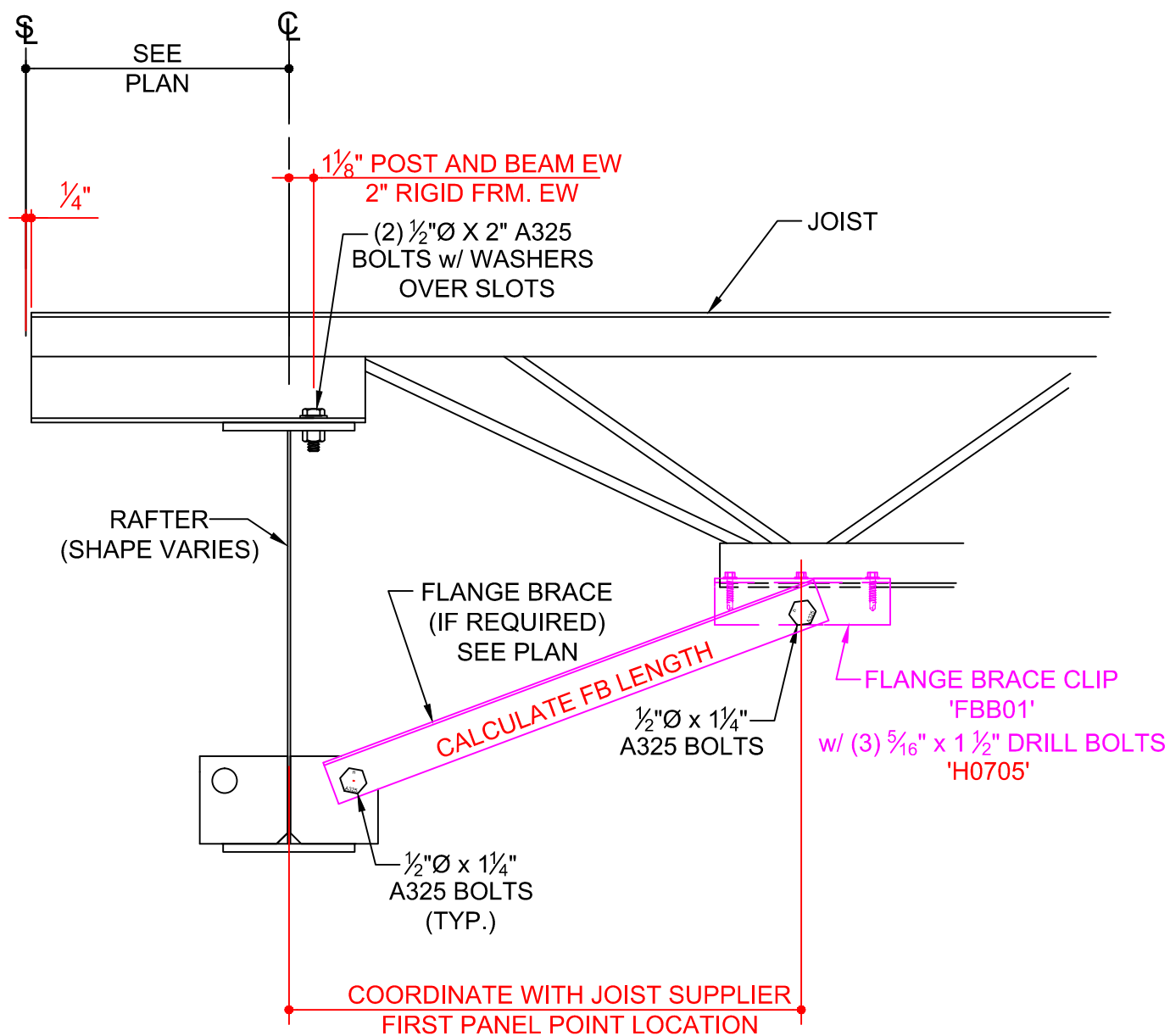
BG0151K

ROOF JOIST CONNECTION AT INTERIOR RAFTER ( FULLY BOLTED)  
JOIST DEPTH < RAFTER DEPTH



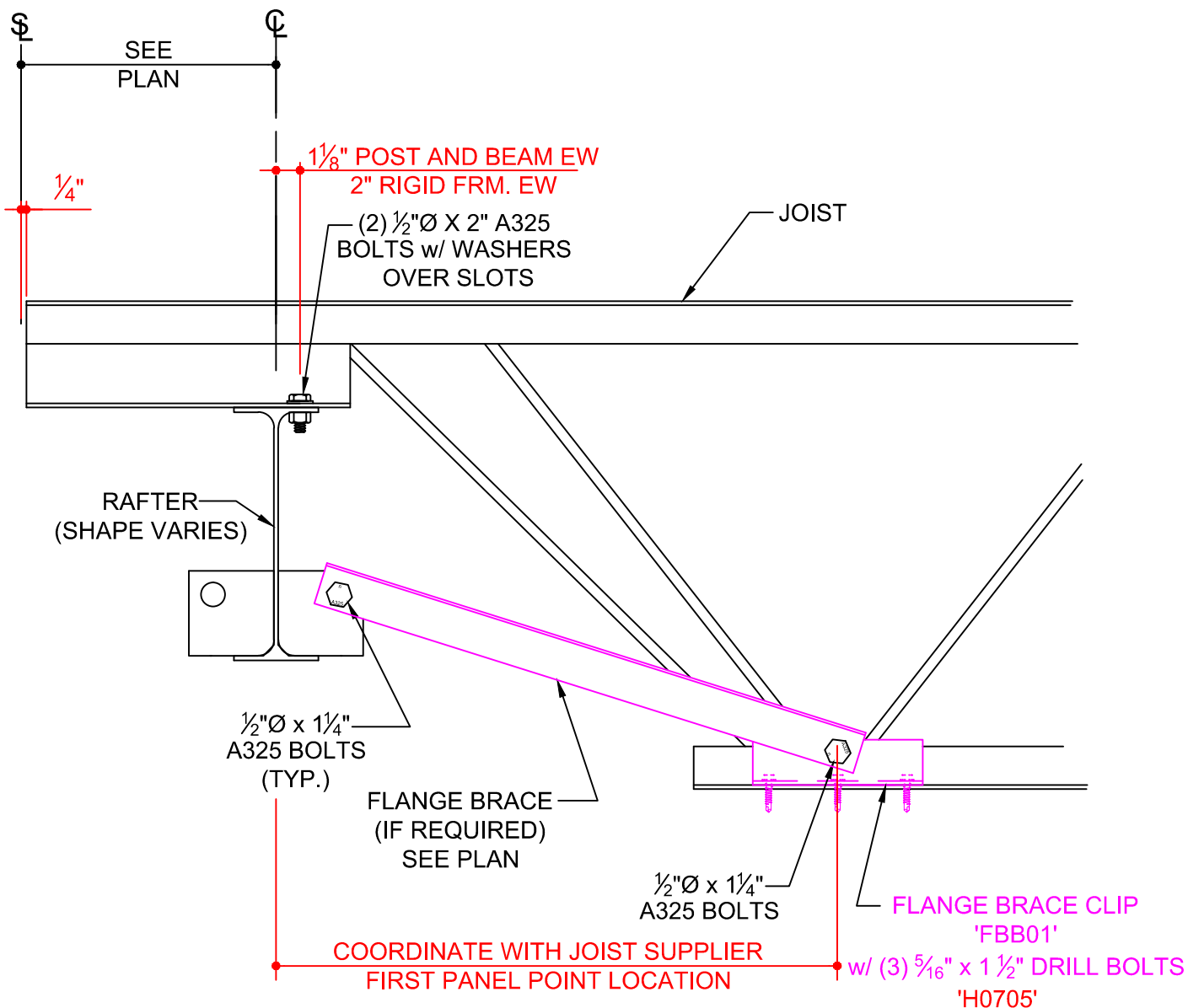
BG1151K

ROOF JOIST CONNECTION AT INTERIOR RAFTER ( FULLY BOLTED)  
JOIST DEPTH > THAN RAFTER DEPTH



BG0156K

ROOF JOIST CONNECTION AT ENDWALL RAFTER (FULLY BOLTED)  
JOIST DEPTH < RAFTER DEPTH



**BG1156K**

**ROOF JOIST CONNECTION AT ENDWALL RAFTER (FULLY BOLTED)  
JOIST DEPTH > RAFTER DEPTH**