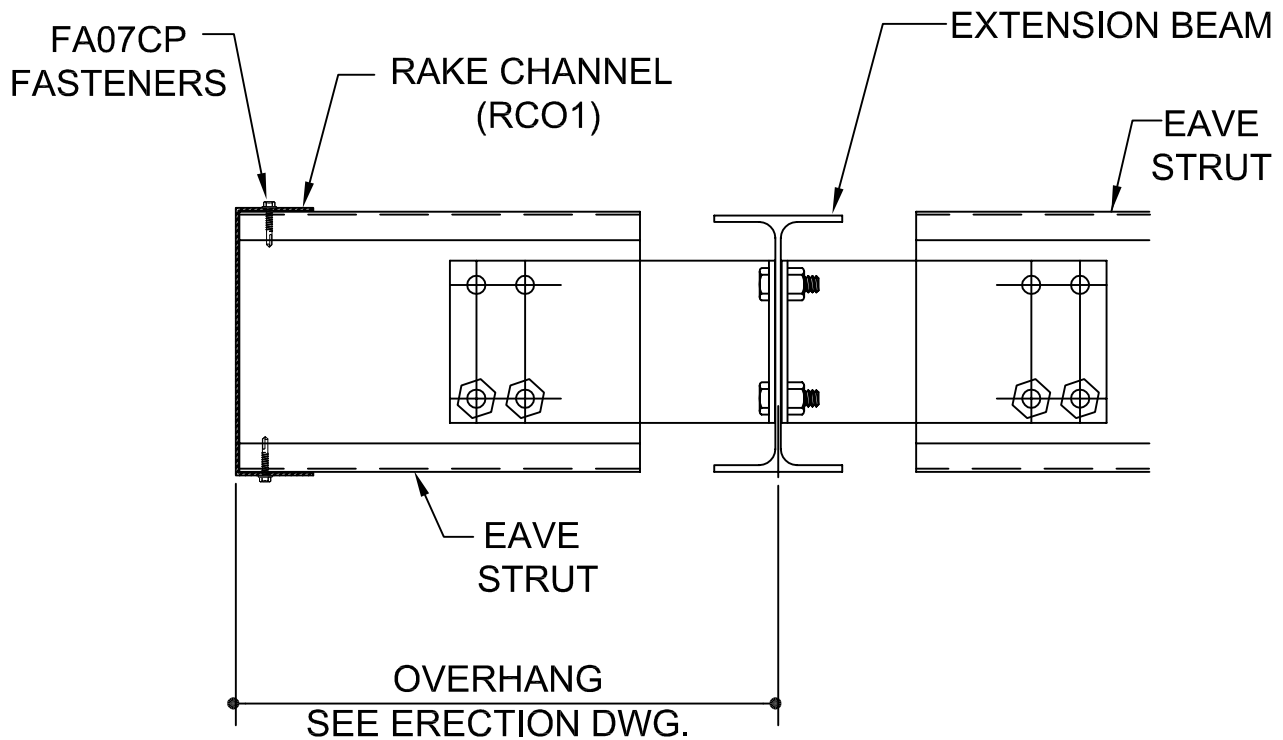


AN0070 - Eave Extension at Endwall Steel Line Eave Strut
AN0071 - Low Eave Ext. Framing w/ Rake Channel Plan View
AN0072 - High Eave Ext. Framing w/ Rake Channel Plan View
AN0135 - Low Eave Ext. Frmg. High Strut
AN0205 - High Eave Ext. Framing High Strut

NOTE: RAKE CHANNEL (RC01) SHOULD RUN FROM EAVE EXTENSION EAVE CHANNEL TO THE FIRST PURLIN UP FROM BUILDING STEEL LINE. RAKE CHANNEL IS THERE TO SUPPORT THE SHORT EAVE STRUT AT BUILDING STEEL LINE OR SHORT PURLIN.

**AN0070K**

**EAVE EXTENSION FRAMING @ ENDWALL
BUILDING STEEL LINE EAVE STRUT**



**KIRBY
BUILDING
SYSTEMS**

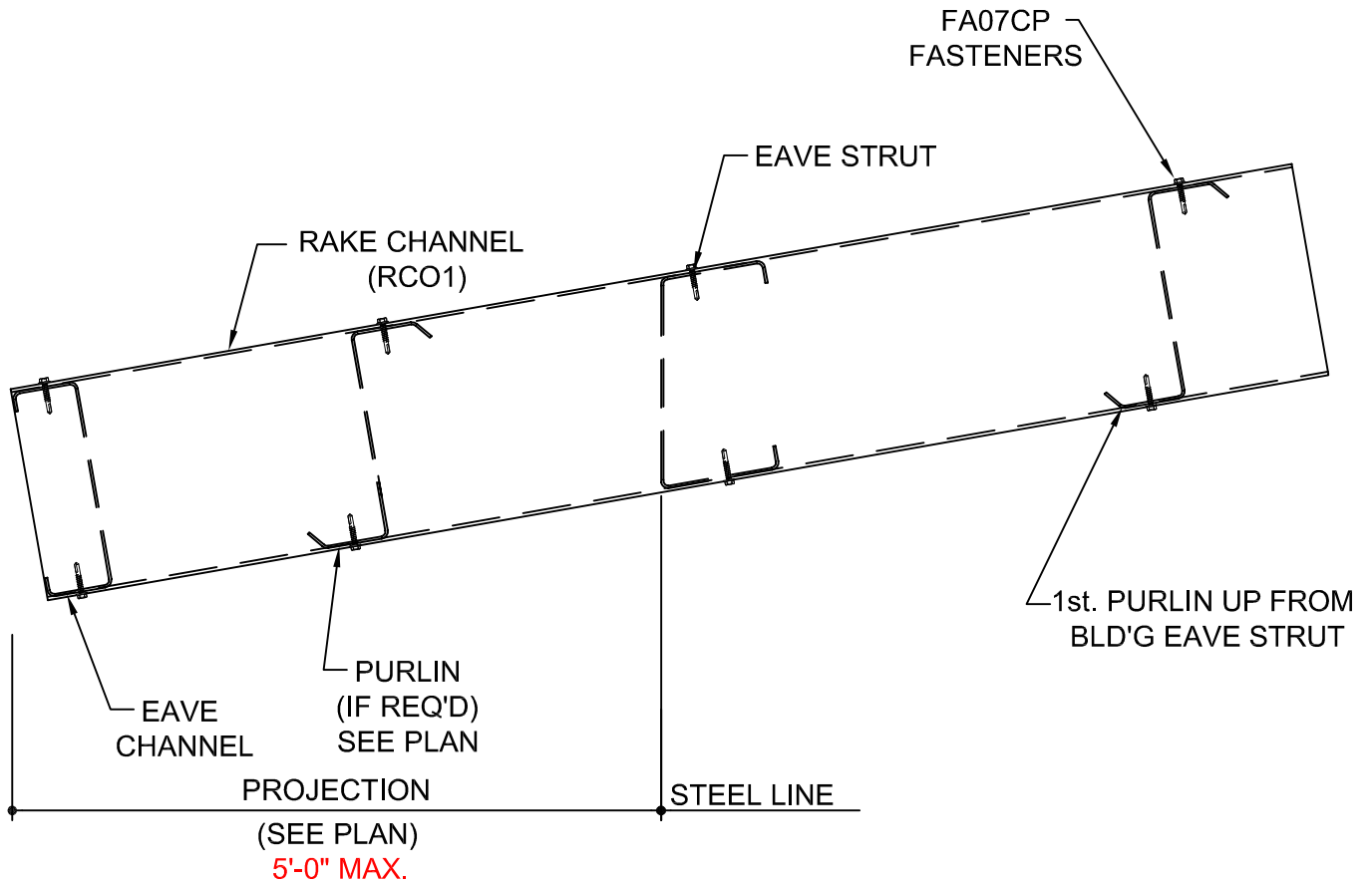
A NUCOR COMPANY

BETTER SOLUTIONS. BETTER BUILDINGS.

PREPARED BY: IJB

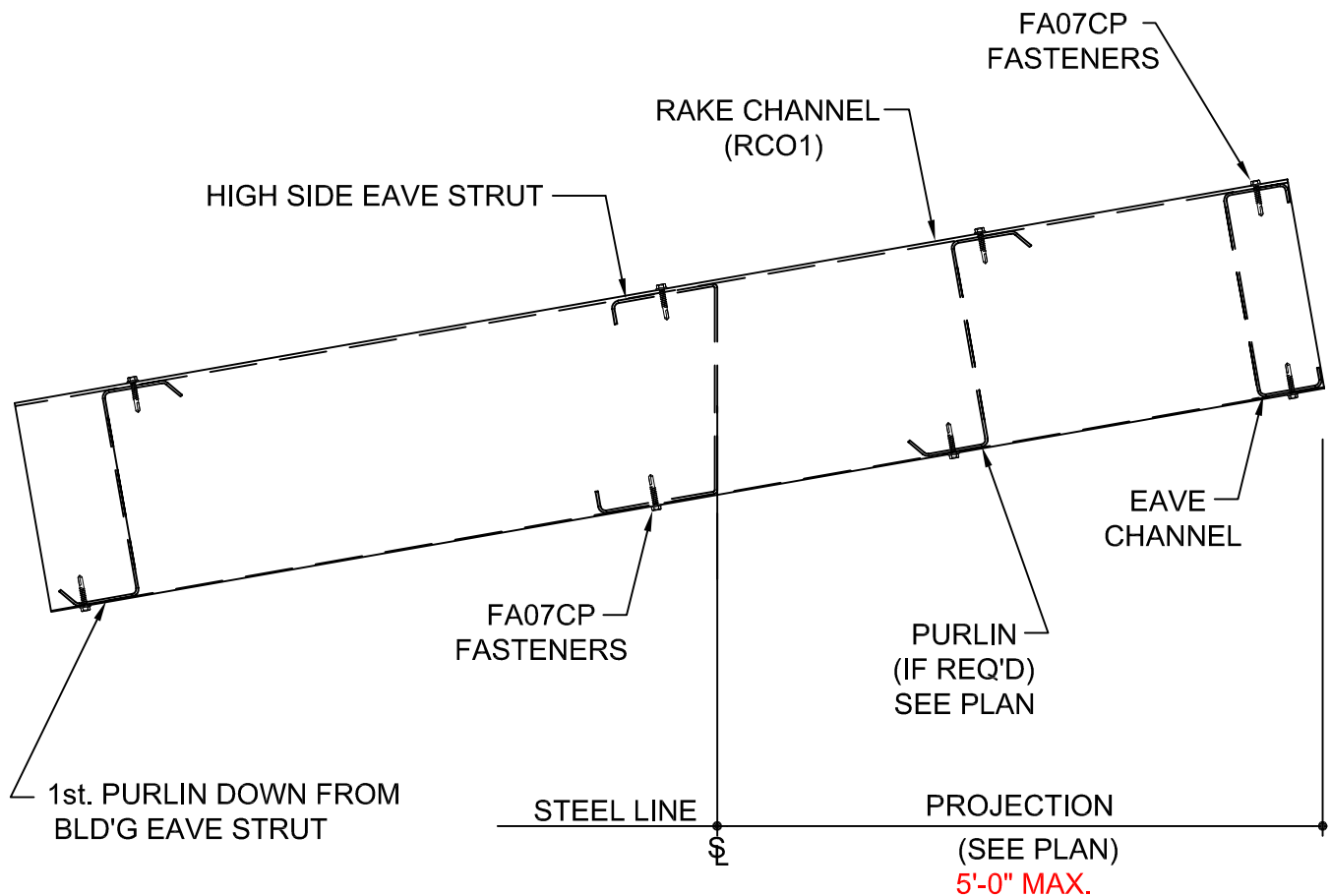
DATE: 6-21-18

AN0070



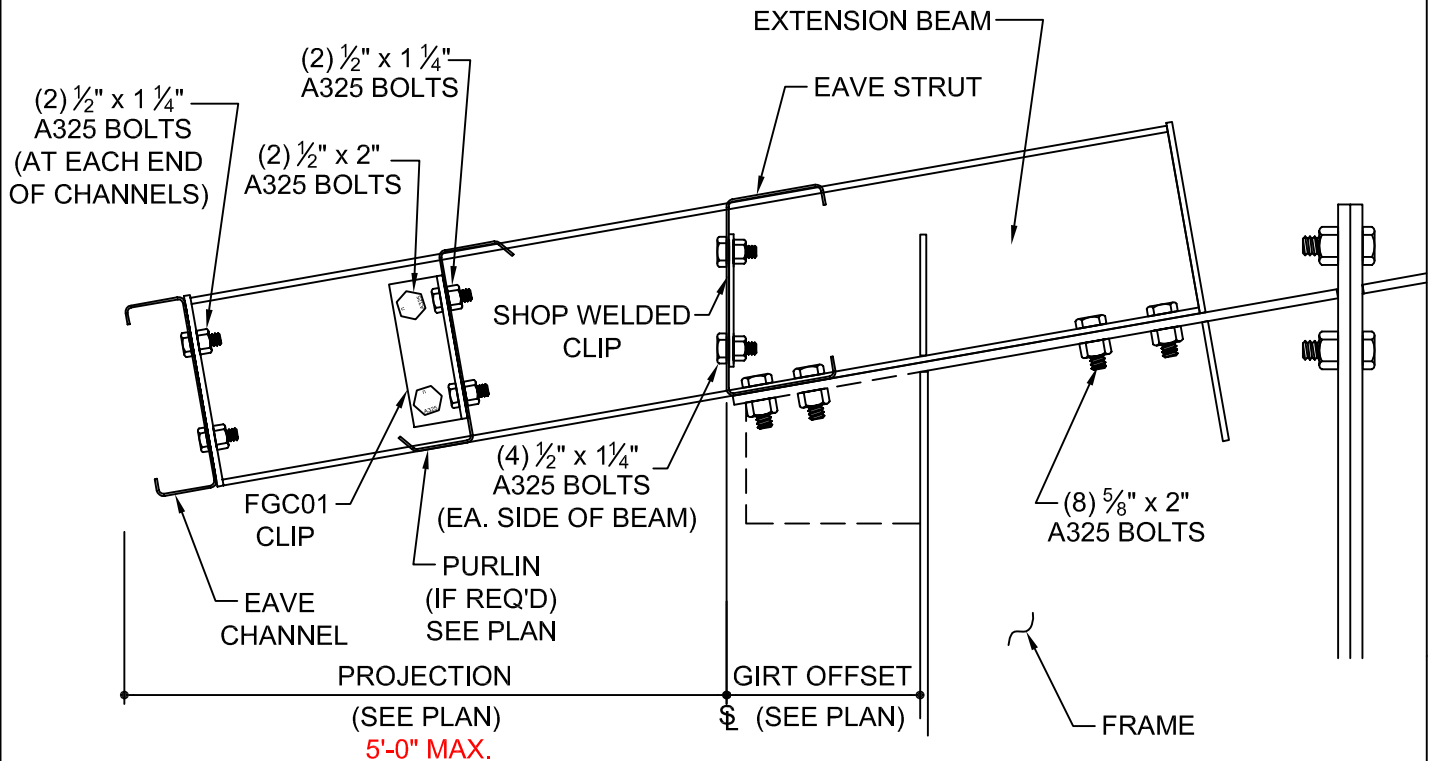
AN0071K

LOW EAVE EXTENSION FRAMING
WITH RAKE CHANNEL PLAN VIEW



AN0072K

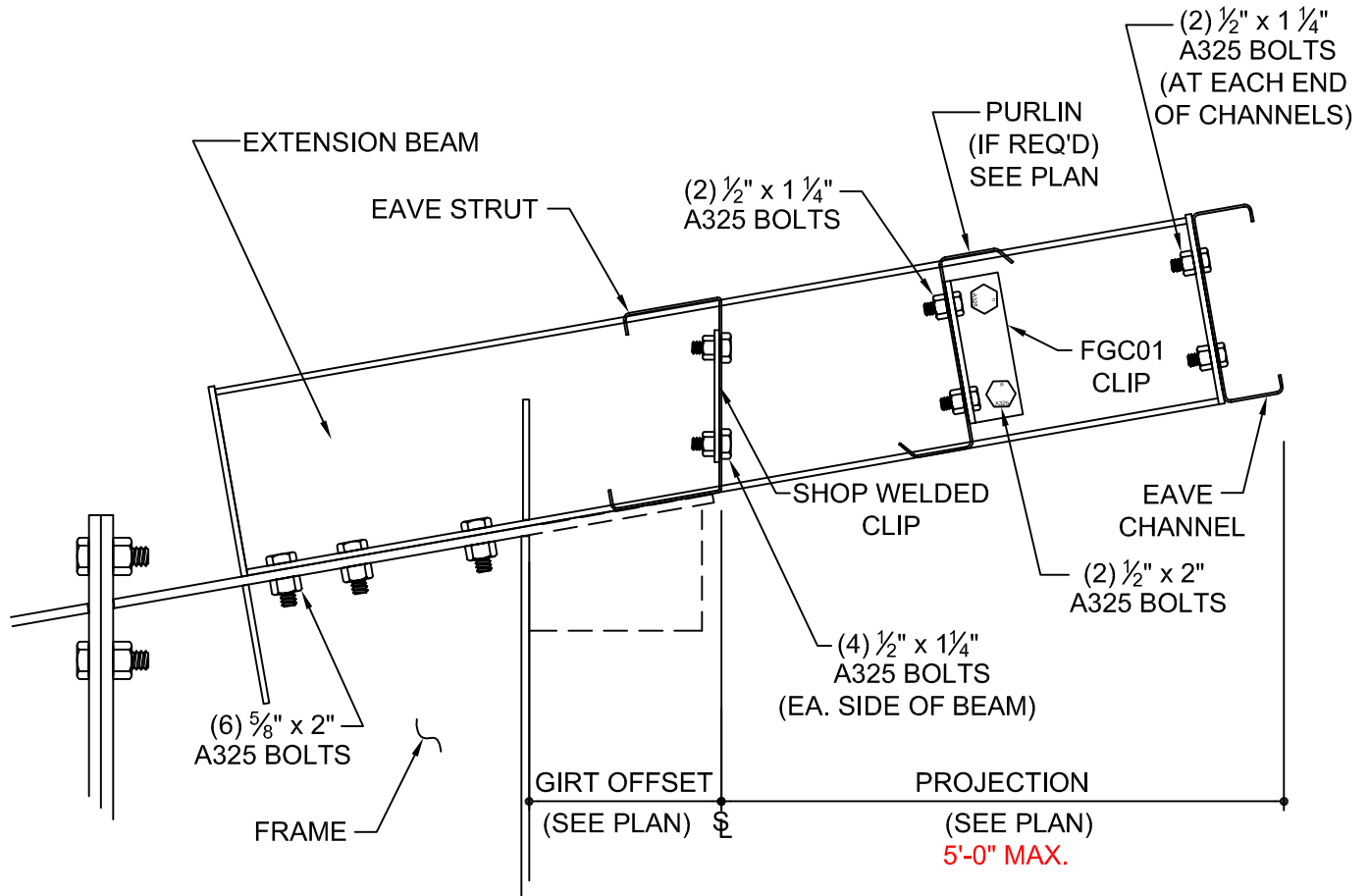
HIGH EAVE EXTENSION FRAMING
WITH RAKE CHANNEL PLAN VIEW



**THIS DETAIL WILL BE USED WHEN ADDITIONAL
 REINFORCEMENT IS REQUIRED FOR THE STRUT FORCE IN
 THE EAVE STRUT CONNECTION.
 (i.e. ESC51'S CALLED OUT ON DESIGN)**

AN0135K

LOW EAVE EXTENSION FRAMING
 WITH HIGH STRUT FORCE



**THIS DETAIL WILL BE USED WHEN ADDITIONAL
REINFORCEMENT IS REQUIRED FOR THE STRUT FORCE IN
THE EAVE STRUT CONNECTION.
(i.e. ESC51'S CALLED OUT ON DESIGN)**

AN0205~~K~~

**HIGH EAVE EXTENSION FRAMING
WITH HIGH STRUT FORCE**