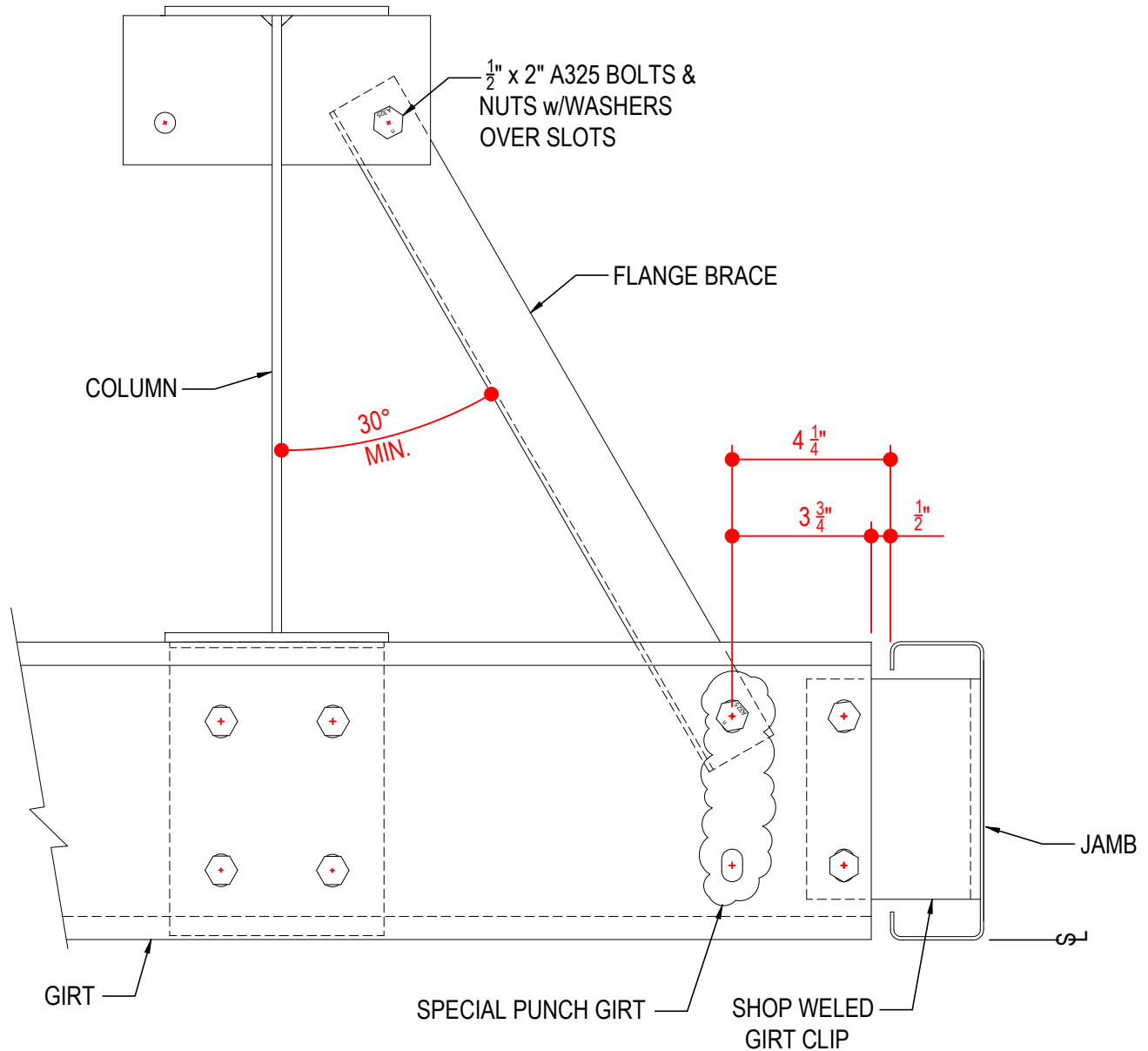


AG3012 - FB Attachment at Door Jamb

AG3132 - FB Attachment w/ LNR, KRP, GHR or KW Liner

AG3135 - FB Attachment w/ Vinyl Liner

## AG3012 - FLANGE BRACE ATTACHMENT AT DOOR JAMB



## FLANGE BRACE ATTACHMENT @ DOOR JAMB

FLANGE BRACE TO DOOR JAMB

NOTE: USE 1/2" X 1 1/4" A307 BOLTS 7 NUTS

REFERENCE A00010 FOR WASHER REQUIREMENTS

**AG3012**

### Detailer Notes:

- 1) COLUMN TO GIRT CLIP SHOP WELDED. 8"= PCU01, 9 1/2"= GCB62, 12"= GCB12
- 2) JAMB TO GIRT CLIP SHOP WELDED. 8"/9 1/2"= FOC94, 12"= FOC95

### AG3132 - FLANGE BRACE ATTACHMENT WITH LINER PANEL

#### ERECTOR NOTES:

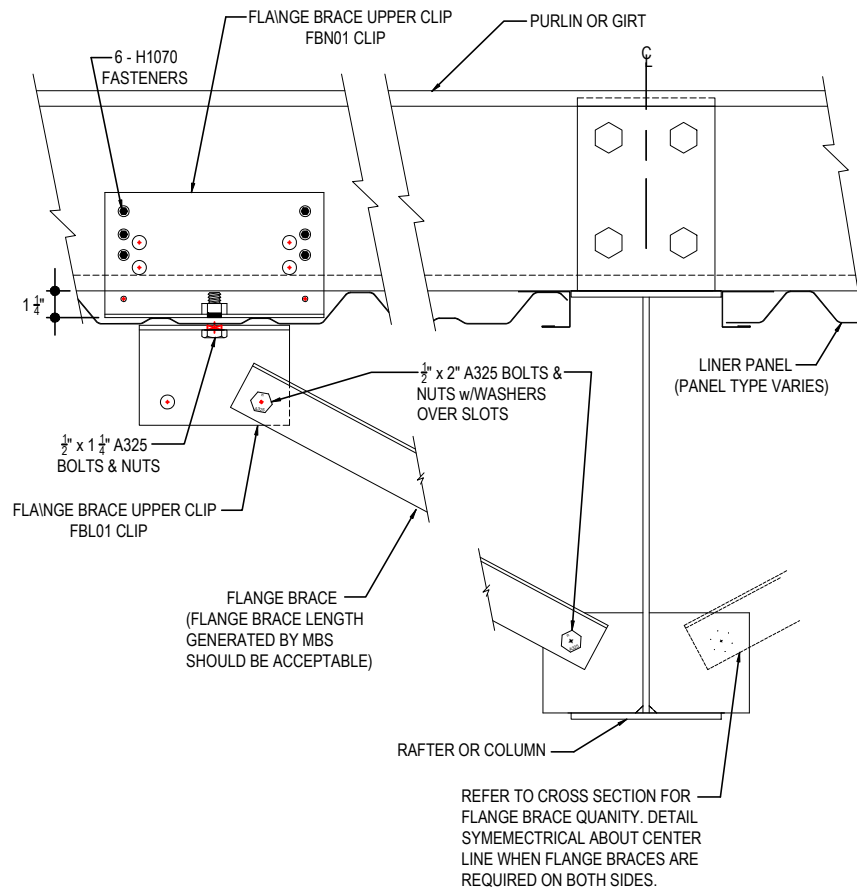
\* INSTALL FLANGE BRACE AND CLIPS DURING ERECTION OF THE STRUCTURE.

\* TEMPORARILY REMOVE 'FBL01' CLIP DURING ERECTION OF LINER PANEL.

\* RECORD THE LOCATION OF THE CENTER OF THE NUT IN THE FBN01 CLIPS.

\* DRILL A 3/4" DIA HOLE IN LINER PANEL AT EACH FBN01 NUT LOCATION BEFORE INSTALLATION.

\* AFTER LINER PANEL IS INSTALLED, RE-ATTACH THE FLANGE BRACES AND FBL01 CLIPS. CUT OR FLATTEN ANY MAJOR PANEL RIBS THAT INTERFERE WITH THE FLANGE BRACE CLIPS.



### FLANGE BRACE ATTACHMENTw/ LINER PANELS

FLANGE BRACE ATTACHMENT w/LNR, KWP OR KW LINER PNL.  
REFERENCE A00010 FOR WASHER REQUIREMENTS

**AG3132**

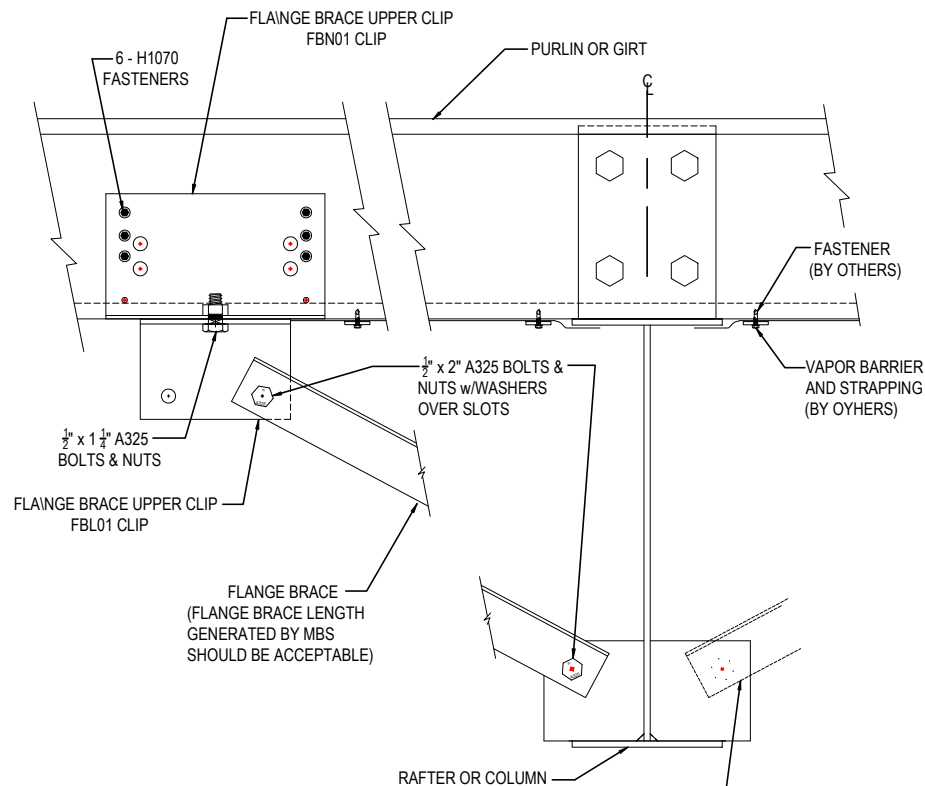
#### Detailer Notes:

1) N/A

## AG3135 - FLANGE BRACE ATTACHMENT W/ VINYL INSULATION

### ERECTOR NOTES:

- \* INSTALL FLANGE BRACE AND CLIPS DURING ERECTION OF THE STRUCTURE.
- \* TEMPORARILY REMOVE 'FBL01' CLIP DURING ERECTION OF VAPOR BARRIER.
- \* LOCATE NUT IN FBN01 THROUGH VAPOR BARRIER AND CUT HOLE.
- \* REINSTALL FBL01 CLIP AND FLANGE BRACE.



### WARNING:

WHEN LAP = 3'-6 3/4" OR LAP = 4'-0 3/4" THE FBN01 MAY FOUL WITH THE LAP BOLTS.

CHECK FOR THIS PROBLEM AND CHANGE THE FLANGE BRACE OFFSET IF NECESSARY.

REFER TO CROSS SECTION FOR FLANGE BRACE QUANTITY. DETAIL SYMMETRICAL ABOUT CENTER LINE WHEN FLANGE BRACES ARE REQUIRED ON BOTH SIDES.

## FLANGE BRACE w/VINYL LINER INSULATION

FLANGE BRACE ATTACHMENT w/VINYL INSULATION  
REFERENCE A00010 FOR WASHER REQUIREMENTS

AG3135

### Detailer Notes:

- 1) N/A