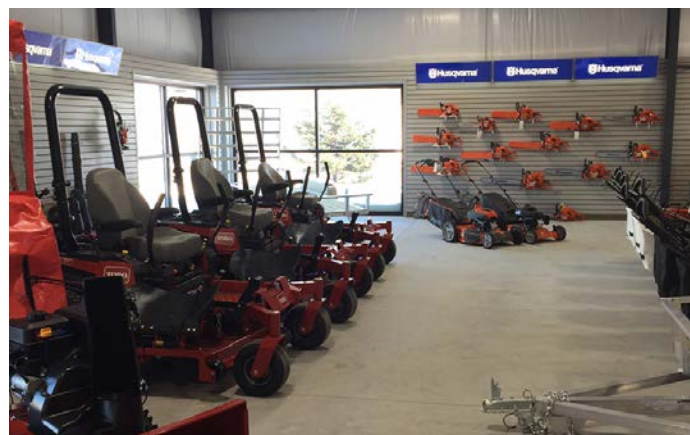


Evergreen Power



LOCATION

Little Chute, WI

SIZE

14,000 sf

ROOF SYSTEM

KirbyLOK Mechanical Seamed Roof

WALL SYSTEM

Kirby Wall

Evergreen Power is a dealer of a wide range of small engine and outdoor lawn equipment and service shop. This project consisted of a new 14,000 sq. ft. commercial building that included retail, repair and storage space. The building features two drive in bays, a storage bay, a drive thru canopy, and exterior natural stone masonry facing.