

INSULATED WALL PANEL

Self-Drilling Fasteners

DP3 CONCEALOR™ Pancake Head Insulated Panel Self-Drilling Fastener

As with everything else in not only our Insulated Panel Program but other aspects of our company we feel it is important to sweat the small details. Not that fasteners are small details as they must be designed to hold everything together – for a very long period of time.

These fasteners are used for through fastening where the concealed clip isn't applicable such as corners and framed opening jambs where field cut panels are necessary. These fasteners have been carefully selected to work specifically with metal building structures.

The DP3 Pancake Head fasteners we ship with Insulated Panel orders are made from heat treated case hardened, SAE J-78 steel and coated with a TRI-SEAL™ Long-Life Coating which passes a 1,000 hour salt spray test per ASTM B117.

It is not necessary to predrill holes with this fastener, saving time and labor.



Screwgun: 2,500 RPM Max



Drive: #3 Square Power Bit

2" Thick Panel

1/4 - 14 x 3" DP3 PANCAKE HEAD



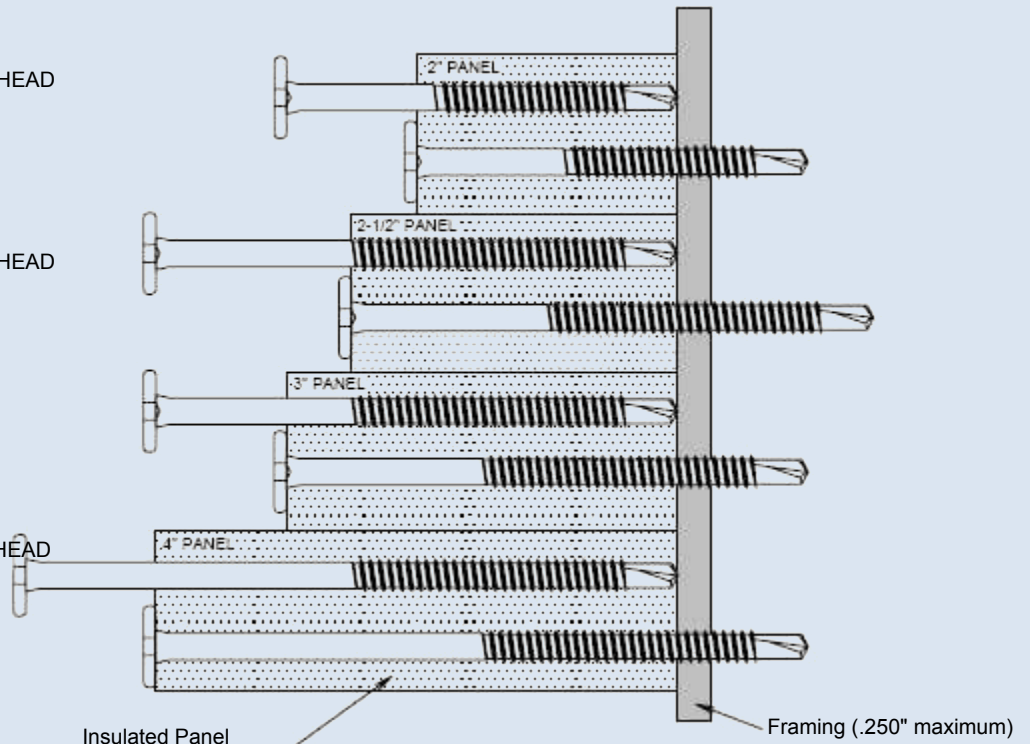
2-1/2" and 3" Thick Panel

1/4 - 14 x 3" DP3 PANCAKE HEAD



4" Thick Panel

1/4 - 14 x 5" DP3 PANCAKE HEAD



INSULATED WALL PANEL

Self-Drilling Fasteners

TRI-SEAL™ Long-Life Coating

TRI-SEAL™ Long-Life Coating is a high performance dip spin finish developed to minimize corrosion when used in exterior building applications. It consists of three layers:

Top Layer

Baked Ceramic Surface Coating Layer

Corrosive elements are intercepted by the strong paint film made of ceramic materials

Middle Layer

Chemical Conversion Coating Layer

Rust proof performance is improved as the chemical conversion inactivates the zinc plated surface and creates a tight adhesion between the chemically converted layer and the paint layer.

Metallic Zinc Layer

The steel substrate is protected from corrosion by the self-sacrificial galvanic effect of the zinc coating.

The distinguishing feature of TRI-SEAL™ is the tight joining of the baked ceramic surface coating and the chemical conversion film. These two layers are bonded together through chemical reactions, and this unique method of combining layers result in a rigid combination of the coating films which provide:

- Excellent resistance against gas, weather, and other types of corrosion factors, including salt water.
- An ability to minimize the effect of scratches on the protection coating

Performance

Test Items	Test Methods	Test Results
Hardness	Peeling test by pencil hardness	Over 4H
Adhesion	Peeling test by adhesive tape on cross scribed test piece in 1 mm width	Nothing abnormal
Acid Resistance	Immersion in 5% sulfuric acid solution for 24 hours	Nothing abnormal
Alkali Resistance	Immersion in 5% sodium hydroxide solution for 72 hours	Nothing abnormal
Heat Resistance	Exposure to 250 C (482 F) heat for an hour	Nothing abnormal
Accelerated Weathering	Sunshine weather-0-meter test for 1,000 hours	Free from red rust
Contact Corrosion w/other Metals	Corrosive investigation after Salt Spray Test (JIS Z2371) done comparatively on surface treated steel bolts/nuts tightened on a stainless steel plate	Clearly superior to zinc electro-plating (colored chromate) and hot dip galvanizing

Corrosion Testing
Salt Spray: 1, 000 hrs.
Per ASTM B117
Kesternich: 30 cycles.
Per DIN 50018

CONCEALOR™ TRI-Seal™ are trademarks of Triangle Fastener Corporation